

LEA Name : Pottstown SD  
Address : 230 Beech St  
Pottstown , PA 19464

County : Montgomery  
AUN Number : 123466403  
LEA Type : SD

## Annual Financial Report Accuracy Certification Statement

For Fiscal Year Ending  
**6/30/2020**

Pennsylvania Department of Education

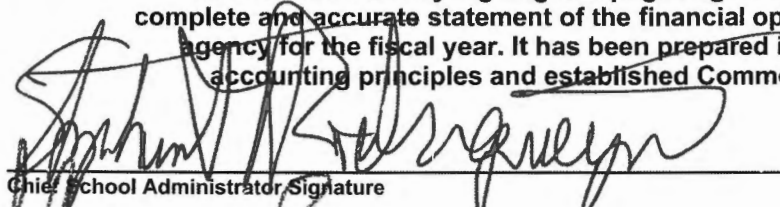
&

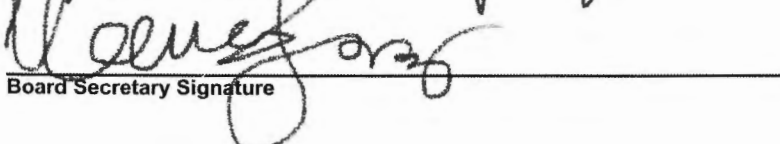
Office of Comptroller Operations

PDE-2056: Intermediate Unit

PDE-2057: School District, AVTS/CTC, Charter School,  
and Special Program Jointure

**CERTIFICATION: By signing this page I agree that the electronic data submitted is a complete and accurate statement of the financial operations and status of the local education agency for the fiscal year. It has been prepared in accordance with generally accepted accounting principles and established Commonwealth of PA reporting guidelines.**

  
Chief School Administrator Signature

  
Board Secretary Signature

  
Date

  
Date

Maureen K Jampo

Contact Person

mjampo@pottstownk12.org

Contact Person E-mail Address

(484)942-2902

Ext :

Contact Person Telephone Number

(610)326-6540

Contact Person Fax Number

**Audit Certification**  
**Annual Financial Report:**  
For Fiscal Year Ending **6/30/2020**  
**(Pursuant to PA School Code Section 218(b))**

LEA Name : Pottstown SD  
AUN Number : 123466403  
County : Montgomery

<b>Audit Certification Due:</b> 12/31/2020
---

**This certification is applicable to the Annual Financial Report data submitted through the Consolidated Financial Reporting System (CFRS).**

CERTIFICATION: By signing this page I agree that the financial statements of the school have been properly audited as noted above pursuant to Article XXIV, and in the auditor's professional opinion, the Annual Financial Report (PDE-2057) submitted through CFRS is materially consistent with the audited financial statements.

Chief School Administrator

Signature

Date

Board Secretary

Signature

Date

Maureen K Jampo

Contact Person

mjampo@pottstownk12.org

Contact Person E-mail Address

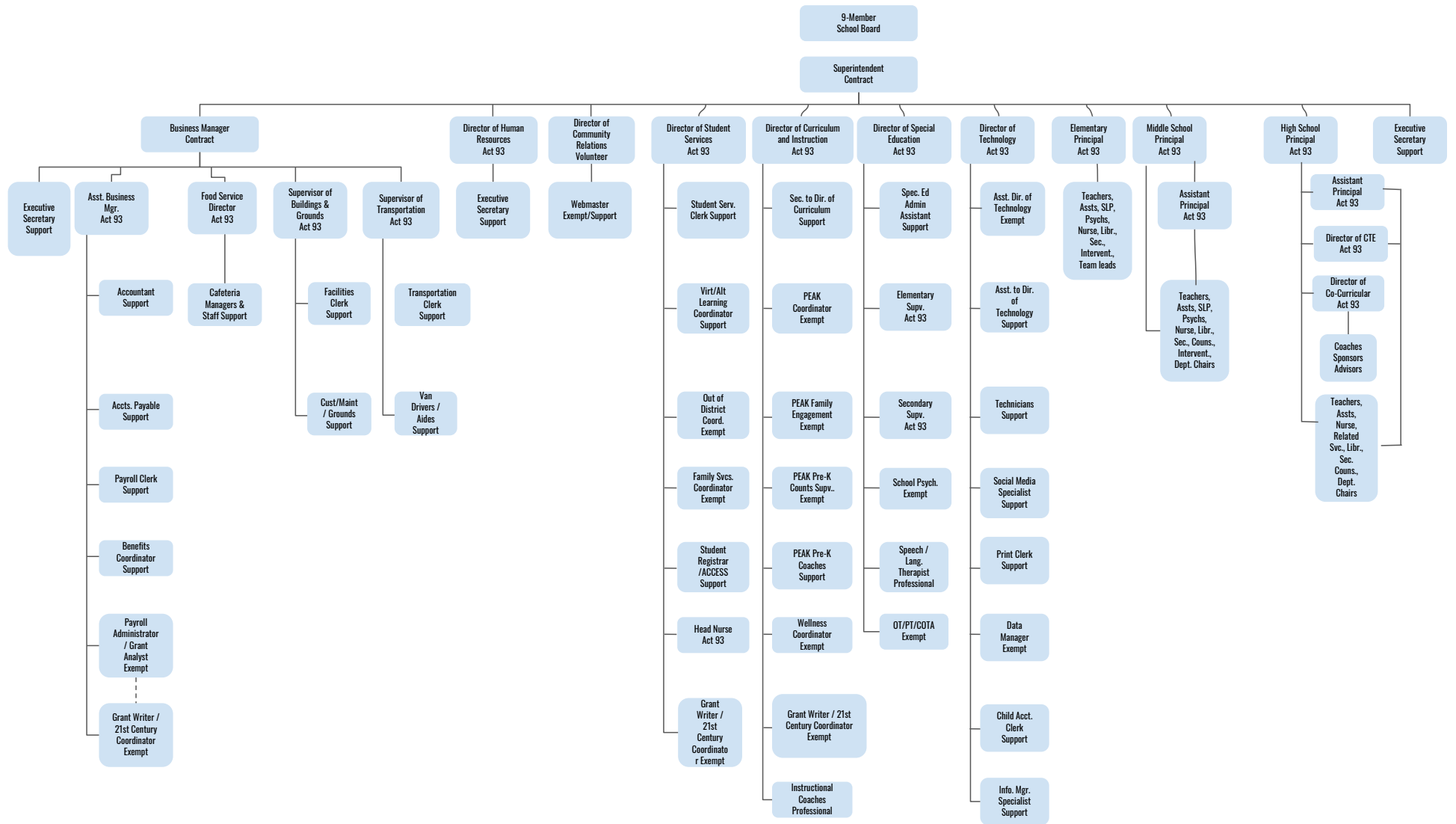
(484)942-2902

Ext :

Contact Person Telephone Number

(610)326-6540

Contact Person Fax Number



Pottstown School District - March 15, 2018



Book: Policy Manual  
Section: 600 Finances  
Title: Capital Assets / GASB Statement 34  
Code: 622  
Status: For Board Approval  
Adopted: March 15, 2018  
Last revised: December 17, 2020

## **Purpose**

The Board recognizes the need to implement the required accounting and financial reporting standards stipulated by the Pennsylvania Department of Education.

The primary objectives of implementing the Governmental Accounting Standards Board (GASB) Statement 34 are to assure compliance with state requirements, and properly account for both the financial and economic resources of the district.

## **Definition**

This policy applies to the district's acquisition and depreciation of capital assets. **Capital assets** include land, improvements to land, easements, buildings and building additions, building improvements, furniture, fixtures and equipment, equipment under lease, vehicles, works of art and historical treasures, construction-in-progress, and infrastructure. **Capital assets** are tangible assets used in operations and have initial useful lives extending beyond a single reporting period. Equipment will not change its original shape, appearance or character with use and it can be expected to last more than one (1) year with reasonable care and maintenance.



## **Authority**

Participation of the school district in any such activity shall be in accordance with Board policy.[\[1\]](#)[\[2\]](#)

## **Delegation of Responsibility**

The responsibility to coordinate the compilation and preparation of all information necessary to implement this policy is delegated to the Superintendent, Business Administrator or their designee.

They should be responsible for implementing the necessary procedures to establish and maintain a capital asset inventory, including depreciation schedules. The basis for depreciation, including groups of assets and useful lives, shall be in writing and submitted for review to the Board.

The Superintendent or designee shall prepare the required Management Discussion and Analysis (MD&A). MD&A shall be in the form required by GASB Statement 34.

The district's independent auditors shall review the MD&A, in accordance with SAS No. 52, "Required Supplementary Information".

## **Guidelines**

### **Capital Asset Addition Overview**

Purchased capital assets greater than \$5,000 should be recorded at historical/original cost. The cost of a capital asset should include capitalized interest and ancillary charges necessary to place the asset into its intended location and condition for use. Ancillary charges include costs that are directly attributable to asset acquisition, such as freight and transportation charges, site preparation costs, and professional fees.

Capital assets should be depreciated over their useful lives as

determined for each asset class. Land, and some land improvements, are considered inexhaustible, and are therefore not subject to depreciation.

### Donations

Donated capital assets must be reported at fair market value plus ancillary charges, if any, at the time of donation. Donated assets are depreciated over their useful lives, as determined for each asset class. If determining historical costs is not practical due to inadequate records, reporting should be based on estimates of fair market value at the date of donation.

### Depreciation

Depreciation is required for the district's capital assets. Depreciation is calculated using the straight line method. The district calculates depreciation on all capital assets reported in the district financial statements other than land and construction-in-progress.

### Disposals

**Sale of Capital Assets** - When capital assets are sold, calculation of gain or loss on disposal is required. The calculation is based upon the amount of proceeds received less the net book value (cost less accumulated depreciation taken on the asset).

**Trade-ins** – The value given for a trade is part of the cost of the newly acquired asset. The costs and accumulated depreciation of the traded-in asset must be removed from the books. Any gain or loss resulting from the disposition of the asset will be recognized as a gain or loss on disposal.

### Assets Acquired by Capital Lease

Assets acquired by capital lease are recorded at the net present value of the future minimum lease payments. A corresponding liability is established at this time. Assets acquired under the terms of capital leases are depreciated over the useful lives designated for the asset class.

### Legal

1. 24 P.S. 218

2. 24 P.S. 613

Governmental Accounting Standards Board, Statement No. 34

Last Modified by Joanne Rhoads on April 18, 2018

<u>Val Number</u>	<u>Description</u>	<u>Justification</u>
15000	NAP - Fund 51: Total Net Position must equal REP - Fund51: Net Position - End of Year  Total Net Position (NAP), Fund 51: \$-355,604.00 Net Position, End of Yr (REP), Fund 51: \$-226,573.00	Difference of \$129,031 is beginning balance for OPEB liability in 2017-18 as a result of the implementation of GASB 75 in relation to Other Post Employment Benefits.
15020	NAP: Total Net Position must equal REP: Net Position - End of Year  Total Net Position (NAP), Tot:\$-355,604.00 Net Position, End of Yr (REP), Tot: \$-226,573.00	Difference of \$129,031 is beginning balance for OPEB liability in 2017-18 as a result of the implementation of GASB 75 in relation to Other Post Employment Benefits.
42420	Expenditure Detail: Total current year2700-513 expenditure varies from prior year by 10%. Correct the data or enter a justification.  2700-513, AFR Exp Detail: \$1,547,374.34 2700-513, PY AFR Amount: \$2,296,464.52	Pottstown Schools shut down on March 13, 2020 due to the pandemic. Bussing services for regular education students were discontinued. Student transportation expenses were significantly reduced for the rest of the school year.
50160	SOIN: All Governmental Fund General Obligation Bonds must include an amount for Interest Paid during Fiscal Year. Correct data or enter a justification.	GOB Series of 2020 was issued June 25, 2020. No interest was incurred as of June 30, 2020.

LEA : 123466403     Pottstown SD

Printed 1/4/2021 2:14:49 PM

Amounts Expressed in Whole Dollars		<u>General Fund</u> <u>(10)</u>	<u>Student Sponsored</u> <u>Activity Fund</u> <u>(21)</u>	<u>Public Purpose Trust</u> <u>(27)</u>	<u>Other Compt Approved</u> <u>(28)</u>	<u>Athletic / Activity</u> <u>(29)</u>
<b>Assets And Deferred Outflows Of Resources</b>						
<b>Assets</b>						
0100	Cash and Cash Equivalents	13,453,492				122,669
0110	Investments	6,000,000				
0120	Taxes Receivable	2,948,780				
0130	Due From Other Funds	105,448				
0141	Due From Other Governments	3,827				
0142	State Revenue Receivable	3,264,543				
0143	Federal Revenue Receivable	1,101,592				
0145	Other Intergovernmental Revenue Receivable					
0146	Due from Primary Government					
0147	Due from Component Unit					
0150	Other Receivables	79,385				
0170	Inventories	10,840				
0180	Prepaid Expenses (Expenditures)	64,254				
0190	Other Current Assets					
<b>Total Assets</b>		<b>\$27,032,161</b>				<b>\$122,669</b>
0910	Deferred Outflows of Resources					
<b>Total Assets And Deferred Outflows Of Resources</b>		<b>\$27,032,161</b>				<b>\$122,669</b>

LEA : 123466403     Pottstown SD

Printed 1/4/2021 2:14:49 PM

Amounts Expressed in Whole Dollars		<u>Capital Reserve (690.</u> <u>1850)</u> <u>(31)</u>	<u>Capital Reserve (1431)</u> <u>(32)</u>	<u>Other Capital Projects</u> <u>Fund</u> <u>(39)</u>	<u>Debt Service</u> <u>(40)</u>	<u>Permanent</u> <u>(90)</u>
<b>Assets And Deferred Outflows Of Resources</b>						
<b>Assets</b>						
0100	Cash and Cash Equivalents			774,666	8,602	
0110	Investments					
0120	Taxes Receivable					
0130	Due From Other Funds			1,414,845		
0141	Due From Other Governments					
0142	State Revenue Receivable					
0143	Federal Revenue Receivable					
0145	Other Intergovernmental Revenue Receivable					
0146	Due from Primary Government					
0147	Due from Component Unit					
0150	Other Receivables					
0170	Inventories					
0180	Prepaid Expenses (Expenditures)					
0190	Other Current Assets					
<b>Total Assets</b>				<b>\$2,189,511</b>	<b>\$8,602</b>	
0910	Deferred Outflows of Resources					
<b>Total Assets And Deferred Outflows Of Resources</b>				<b>\$2,189,511</b>	<b>\$8,602</b>	

LEA : 123466403     Pottstown SD

Printed 1/4/2021 2:14:49 PM

Amounts Expressed in Whole Dollars		<u>Total Governmental</u> <u>Funds</u>
<b>Assets And Deferred Outflows Of Resources</b>		
<b>Assets</b>		
0100 Cash and Cash Equivalents	14,359,429	
0110 Investments	6,000,000	
0120 Taxes Receivable	2,948,780	
0130 Due From Other Funds	1,520,293	
0141 Due From Other Governments	3,827	
0142 State Revenue Receivable	3,264,543	
0143 Federal Revenue Receivable	1,101,592	
0145 Other Intergovernmental Revenue Receivable		
0146 Due from Primary Government		
0147 Due from Component Unit		
0150 Other Receivables	79,385	
0170 Inventories	10,840	
0180 Prepaid Expenses (Expenditures)	64,254	
0190 Other Current Assets		
<b>Total Assets</b>	<b>\$29,352,943</b>	
0910 Deferred Outflows of Resources		
<b>Total Assets And Deferred Outflows Of Resources</b>	<b>\$29,352,943</b>	

LEA : 123466403 Pottstown SD

Printed 1/4/2021 2:14:49 PM

Amounts Expressed in Whole Dollars	<u>General Fund</u> <u>(10)</u>	<u>Student Sponsored</u> <u>Activity Fund</u> <u>(21)</u>	<u>Public Purpose Trust</u> <u>(27)</u>	<u>Other Compt Approved</u> <u>(28)</u>	<u>Athletic / Activity</u> <u>(29)</u>
<b>Liabilities And Deferred Inflows Of Resources And Fund Balances</b>					
<b>Liabilities</b>					
0400 Due to Other Funds	1,895,968				
0411 Due to Other Governments					
0412 Due to Primary Government					
0413 Due to Component Unit					
0420 Accounts Payable	1,805,967				456
0430 Contracts Payable					
0440 Current Portion of Long-Term Debt					
0450 Short-Term Payables					
0461 Accrued Salaries and Benefits	3,845,584				
0462 Payroll Deductions and Withholding	2,558,225				
0480 Unearned Revenues	17,439				
0490 Other Current Liabilities	7,920				
<b>Total Liabilities</b>	<b>\$10,131,103</b>				<b>\$456</b>
0950 Deferred Inflows of Resources	2,622,032				
<b>Fund Balances</b>					
0810 Nonspendable Fund Balance					
0820 Restricted Fund Balance					122,213
0830 Committed Fund Balance	3,299,409				
0840 Assigned Fund Balance	502,164				
0850 Unassigned Fund Balance	10,477,453				
<b>Total Fund Balances</b>	<b>\$14,279,026</b>				<b>\$122,213</b>
<b>Total Liabilities, Deferred Inflows Of Resources And Fund Balances</b>	<b>\$27,032,161</b>				<b>\$122,669</b>



LEA : 123466403     Pottstown SD

Printed 1/4/2021 2:14:49 PM

Amounts Expressed in Whole Dollars		<u>Capital Reserve (690.</u> <u>1850)</u> <u>(31)</u>	<u>Capital Reserve (1431)</u> <u>(32)</u>	<u>Other Capital Projects</u> <u>Fund</u> <u>(39)</u>	<u>Debt Service</u> <u>(40)</u>	<u>Permanent</u> <u>(90)</u>
<b>Liabilities And Deferred Inflows Of Resources And Fund Balances</b>						
<b>Liabilities</b>						
0400	Due to Other Funds					
0411	Due to Other Governments					
0412	Due to Primary Government					
0413	Due to Component Unit					
0420	Accounts Payable					
0430	Contracts Payable					
0440	Current Portion of Long-Term Debt					
0450	Short-Term Payables					
0461	Accrued Salaries and Benefits					
0462	Payroll Deductions and Withholding					
0480	Unearned Revenues					
0490	Other Current Liabilities					
<b>Total Liabilities</b>						
0950	Deferred Inflows of Resources					
<b>Fund Balances</b>						
0810	Nonspendable Fund Balance					
0820	Restricted Fund Balance			2,189,511	8,602	
0830	Committed Fund Balance					
0840	Assigned Fund Balance					
0850	Unassigned Fund Balance					
<b>Total Fund Balances</b>				<b>\$2,189,511</b>	<b>\$8,602</b>	
<b>Total Liabilities, Deferred Inflows Of Resources And Fund Balances</b>				<b>\$2,189,511</b>	<b>\$8,602</b>	

LEA : 123466403     Pottstown SD

Printed 1/4/2021 2:14:49 PM

Amounts Expressed in Whole Dollars		<u>Total Governmental</u> <u>Funds</u>
<b>Liabilities And Deferred Inflows Of Resources And Fund Balances</b>		
<b>Liabilities</b>		
0400 Due to Other Funds		1,895,968
0411 Due to Other Governments		
0412 Due to Primary Government		
0413 Due to Component Unit		
0420 Accounts Payable		1,806,423
0430 Contracts Payable		
0440 Current Portion of Long-Term Debt		
0450 Short-Term Payables		
0461 Accrued Salaries and Benefits		3,845,584
0462 Payroll Deductions and Withholding		2,558,225
0480 Unearned Revenues		17,439
0490 Other Current Liabilities		7,920
<b>Total Liabilities</b>		<b>\$10,131,559</b>
0950 Deferred Inflows of Resources		2,622,032
<b>Fund Balances</b>		
0810 Nonspendable Fund Balance		
0820 Restricted Fund Balance		2,320,326
0830 Committed Fund Balance		3,299,409
0840 Assigned Fund Balance		502,164
0850 Unassigned Fund Balance		10,477,453
<b>Total Fund Balances</b>		<b>\$16,599,352</b>
<b>Total Liabilities, Deferred Inflows Of Resources And Fund Balances</b>		<b>\$29,352,943</b>

LEA : 123466403     Pottstown SD

Printed 1/4/2021 2:15:10 PM

Amounts Expressed in Whole Dollars	<u>General Fund</u> <u>(10)</u>	<u>Student Sponsored</u> <u>Activity Fund</u> <u>(21)</u>	<u>Public Purpose Trust</u> <u>(27)</u>	<u>Other Compt Approved</u> <u>(28)</u>	<u>Athletic / Activity</u> <u>(29)</u>
<b>Revenues</b>					
6000 Revenue from Local Sources	35,074,208				40,313
7000 Revenue from State Sources	28,234,987				
8000 Revenue from Federal Sources	3,522,299				
<b>Total Revenues</b>	<b>\$66,831,494</b>				<b>\$40,313</b>
<b>Expenditures</b>					
1000 Instruction	39,956,778				
2000 Support Services	18,106,659				
3000 Operation of Non-Instructional Services	900,368				31,010
4000 Facilities Acquisition, Construction and Improvement Services	770,093				
5110 Debt Service	3,655,334				
5130 Refund of Prior Year Revenues / Receipts	55,732				
<b>Total Expenditures</b>	<b>\$63,444,964</b>				<b>\$31,010</b>
<b>Excess (Deficiency) Of Revenues Over Expenditures</b>	<b>\$3,386,530</b>				<b>\$9,303</b>
<b>Other Financing Sources (Uses)</b>					
9110 Face Value of Bonds Issued					
9120 Proceeds from Refunding of Bonds					
9130 Bond Premiums					
9200 Proceeds from Extended-Term Financing					
9300 Interfund Transfers - IN	82,450				
9400 Sale of or Compensation for Loss of Fixed Assets					
9710 Transfers from Component Units					
9720 Transfers from Primary Governments					
9910 Other Financing Sources Not Listed in the 9000 Series					
9990 Insurance Recoveries					
5120 Debt Service – Refunded Bonds					
5150 Bond Discounts					
5200 Interfund Transfers – Out					
5300 Transfers Out to Component Units/Primary Governments					
<b>Total Other Financing Sources (Uses)</b>	<b>\$82,450</b>				

LEA : 123466403     Pottstown SD

Printed 1/4/2021 2:15:10 PM

Amounts Expressed in Whole Dollars	<u>Capital Reserve (690.1850)</u> <u>(31)</u>	<u>Capital Reserve (1431)</u> <u>(32)</u>	<u>Other Capital Projects</u> <u>Fund</u> <u>(39)</u>	<u>Debt Service</u> <u>(40)</u>	<u>Permanent</u> <u>(90)</u>
<b>Revenues</b>					
6000 Revenue from Local Sources			30,133	2	
7000 Revenue from State Sources					
8000 Revenue from Federal Sources					
<b>Total Revenues</b>			<b>\$30,133</b>	<b>\$2</b>	
<b>Expenditures</b>					
1000 Instruction					
2000 Support Services				455,002	
3000 Operation of Non-Instructional Services					
4000 Facilities Acquisition, Construction and Improvement Services					
5110 Debt Service				36,377	
5130 Refund of Prior Year Revenues / Receipts					
<b>Total Expenditures</b>				<b>\$491,379</b>	
<b>Excess (Deficiency) Of Revenues Over Expenditures</b>			<b>\$30,133</b>	<b>(\$491,377)</b>	
<b>Other Financing Sources (Uses)</b>					
9110 Face Value of Bonds Issued					
9120 Proceeds from Refunding of Bonds				19,445,000	
9130 Bond Premiums				931,992	
9200 Proceeds from Extended-Term Financing					
9300 Interfund Transfers - IN					
9400 Sale of or Compensation for Loss of Fixed Assets					
9710 Transfers from Component Units					
9720 Transfers from Primary Governments					
9910 Other Financing Sources Not Listed in the 9000 Series					
9990 Insurance Recoveries					
5120 Debt Service – Refunded Bonds				19,892,105	
5150 Bond Discounts					
5200 Interfund Transfers – Out					
5300 Transfers Out to Component Units/Primary Governments					
<b>Total Other Financing Sources (Uses)</b>				<b>\$484,887</b>	

Amounts Expressed in Whole Dollars		<u>Total Governmental Funds</u>
<b>Revenues</b>		
6000	Revenue from Local Sources	35,144,656
7000	Revenue from State Sources	28,234,987
8000	Revenue from Federal Sources	3,522,299
<b>Total Revenues</b>		<b>\$66,901,942</b>
<b>Expenditures</b>		
1000	Instruction	39,956,778
2000	Support Services	18,561,661
3000	Operation of Non-Instructional Services	931,378
4000	Facilities Acquisition, Construction and Improvement Services	770,093
5110	Debt Service	3,691,711
5130	Refund of Prior Year Revenues / Receipts	55,732
<b>Total Expenditures</b>		<b>\$63,967,353</b>
<b>Excess (Deficiency) Of Revenues Over Expenditures</b>		<b>\$2,934,589</b>
<b>Other Financing Sources (Uses)</b>		
9110	Face Value of Bonds Issued	
9120	Proceeds from Refunding of Bonds	19,445,000
9130	Bond Premiums	931,992
9200	Proceeds from Extended-Term Financing	
9300	Interfund Transfers - IN	82,450
9400	Sale of or Compensation for Loss of Fixed Assets	
9710	Transfers from Component Units	
9720	Transfers from Primary Governments	
9910	Other Financing Sources Not Listed in the 9000 Series	
9990	Insurance Recoveries	
5120	Debt Service – Refunded Bonds	19,892,105
5150	Bond Discounts	
5200	Interfund Transfers – Out	
5300	Transfers Out to Component Units/Primary Governments	
<b>Total Other Financing Sources (Uses)</b>		<b>\$567,337</b>

Amounts Expressed in Whole Dollars		<u>General Fund</u> <u>(10)</u>	<u>Student Sponsored</u> <u>Activity Fund</u> <u>(21)</u>	<u>Public Purpose Trust</u> <u>(27)</u>	<u>Other Compt Approved</u> <u>(28)</u>	<u>Athletic / Activity</u> <u>(29)</u>
<b>Special And Extraordinary Items</b>						
9920 Special Items – Gains						
9930 Extraordinary Items – Gains						
5520 Special Items – Losses						
5530 Extraordinary Items – Losses						
<b>Net Change In Fund Balances</b>		<b>\$3,468,980</b>				<b>\$9,303</b>
<b>Fund Balance</b>						
0001 Fund Balance - Beginning of Fiscal Year		10,810,048				112,910
<b>Fund Balance - End Of Year</b>		<b>\$14,279,028</b>				<b>\$122,213</b>

Amounts Expressed in Whole Dollars		<u>Capital Reserve (690.</u> <u>1850)</u> <u>(31)</u>	<u>Capital Reserve (1431)</u> <u>(32)</u>	<u>Other Capital Projects</u> <u>Fund</u> <u>(39)</u>	<u>Debt Service</u> <u>(40)</u>	<u>Permanent</u> <u>(90)</u>
<b>Special And Extraordinary Items</b>						
9920	Special Items – Gains					
9930	Extraordinary Items – Gains					
5520	Special Items – Losses					
5530	Extraordinary Items – Losses					
<b>Net Change In Fund Balances</b>				<b>\$30,133</b>	<b>(\$6,490)</b>	
<b>Fund Balance</b>						
0001	Fund Balance - Beginning of Fiscal Year			2,159,379	15,092	
<b>Fund Balance - End Of Year</b>				<b>\$2,189,512</b>	<b>\$8,602</b>	

Amounts Expressed in Whole Dollars		<u>Total Governmental</u> <u>Funds</u>
<b>Special And Extraordinary Items</b>		
9920	Special Items – Gains	
9930	Extraordinary Items – Gains	
5520	Special Items – Losses	
5530	Extraordinary Items – Losses	
<b>Net Change In Fund Balances</b>		<b>\$3,501,926</b>
<b>Fund Balance</b>		
0001	Fund Balance - Beginning of Fiscal Year	13,097,429
<b>Fund Balance - End Of Year</b>		<b>\$16,599,355</b>



LEA : 123466403     Pottstown SD

Printed 1/4/2021 2:15:30 PM

Amounts Expressed in Whole Dollars	Food Service (51)	Child Care Operations (52)	Other Enterprise (58)	TOTAL	Internal Service (60)
<b>Assets And Deferred Outflows Of Resources</b>					
<b>Current Assets</b>					
0100 Cash and Cash Equivalents	2,474,004			2,474,004	2,173,739
0110 Investments					
0130 Due From Other Funds	5,000			5,000	1,532,874
0141 Due From Other Governments					
0142 State Revenue Receivable	1,430			1,430	
0143 Federal Revenue Receivable	33,972			33,972	
0146 Due from Primary Government					
0147 Due from Component Unit					
0150 Other Receivables	84			84	
0170 Inventories	28,422			28,422	
0180 Prepaid Expenses (Expenditures)					131,000
0190 Other Current Assets					
<b>Total Current Assets</b>	<b>\$2,542,912</b>			<b>\$2,542,912</b>	<b>\$3,837,613</b>
<b>Noncurrent Assets</b>					
0211 Land					
0212 Site Improvements (Net)					
0220 Buildings and Building Improvements (Net)					
0230 Machinery, Equipment and Furniture (Net)	70,293			70,293	
0250 Construction in Progress					
0260 Long Term Prepayments					
0290 Other Noncurrent Assets					
<b>Total Noncurrent Assets</b>	<b>\$70,293</b>			<b>\$70,293</b>	
0910 Deferred Outflows of Resources	599,686			599,686	
<b>Total Assets And Deferred Outflows Of Resources</b>	<b>\$3,212,891</b>			<b>\$3,212,891</b>	<b>\$3,837,613</b>

LEA : 123466403     Pottstown SD

Printed 1/4/2021 2:15:30 PM

Amounts Expressed in Whole Dollars	Food Service (51)	Child Care Operations (52)	Other Enterprise (58)	TOTAL	Internal Service (60)
<b>Liabilities And Deferred Inflows Of Resources And Net Position</b>					
<b>Current Liabilities</b>					
0400 Due to Other Funds	1,162,198			1,162,198	
0411 Due to Other Governments					
0413 Due to Component Unit					
0420 Accounts Payable	2,804			2,804	
0430 Contracts Payable					
0440 Current Portion of Long-Term Debt					
0450 Short-Term Payables					
0461 Accrued Salaries and Benefits	28,390			28,390	
0462 Payroll Deductions and Withholding					
0480 Unearned Revenues	930			930	
0490 Other Current Liabilities	1,866			1,866	
<b>Total Current Liabilities</b>	<b>\$1,196,188</b>			<b>\$1,196,188</b>	
<b>Noncurrent Liabilities</b>					
0510 Bonds Payable					
0520 Extended-Term Financing Agreements Payable					
0530 Lease-Purchase Obligations					
0540 Accumulated Compensated Absences	21,497			21,497	
0550 Authority Lease Obligations					
0560 Other Post-Employment Benefits (OPEB)	257,510			257,510	
0570 Net Pension Liability	1,953,089			1,953,089	
0599 Other Noncurrent Liabilities					
<b>Total Noncurrent Liabilities</b>	<b>\$2,232,096</b>			<b>\$2,232,096</b>	
<b>Total Liabilities</b>	<b>\$3,428,284</b>			<b>\$3,428,284</b>	
0950 Deferred Inflows of Resources	140,211			140,211	
<b>Net Position</b>					
0791 Net Investment in Capital Assets					
0008 Restricted Net Position (0792 – 0798)					131,000
0799 Unrestricted Net Position	(355,604)			(355,604)	3,706,613
<b>Total Net Position</b>	<b>(\$355,604)</b>			<b>(\$355,604)</b>	<b>\$3,837,613</b>
<b>Total Liabilities And Deferred Inflows Of Resources And Net Position</b>	<b>\$3,212,891</b>			<b>\$3,212,891</b>	<b>\$3,837,613</b>

Amounts Expressed in Whole Dollars	Food Service (51)	Child Care Operations (52)	Other Enterprise (58)	TOTAL	Internal Service (60)
<b>Operating Revenues</b>					
6600 Food Service Revenue	63,679			63,679	
0071 Charges for Services					5,974,750
0072 Other Operating Revenue	107			107	
<b>Total Operating Revenues</b>	<b>\$63,786</b>			<b>\$63,786</b>	<b>\$5,974,750</b>
<b>Operating Expenses</b>					
100 Personnel Services – Salaries	554,238			554,238	
200 Personnel Services – Employee Benefits	452,553			452,553	5,695,699
300 Purchased Professional and Technical Services	11,702			11,702	
400 Purchased Property Services	7,420			7,420	
500 Other Purchased Services	401			401	
600 Supplies	1,095,779			1,095,779	
740 Depreciation	8,090			8,090	
810 Dues and Fees	748			748	240,441
890 Miscellaneous Expenditures	10,565			10,565	
<b>Total Operating Expenses</b>	<b>\$2,141,496</b>			<b>\$2,141,496</b>	<b>\$5,936,140</b>
<b>Operating Income (Loss)</b>	<b>(\$2,077,710)</b>			<b>(\$2,077,710)</b>	<b>\$38,610</b>
<b>Non Operating Revenues (Expenses)</b>					
6500 Earnings on Investments	18,809			18,809	30,001
6920 Contributions and Donations from Private Sources					
6930 Gains or Losses on Sale of Fixed Assets					
6991 Refunds of a Prior Year Expenditure					
7000 Revenue from State Sources	204,754			204,754	
8000 Revenue from Federal Sources	2,153,235			2,153,235	
9990 Insurance Recoveries					
820 Claims and Judgments Against the LEA					
830 Interest					
<b>TOTAL Non Operating Revenues (Expenses)</b>	<b>\$2,376,798</b>			<b>\$2,376,798</b>	<b>\$30,001</b>
<b>Income (Loss) Before Contributions And Transfers</b>	<b>\$299,088</b>			<b>\$299,088</b>	<b>\$68,611</b>

Amounts Expressed in Whole Dollars	<u>Food Service</u> <u>(51)</u>	<u>Child Care Operations</u> <u>(52)</u>	<u>Other Enterprise</u> <u>(58)</u>	<u>TOTAL</u>	<u>Internal Service</u> <u>(60)</u>
<b>Contributions, Transfers, and Special and Extraordinary Items</b>					
5200 Interfund Transfers – Out	82,450			82,450	
5300 Transfers Out to Component Units/Primary Governments					
5520 Special Items – Losses					
5530 Extraordinary Items – Losses					
9300 Interfund Transfers - IN					
9500 Capital Contributions					
9700 Transfers IN From Component Units/Primary Governments					
9920 Special Items – Gains					
9930 Extraordinary Items – Gains					
<b>Change In Net Position</b>	<b>\$216,638</b>			<b>\$216,638</b>	<b>\$68,611</b>
0002 Net Position - Beginning of Fiscal Year	(443,211)			(443,211)	3,769,002
0003 Accounting Changes / Residual Equity Transfers					
<b>Net Position - End Of Year</b>	<b>(\$226,573)</b>			<b>(\$226,573)</b>	<b>\$3,837,613</b>

LEA : 123466403      Pottstown SD

Printed 1/4/2021 2:16:02 PM

Amounts Expressed in Whole Dollars	Food Service (51)	Child Care Operations (52)	Other Enterprise (58)	TOTAL	Internal Service(60)
<b>Cash Flows From Operating Activities</b>					
0011 Cash Receipts From Users	68,988			68,988	5,906,825
0012 Cash Receipts From Assessments Made to Other Funds					
0013 Cash Receipts From Earnings on Investments					
0014 Cash Receipts From Other Operating Revenue	1,019,475			1,019,475	
0015 Cash Payments To Employees For Services	931,012			931,012	
0016 Cash Payments For Insurance Claims					5,936,826
0017 Cash Payments To Suppliers For Goods and Services	1,001,257			1,001,257	
0018 Cash Payments For Other Operating Expenses					
<b>Net Cash Provided By (Used For) Operating Activities</b>	<b>(\$843,806)</b>			<b>(\$843,806)</b>	<b>(\$30,001)</b>
<b>Cash Flows From Non-Capital Financing Activities</b>					
0021 Receipts From Local Sources - 6000					
0022 Receipts From State Sources - 7000	205,686			205,686	
0023 Receipts From Federal Sources -8000	2,043,510			2,043,510	
0024 Notes and Loans Received (Repaid)					
0025 Interest Paid on Notes/Loans - 5100-830					
0026 Operating Transfers In (Out)/Residual Equity Trans	(82,450)			(82,450)	
0027 Operating Transfers In (Out) Primary Government / Comp Unit					
0028 Receipts From Refund of Prior Year Expenditures - 6991					
0029 Special and Extraordinary Gains (losses)					
0030 Receipts from Insurance Recoveries -9990					
<b>Net Cash Prov By (Used for) Non-Capital Financing Activities</b>	<b>\$2,166,746</b>			<b>\$2,166,746</b>	
<b>Cash Flows From Capital and Related Financing Activities</b>					
0031 Payments For Fac Acq, Const, and Imp - 4000	(8,837)			(8,837)	
0032 Gain / (Loss) on Sale of Fixed Assets - 6930					
0033 Proceeds From Extended Term Financing - 9200					
0034 Principal Paid on Financing Agreements					
0035 Interest Paid on Financing Agreements - 5100-830					
0036 (Inc) Dec in Contributed Capital					
<b>Net Cash Prov By (Used for) Capital and Related Financing Activities</b>	<b>(\$8,837)</b>			<b>(\$8,837)</b>	
<b>Cash Flows From Investing Activities</b>					
0041 Earnings on Investments - 6500	18,809			18,809	30,001
0042 Purchase of Inv Securities / Deposits to Inv Pools					
0043 Receipts From Investment Pool Withdrawals					
0044 Proceeds from Sale and Maturity of Inv Securities					

LEA : 123466403     Pottstown SD

Printed 1/4/2021 2:16:02 PM

0045   Loans Received (Paid)

Net Cash Prov By (Used for) Investing Activities	\$18,809	\$18,809	\$30,001
--	----------	----------	----------

LEA : 123466403      Pottstown SD

Printed 1/4/2021 2:16:02 PM

	Food Service (51)	Child Care Operations (52)	Other Enterprise (58)	TOTAL	Internal Service (60)
Net Increase (Decrease) in Cash Flows	1,332,912			1,332,912	
0004 Cash and Cash Equivalents Beginning of Year	1,141,092			1,141,092	
Cash and Cash Equivalents at Year End	\$2,474,004			\$2,474,004	
Reconciliation of Operating Income (Loss) To Net Cash Provided by (Used For) Operating Activities					
0005 Operating Income (Loss) per REP	(2,077,710)			(2,077,710)	38,610
Adjustments					
0051 Depreciation and Net Amortization	8,090			8,090	
0052 Provision for Uncollectible Accounts					
0053 Other Adjustments	134,149			134,149	
Effect of Changes in Assets, Liabilities, Deferred Outflows and Deferred Inflows					
0054 (Inc) Dec In Accounts Receivable (0120-0150)	(13)			(13)	217,012
0055 Advances to Other Funds (0160)	1,023,640			1,023,640	
0056 (Inc) Dec in Inventories (0170)	(9,891)			(9,891)	
0057 (Inc) Dec in Prepaid Expenses (0180)					
0058 (Inc) Dec in Other Current or Noncurrent Assets					(285,623)
0064 Deferred Outflows (0910)	(165,909)			(165,909)	
0059 Inc (Dec) in Accounts Payable (0400-0450)	1,480			1,480	
0060 Inc (Dec) in Accrued Salaries/Benefits (0461)	7,298			7,298	
0065 Inc (Dec) in Net Pension Liabilities (0570)	223,032			223,032	
0066 Inc (Dec) in Other Postemp Benefit Oblig (0560)	(9,445)			(9,445)	
0061 Inc (Dec) in Payroll Deductions/Withholding (0462)					
0062 Inc (Dec) in Unearned Revenue (0480)	670			670	
0063 Inc (Dec) in Other Current or Noncurrent Liabilities	(3,002)			(3,002)	
0067 Deferred Inflows (0950)	23,805			23,805	
Total Adjustments	\$1,233,904			\$1,233,904	(\$68,611)
Cash Provided By (Used for) Total	(\$843,806)			(\$843,806)	(\$30,001)

COMBINED STATEMENT OF CASH FLOWS  
SCHEDULE OF NONCASH INVESTING, CAPITAL, AND FINANCING ACTIVITIES

Explanation of Transaction and Balance Sheet Effect	Amount
Total	



LEA : 123466403     Pottstown SD

Printed 1/4/2021 2:16:10 PM

Amounts Expressed in Whole Dollars	<u>Private Purpose Trust</u> <u>(71)</u>	<u>Investment Trust</u> <u>(72)</u>	<u>Pension Trust</u> <u>(73)</u>	<u>Student Activity Custodial</u> <u>(81)</u>
<b>Assets And Deferred Outflows Of Resources</b>				
<b>Assets</b>				
0100 Cash and Cash Equivalents	84,216			
0110 Investments				
0130 Due From Other Funds				
0140 Due from Other Governments, Primary Government and Component Units				
0150 Other Receivables				
0170 Inventories				
0180 Prepaid Expenses (Expenditures)				
0190 Other Current Assets				
0220 Buildings and Building Improvements (Net)				
0230 Machinery, Equipment and Furniture (Net)				
<b>Total Assets</b>	<b>\$84,216</b>			
0910 Deferred Outflows of Resources				
<b>Total Assets And Deferred Outflows Of Resources</b>	<b>\$84,216</b>			

LEA : 123466403     Pottstown SD

Printed 1/4/2021 2:16:10 PM

Amounts Expressed in Whole Dollars		<u>Other Custodial</u> <u>(89)</u>	<u>Fiduciary Component Units</u> <u>(98)</u>	<u>Total Fiduciary Funds</u>
<b>Assets And Deferred Outflows Of Resources</b>				
<b>Assets</b>				
0100	Cash and Cash Equivalents			84,216
0110	Investments			
0130	Due From Other Funds			
0140	Due from Other Governments, Primary Government and Component Units			
0150	Other Receivables			
0170	Inventories			
0180	Prepaid Expenses (Expenditures)			
0190	Other Current Assets			
0220	Buildings and Building Improvements (Net)			
0230	Machinery, Equipment and Furniture (Net)			
<b>Total Assets</b>				<b>\$84,216</b>
0910	Deferred Outflows of Resources			
<b>Total Assets And Deferred Outflows Of Resources</b>				<b>\$84,216</b>

LEA : 123466403     Pottstown SD

Printed 1/4/2021 2:16:10 PM

Amounts Expressed in Whole Dollars		<u>Private Purpose Trust</u>	<u>Investment Trust</u>	<u>Pension Trust</u>	<u>Student Activity Custodial</u>
		<u>(71)</u>	<u>(72)</u>	<u>(73)</u>	<u>(81)</u>
<b>Liabilities, Deferred Inflows Of Resources And Net Position</b>					
<b>Liabilities</b>					
0400	Due to Other Funds				
0410	Due to Other Governments, Primary Government and Component Units				
0420	Accounts Payable				
0430	Contracts Payable				
0450	Short-Term Payables				
0460	Payroll Accruals and Withholdings				
0480	Unearned Revenues				
0490	Other Current Liabilities				
<b>Total Liabilities</b>					
0950	Deferred Inflows of Resources				
<b>Net Position</b>					
0791	Net Investment in Capital Assets				
0009	Restricted Net Position (0792 – 0798)	84,216			
0799	Unrestricted Net Position				
<b>Total Net Position</b>		<b>\$84,216</b>			
<b>Total Liabilities, Deferred Inflows Of Resources And Net Position</b>		<b>\$84,216</b>			

LEA : 123466403     Pottstown SD

Printed 1/4/2021 2:16:10 PM

Amounts Expressed in Whole Dollars		<u>Other Custodial</u> <u>(89)</u>	<u>Fiduciary Component Units</u> <u>(98)</u>	<u>Total Fiduciary Funds</u>
<b>Liabilities, Deferred Inflows Of Resources And Net Position</b>				
<b>Liabilities</b>				
0400	Due to Other Funds			
0410	Due to Other Governments, Primary Government and Component Units			
0420	Accounts Payable			
0430	Contracts Payable			
0450	Short-Term Payables			
0460	Payroll Accruals and Withholdings			
0480	Unearned Revenues			
0490	Other Current Liabilities			
<b>Total Liabilities</b>				
0950	Deferred Inflows of Resources			
<b>Net Position</b>				
0791	Net Investment in Capital Assets			
0009	Restricted Net Position (0792 – 0798)			84,216
0799	Unrestricted Net Position			
<b>Total Net Position</b>				<b>\$84,216</b>
<b>Total Liabilities, Deferred Inflows Of Resources And Net Position</b>				<b>\$84,216</b>

LEA : 123466403     Pottstown SD

Printed 1/4/2021 2:16:18 PM

Amounts Expressed in Whole Dollars	<u>Private Purpose Trust</u> <u>(71)</u>	<u>Investment Trust</u> <u>(72)</u>	<u>Pension Trust</u> <u>(73)</u>	<u>Student Activity</u> <u>Custodial</u> <u>(81)</u>	<u>Other Custodial</u> <u>(89)</u>	<u>Fiduciary Component</u> <u>Units</u> <u>(98)</u>
<b>Additions</b>						
0091 Gifts and Contributions	64,260					
0095 Net Investment Earnings	1,568					
0092 Other Additions						
<b>Deductions</b>						
0093 Scholarships Awarded						
0094 Other Deductions	63,245					
<b>Change In Net Position</b>	<b>\$2,583</b>					
0006 Net Position – Beginning of Fiscal Year	81,634					
0007 Net Position Held in Trust for Pension Benefits						
<b>Net Position - End of Fiscal Year</b>	<b>\$84,217</b>					

LEA : 123466403     Pottstown SD

Printed 1/4/2021 2:16:18 PM

Amounts Expressed in Whole Dollars		<u>Total Fiduciary</u>
		<u>Funds</u>
<b>Additions</b>		
0091	Gifts and Contributions	64,260
0095	Net Investment Earnings	1,568
0092	Other Additions	
<b>Deductions</b>		
0093	Scholarships Awarded	
0094	Other Deductions	63,245
<b>Change In Net Position</b>		<b>\$2,583</b>
0006	Net Position – Beginning of Fiscal Year	81,634
0007	Net Position Held in Trust for Pension Benefits	
<b>Net Position - End of Fiscal Year</b>		<b>\$84,217</b>

	Revenue Reported In Current Year	Current Year Tax Accrual	Prior Year Tax Accrual	Taxes Collected In Current Year
<b>Revenue from Local Sources</b>				
6111 Current Real Estate Taxes	28,955,555.15			28,955,555.15
6112 Interim Real Estate Taxes	62,678.47			62,678.47
6113 Public Utility Realty Taxes	29,860.58			29,860.58
6114 Payments in Lieu of Current Taxes - State / Local	41,586.72			41,586.72
6120 Current Per Capita Taxes, Section 679	31,423.31			31,423.31
6141 Current Act 511 Per Capita Taxes	31,423.31			31,423.31
6143 Current Act 511 Local Services Taxes	43,034.09			43,034.09
6151 Current Act 511 Earned Income Taxes	2,306,267.43			2,306,267.43
6152 Current Act 511 Occupation Taxes	164,725.84			164,725.84
6153 Current Act 511 Real Estate Transfer Taxes	452,681.44			452,681.44
6411 Delinquent Real Estate Taxes	915,925.31			915,925.31
6420 Delinquent Per Capita Taxes, Section 679	24,718.82			24,718.82
6440 Delinquent Local Enabling Taxes - Flat Rate Assessments	24,718.82			24,718.82
6452 Delinquent Act 511 Occupation Taxes	194,222.03			194,222.03
6500 Earnings on Investments	400,364.78			
6700 Revenues from LEA Activities	21,158.00			
6832 Federal IDEA Revenue Received as Pass Through	740,953.51			
6839 Federal Revenue Received from Other Sources	6,329.43			
6910 Rentals	169,757.00			
6920 Contributions and Donations from Private Sources	17,500.00			
6991 Refunds of a Prior Year Expenditure	72,550.31			
6999 Other Revenues Not Specified Above	366,773.41			
<b>TOTAL Revenue from Local Sources</b>	<b>\$35,074,207.76</b>			<b>\$33,278,821.32</b>

	Revenue Reported In Current Year			
<b><u>Revenue from State Sources</u></b>				
7111 Basic Education Funding-Formula	12,144,141.17			
7112 Basic Education Funding-Social Security	952,291.96			
7160 Tuition for Orphans Subsidy	63,115.94			
7220 Vocational Education	481,439.36			
7271 Special Education funds for School-Aged Pupils	2,437,714.08			
7292 Pre-K Counts	2,467,500.00			
7311 Pupil Transportation Subsidy	642,365.63			
7312 Nonpublic and Charter School Pupil Transportation Subsidy	11,550.00			
7320 Rental and Sinking Fund Payments / Building Reimbursement Subsidy	1,145,259.81			
7330 Health Services (Medical, Dental, Nurse, Act 25)	63,372.69			
7340 State Property Tax Reduction Allocation	1,619,578.20			
7505 Ready to Learn Block Grant	559,007.00			
7506 PAsmart Grants	35,000.00			
7509 Supplemental Equipment Grants	34,868.87			
7820 State Share of Retirement Contributions	5,577,782.36			
<b>TOTAL Revenue from State Sources</b>	<b>\$28,234,987.07</b>			



	Revenue Reported In Current Year			
<b><u>Revenue from Federal Sources</u></b>				
8390 Other Restricted Federal Grants-in-Aid Directly from the Federal Government	70,102.65			
8514 NCLB, Title I - Improving the Academic Achievement of the Disadvantaged	1,512,467.02			
8515 NCLB, Title II - Preparing, Training and Recruiting High Quality Teachers and Principals	179,752.00			
8517 NCLB, Title IV - 21St Century Schools	1,022,690.70			
8521 Vocational Education - Operating Expenditures	71,279.00			
8749 Other CARES Act Funding	244,460.00			
8810 School-Based Access Medicaid Reimbursement Program (SBAP) Reimbursements (Access)	400,000.00			
8820 Medical Assistance Reimbursement for Administrative Claiming (Quarterly) Program	21,547.54			
<b>TOTAL Revenue from Federal Sources</b>	<b>\$3,522,298.91</b>			

	Revenue Reported In Current Year	
<b><u>Other Financing Sources</u></b>		
9350 Enterprise Fund Transfers	82,449.88	
<b>TOTAL Other Financing Sources</b>	<b>\$82,449.88</b>	
<b>TOTAL FROM ALL SOURCES</b>	<b>\$66,913,943.62</b>	<b>\$33,278,821.32</b>

LEA : 123466403     Pottstown SD

Printed 1/4/2021 2:16:37 PM

	General Fund (10)	Student Sponsored Activity Fund (21)	Public Purpose Trust (27)	Other Compt Approved (28)	Athletic / Activity (29)	Capital Reserve (690, 1850) (31)
<b>6000 Revenue from Local Sources</b>						
6111 Current Real Estate Taxes	28,955,555.15					
6112 Interim Real Estate Taxes	62,678.47					
6113 Public Utility Realty Taxes	29,860.58					
6114 Payments in Lieu of Current Taxes - State / Local	41,586.72					
6120 Current Per Capita Taxes, Section 679	31,423.31					
6141 Current Act 511 Per Capita Taxes	31,423.31					
6143 Current Act 511 Local Services Taxes	43,034.09					
6151 Current Act 511 Earned Income Taxes	2,306,267.43					
6152 Current Act 511 Occupation Taxes	164,725.84					
6153 Current Act 511 Real Estate Transfer Taxes	452,681.44					
6411 Delinquent Real Estate Taxes	915,925.31					
6420 Delinquent Per Capita Taxes, Section 679	24,718.82					
6440 Delinquent Local Enabling Taxes - Flat Rate Assessments	24,718.82					
6452 Delinquent Act 511 Occupation Taxes	194,222.03					
6500 Earnings on Investments	400,364.78				1,633.66	
6700 Revenues from LEA Activities	21,158.00				38,678.90	
6832 Federal IDEA Revenue Received as Pass Through	740,953.51					
6839 Federal Revenue Received from Other Sources	6,329.43					
6910 Rentals	169,757.00					
6920 Contributions and Donations from Private Sources	17,500.00					
6991 Refunds of a Prior Year Expenditure	72,550.31					
6999 Other Revenues Not Specified Above	366,773.41					
<b>6000 Total Revenue from Local Sources</b>	<b>\$35,074,207.76</b>				<b>\$40,312.56</b>	
<b>7000 Revenue from State Sources</b>						
7111 Basic Education Funding-Formula	12,144,141.17					
7112 Basic Education Funding-Social Security	952,291.96					
7160 Tuition for Orphans Subsidy	63,115.94					
7220 Vocational Education	481,439.36					
7271 Special Education funds for School-Aged Pupils	2,437,714.08					
7292 Pre-K Counts	2,467,500.00					
7311 Pupil Transportation Subsidy	642,365.63					
7312 Nonpublic and Charter School Pupil Transportation Subsidy	11,550.00					
7320 Rental and Sinking Fund Payments / Building Reimbursement Subsidy	1,145,259.81					
7330 Health Services (Medical, Dental, Nurse, Act 25)	63,372.69					
7340 State Property Tax Reduction Allocation	1,619,578.20					

LEA : 123466403     Pottstown SD

Printed 1/4/2021 2:16:37 PM

	Capital Reserve (1431) (32)	Other Capital Projects Fund (39)	Debt Service (40)	Permanent (90)	Total
<b>6000 Revenue from Local Sources</b>					
6111 Current Real Estate Taxes					28,955,555.15
6112 Interim Real Estate Taxes					62,678.47
6113 Public Utility Realty Taxes					29,860.58
6114 Payments in Lieu of Current Taxes - State / Local					41,586.72
6120 Current Per Capita Taxes, Section 679					31,423.31
6141 Current Act 511 Per Capita Taxes					31,423.31
6143 Current Act 511 Local Services Taxes					43,034.09
6151 Current Act 511 Earned Income Taxes					2,306,267.43
6152 Current Act 511 Occupation Taxes					164,725.84
6153 Current Act 511 Real Estate Transfer Taxes					452,681.44
6411 Delinquent Real Estate Taxes					915,925.31
6420 Delinquent Per Capita Taxes, Section 679					24,718.82
6440 Delinquent Local Enabling Taxes - Flat Rate Assessments					24,718.82
6452 Delinquent Act 511 Occupation Taxes					194,222.03
6500 Earnings on Investments		9,932.00	2.00		411,932.44
6700 Revenues from LEA Activities					59,836.90
6832 Federal IDEA Revenue Received as Pass Through					740,953.51
6839 Federal Revenue Received from Other Sources					6,329.43
6910 Rentals					169,757.00
6920 Contributions and Donations from Private Sources					17,500.00
6991 Refunds of a Prior Year Expenditure					72,550.31
6999 Other Revenues Not Specified Above		20,201.00			386,974.41
<b>6000 Total Revenue from Local Sources</b>		<b>\$30,133.00</b>	<b>\$2.00</b>		<b>\$35,144,655.32</b>
<b>7000 Revenue from State Sources</b>					
7111 Basic Education Funding-Formula					12,144,141.17
7112 Basic Education Funding-Social Security					952,291.96
7160 Tuition for Orphans Subsidy					63,115.94
7220 Vocational Education					481,439.36
7271 Special Education funds for School-Aged Pupils					2,437,714.08
7292 Pre-K Counts					2,467,500.00
7311 Pupil Transportation Subsidy					642,365.63
7312 Nonpublic and Charter School Pupil Transportation Subsidy					11,550.00
7320 Rental and Sinking Fund Payments / Building Reimbursement Subsidy					1,145,259.81
7330 Health Services (Medical, Dental, Nurse, Act 25)					63,372.69
7340 State Property Tax Reduction Allocation					1,619,578.20

LEA : 123466403     Pottstown SD

Printed 1/4/2021 2:16:37 PM

	<u>General Fund (10)</u>	<u>Student Sponsored Activity Fund (21)</u>	<u>Public Purpose Trust (27)</u>	<u>Other Compt Approved (28)</u>	<u>Athletic / Activity (29)</u>	<u>Capital Reserve (690, 1850) (31)</u>
<b>7000 Revenue from State Sources</b>						
7505 Ready to Learn Block Grant	559,007.00					
7506 PAsmart Grants	35,000.00					
7509 Supplemental Equipment Grants	34,868.87					
7820 State Share of Retirement Contributions	5,577,782.36					
<b>7000 Total Revenue from State Sources</b>	<b>\$28,234,987.07</b>					
<b>8000 Revenue from Federal Sources</b>						
8390 Other Restricted Federal Grants-in-Aid Directly from the Federal Government	70,102.65					
8514 NCLB, Title I - Improving the Academic Achievement of the Disadvantaged	1,512,467.02					
8515 NCLB, Title II - Preparing, Training and Recruiting High Quality Teachers and Principals	179,752.00					
8517 NCLB, Title IV - 21st Century Schools	1,022,690.70					
8521 Vocational Education - Operating Expenditures	71,279.00					
8749 Other CARES Act Funding	244,460.00					
8810 School-Based Access Medicaid Reimbursement Program (SBAP) Reimbursements (Access)	400,000.00					
8820 Medical Assistance Reimbursement for Administrative Claiming (Quarterly) Program	21,547.54					
<b>8000 Total Revenue from Federal Sources</b>	<b>\$3,522,298.91</b>					
<b>9000 Other Financing Sources</b>						
9120 Proceeds from Refunding of Bonds						
9130 Bond Premiums						
9350 Enterprise Fund Transfers	82,449.88					
<b>9000 Total Other Financing Sources</b>	<b>\$82,449.88</b>					
<b>Total From All Sources</b>	<b>\$66,913,943.62</b>				<b>\$40,312.56</b>	

LEA : 123466403     Pottstown SD

Printed 1/4/2021 2:16:37 PM

	<u>Capital Reserve</u> <u>(1431) (32)</u>	<u>Other Capital</u> <u>Projects Fund (39)</u>	<u>Debt Service (40)</u>	<u>Permanent (90)</u>	<u>Total</u>
<b>7000 Revenue from State Sources</b>					
7505 Ready to Learn Block Grant					559,007.00
7506 PAsmart Grants					35,000.00
7509 Supplemental Equipment Grants					34,868.87
7820 State Share of Retirement Contributions					5,577,782.36
<b>7000 Total Revenue from State Sources</b>					<b>\$28,234,987.07</b>
<b>8000 Revenue from Federal Sources</b>					
8390 Other Restricted Federal Grants-in-Aid Directly from the Federal Government					70,102.65
8514 NCLB, Title I - Improving the Academic Achievement of the Disadvantaged					1,512,467.02
8515 NCLB, Title II - Preparing, Training and Recruiting High Quality Teachers and Principals					179,752.00
8517 NCLB, Title IV - 21St Century Schools					1,022,690.70
8521 Vocational Education - Operating Expenditures					71,279.00
8749 Other CARES Act Funding					244,460.00
8810 School-Based Access Medicaid Reimbursement Program (SBAP) Reimbursements (Access)					400,000.00
8820 Medical Assistance Reimbursement for Administrative Claiming (Quarterly) Program					21,547.54
<b>8000 Total Revenue from Federal Sources</b>					<b>\$3,522,298.91</b>
<b>9000 Other Financing Sources</b>					
9120 Proceeds from Refunding of Bonds			19,445,000.00		19,445,000.00
9130 Bond Premiums			931,992.00		931,992.00
9350 Enterprise Fund Transfers					82,449.88
<b>9000 Total Other Financing Sources</b>			<b>\$20,376,992.00</b>		<b>\$20,459,441.88</b>
<b>Total From All Sources</b>		<b>\$30,133.00</b>	<b>\$20,376,994.00</b>		<b>\$87,361,383.18</b>

LEA : 123466403     Pottstown SD

Printed 1/4/2021 2:16:50 PM

	<u>General Fund (10)</u>	<u>Student Sponsored Activity Fund (21)</u>	<u>Public Purpose Trust (27)</u>	<u>Other Compt Approved (28)</u>	<u>Athletic / Activity (29)</u>	<u>Capital Reserve (690. 1850) (31)</u>
Revenue from Local Sources	35,074,207.76				40,312.56	
Revenue from State Sources	28,234,987.07					
Revenue from Federal Sources	3,522,298.91					
Other Financing Sources	82,449.88					
Total From All Sources	\$66,913,943.62				\$40,312.56	

LEA : 123466403     Pottstown SD

Printed 1/4/2021 2:16:50 PM

	<u>Capital Reserve (1431)</u> <u>(32)</u>	<u>Other Capital Projects</u> <u>Fund (39)</u>	<u>Debt Service (40)</u>	<u>Permanent (90)</u>	<u>Total</u>
Revenue from Local Sources		30,133.00	2.00		35,144,655.32
Revenue from State Sources					28,234,987.07
Revenue from Federal Sources					3,522,298.91
Other Financing Sources			20,376,992.00		20,459,441.88
Total From All Sources		\$30,133.00	\$20,376,994.00		\$87,361,383.18



LEA : 123466403     Pottstown SD

Printed 1/4/2021 2:16:58 PM

<b>General Fund (10)</b>	
<b>1000 Instruction</b>	<b><u>Total</u></b>
<b>100 <u>Personnel Services – Salaries</u></b>	
100 Personnel Services – Salaries	16,966,901.28
<b>Total Personnel Services – Salaries</b>	<b>\$16,966,901.28</b>
<b>200 <u>Personnel Services – Employee Benefits</u></b>	
210 Group Insurance – Contracted Provider	3,736,257.11
220 Social Security Contributions	1,239,767.60
230 PSERS Retirement Contributions	5,769,559.89
250 Unemployment Compensation	17,407.19
260 Workers' Compensation	166,779.27
<b>Total Personnel Services – Employee Benefits</b>	<b>\$10,929,771.06</b>
<b>300 <u>Purchased Professional and Technical Services</u></b>	
322 Professional Educational Services – Ius	1,662,860.33
323 Professional Educational Services – Other Educational Agencies	14,894.10
329 Professional Educational Services – Other	981,577.30
330 Other Professional Services	196,380.88
390 Other Purchased Professional and Technical Services	344,953.62
<b>Total Purchased Professional and Technical Services</b>	<b>\$3,200,666.23</b>
<b>400 <u>Purchased Property Services</u></b>	
410 Cleaning Services	1,567.15
430 Repairs and Maintenance Services	3,501.02
460 Extermination Services	(694.09)
<b>Total Purchased Property Services</b>	<b>\$4,374.08</b>
<b>500 <u>Other Purchased Services</u></b>	
510 Student Transportation Services	2,555.15
530 Communications	9,399.30
549 Other Advertising/Public Relations	129.38
550 Printing and Binding	260.55
561 Tuition To Other School Districts Within the State	282,152.15
562 Tuition To Pennsylvania Charter Schools	3,321,850.04
563 Tuition To Nonpublic Schools	2,410,354.89
567 Tuition To Approved Private Schools (APS) and PA Chartered Schools for the Deaf and Blind	514,017.08
568 Tuition To Private Residential Rehabilitative Institutions (PRRI) [In-State] and Detention Centers	9,198.12
580 Travel	22,138.71
594 IU Payment By Withholding for Institutionalized Children's Programs – Special Classes	1,724.99
<b>Total Other Purchased Services</b>	<b>\$6,573,780.36</b>
<b>600 <u>Supplies</u></b>	
610 General Supplies	704,530.62
640 Books and Periodicals	157,347.96
650 Supplies & Fees – Technology Related	366,175.71
<b>Total Supplies</b>	<b>\$1,228,054.29</b>
<b>700 <u>Property</u></b>	
752 Capital Equipment – Original and Additional	126,040.41
<b>Total Property</b>	<b>\$126,040.41</b>

LEA : 123466403     Pottstown SD

Printed 1/4/2021 2:16:58 PM

General Fund (10)	
1000 Instruction	<u>Total</u>
800 <u>Other Objects</u>	
810 Dues and Fees	1,090.00
890 Miscellaneous Expenditures	926,100.00
Total Other Objects	\$927,190.00
Total 1000 Instruction	\$39,956,777.71

LEA : 123466403     Pottstown SD

Printed 1/4/2021 2:16:58 PM

General Fund (10)

1100 Regular Programs – Elementary / Secondary

	<u>Elementary</u>	<u>Secondary</u>	<u>Federal</u>	<u>Total</u>
<b>100 <u>Personnel Services – Salaries</u></b>				
100 Personnel Services – Salaries	5,716,380.86	3,810,920.58	1,256,524.00	10,783,825.44
<b>Total Personnel Services – Salaries</b>	<b>\$5,716,380.86</b>	<b>\$3,810,920.58</b>	<b>\$1,256,524.00</b>	<b>\$10,783,825.44</b>
<b>200 <u>Personnel Services – Employee Benefits</u></b>				
210 Group Insurance – Contracted Provider	1,070,186.05	713,457.37	334,042.29	2,117,685.71
220 Social Security Contributions	420,070.83	280,047.22	91,391.01	791,509.06
230 PSERS Retirement Contributions	2,129,053.62	1,419,369.08	132,491.29	3,680,913.99
250 Unemployment Compensation	10,444.31	6,962.88		17,407.19
260 Workers' Compensation	100,067.56	66,711.71		166,779.27
<b>Total Personnel Services – Employee Benefits</b>	<b>\$3,729,822.37</b>	<b>\$2,486,548.26</b>	<b>\$557,924.59</b>	<b>\$6,774,295.22</b>
<b>300 <u>Purchased Professional and Technical Services</u></b>				
329 Professional Educational Services – Other	223,677.97	149,118.65	1,535.00	374,331.62
390 Other Purchased Professional and Technical Services	59,195.53	39,463.68	7,190.25	105,849.46
<b>Total Purchased Professional and Technical Services</b>	<b>\$282,873.50</b>	<b>\$188,582.33</b>	<b>\$8,725.25</b>	<b>\$480,181.08</b>
<b>400 <u>Purchased Property Services</u></b>				
430 Repairs and Maintenance Services	1,231.81	821.21		2,053.02
<b>Total Purchased Property Services</b>	<b>\$1,231.81</b>	<b>\$821.21</b>		<b>\$2,053.02</b>
<b>500 <u>Other Purchased Services</u></b>				
510 Student Transportation Services	229.94	153.29		383.23
549 Other Advertising/Public Relations	69.00	46.00		115.00
550 Printing and Binding	156.33	104.22		260.55
562 Tuition To Pennsylvania Charter Schools	1,022,013.62	681,342.42		1,703,356.04
580 Travel	3,886.46	2,590.97	1,616.26	8,093.69
<b>Total Other Purchased Services</b>	<b>\$1,026,355.35</b>	<b>\$684,236.90</b>	<b>\$1,616.26</b>	<b>\$1,712,208.51</b>
<b>600 <u>Supplies</u></b>				
610 General Supplies	57,113.99	38,076.00	105,821.80	201,011.79
640 Books and Periodicals	22,241.08	14,827.38		37,068.46
650 Supplies & Fees – Technology Related	20,736.00	13,824.00		34,560.00
<b>Total Supplies</b>	<b>\$100,091.07</b>	<b>\$66,727.38</b>	<b>\$105,821.80</b>	<b>\$272,640.25</b>
<b>700 <u>Property</u></b>				
752 Capital Equipment – Original and Additional	2,405.69	1,603.80		4,009.49
<b>Total Property</b>	<b>\$2,405.69</b>	<b>\$1,603.80</b>		<b>\$4,009.49</b>
<b>Total 1100 Regular Programs – Elementary / Secondary</b>	<b>\$10,859,160.65</b>	<b>\$7,239,440.46</b>	<b>\$1,930,611.90</b>	<b>\$20,029,213.01</b>

LEA : 123466403     Pottstown SD

Printed 1/4/2021 2:16:58 PM

General Fund (10)

1110 Regular Programs	Elementary	Secondary	Federal	Total
<b>100 Personnel Services – Salaries</b>				
100 Personnel Services – Salaries	5,716,380.86	3,810,920.58	1,256,524.00	10,783,825.44
<b>Total Personnel Services – Salaries</b>	<b>\$5,716,380.86</b>	<b>\$3,810,920.58</b>	<b>\$1,256,524.00</b>	<b>\$10,783,825.44</b>
<b>200 Personnel Services – Employee Benefits</b>				
210 Group Insurance – Contracted Provider	1,070,186.05	713,457.37	334,042.29	2,117,685.71
220 Social Security Contributions	420,070.83	280,047.22	91,391.01	791,509.06
230 PSERS Retirement Contributions	2,129,053.62	1,419,369.08	132,491.29	3,680,913.99
250 Unemployment Compensation	10,444.31	6,962.88		17,407.19
260 Workers' Compensation	100,067.56	66,711.71		166,779.27
<b>Total Personnel Services – Employee Benefits</b>	<b>\$3,729,822.37</b>	<b>\$2,486,548.26</b>	<b>\$557,924.59</b>	<b>\$6,774,295.22</b>
<b>300 Purchased Professional and Technical Services</b>				
329 Professional Educational Services – Other	223,677.97	149,118.65	1,535.00	374,331.62
390 Other Purchased Professional and Technical Services	59,195.53	39,463.68	7,190.25	105,849.46
<b>Total Purchased Professional and Technical Services</b>	<b>\$282,873.50</b>	<b>\$188,582.33</b>	<b>\$8,725.25</b>	<b>\$480,181.08</b>
<b>400 Purchased Property Services</b>				
430 Repairs and Maintenance Services	1,231.81	821.21		2,053.02
<b>Total Purchased Property Services</b>	<b>\$1,231.81</b>	<b>\$821.21</b>		<b>\$2,053.02</b>
<b>500 Other Purchased Services</b>				
510 Student Transportation Services	229.94	153.29		383.23
549 Other Advertising/Public Relations	69.00	46.00		115.00
550 Printing and Binding	156.33	104.22		260.55
562 Tuition To Pennsylvania Charter Schools	1,022,013.62	681,342.42		1,703,356.04
580 Travel	3,886.46	2,590.97	1,616.26	8,093.69
<b>Total Other Purchased Services</b>	<b>\$1,026,355.35</b>	<b>\$684,236.90</b>	<b>\$1,616.26</b>	<b>\$1,712,208.51</b>
<b>600 Supplies</b>				
610 General Supplies	57,113.99	38,076.00	105,821.80	201,011.79
640 Books and Periodicals	22,241.08	14,827.38		37,068.46
650 Supplies & Fees – Technology Related	20,736.00	13,824.00		34,560.00
<b>Total Supplies</b>	<b>\$100,091.07</b>	<b>\$66,727.38</b>	<b>\$105,821.80</b>	<b>\$272,640.25</b>
<b>700 Property</b>				
752 Capital Equipment – Original and Additional	2,405.69	1,603.80		4,009.49
<b>Total Property</b>	<b>\$2,405.69</b>	<b>\$1,603.80</b>		<b>\$4,009.49</b>
<b>Total 1110 Regular Programs</b>	<b>\$10,859,160.65</b>	<b>\$7,239,440.46</b>	<b>\$1,930,611.90</b>	<b>\$20,029,213.01</b>

LEA : 123466403     Pottstown SD

Printed 1/4/2021 2:16:58 PM

General Fund (10)				
1200 Special Programs – Elementary / Secondary	<u>Elementary</u>	<u>Secondary</u>	<u>Federal</u>	<u>Total</u>
100 <u>Personnel Services – Salaries</u>				
100 Personnel Services – Salaries	2,114,635.42	1,409,756.95	500,505.26	4,024,897.63
Total Personnel Services – Salaries	\$2,114,635.42	\$1,409,756.95	\$500,505.26	\$4,024,897.63
200 <u>Personnel Services – Employee Benefits</u>				
210 Group Insurance – Contracted Provider	640,329.02	426,886.01	108,343.25	1,175,558.28
220 Social Security Contributions	153,745.10	102,496.73	36,602.24	292,844.07
230 PSERS Retirement Contributions	742,076.12	494,717.42	134,067.30	1,370,860.84
Total Personnel Services – Employee Benefits	\$1,536,150.24	\$1,024,100.16	\$279,012.79	\$2,839,263.19
300 <u>Purchased Professional and Technical Services</u>				
322 Professional Educational Services – Ius	950,285.50	631,698.67		1,581,984.17
329 Professional Educational Services – Other	127,963.09	85,308.74	357,740.59	571,012.42
330 Other Professional Services	108,529.55	72,353.03	9,709.00	190,591.58
390 Other Purchased Professional and Technical Services	6,902.23	4,601.48		11,503.71
Total Purchased Professional and Technical Services	\$1,193,680.37	\$793,961.92	\$367,449.59	\$2,355,091.88
500 <u>Other Purchased Services</u>				
510 Student Transportation Services	557.35	371.57		928.92
530 Communications	3,915.57	2,610.38		6,525.95
561 Tuition To Other School Districts Within the State	13,625.65	9,083.76		22,709.41
562 Tuition To Pennsylvania Charter Schools	971,096.40	647,397.60		1,618,494.00
563 Tuition To Nonpublic Schools	1,301,081.33	867,387.55		2,168,468.88
567 Tuition To Approved Private Schools (APS) and PA Chartered Schools for the Deaf and Blind	308,410.25	205,606.83		514,017.08
568 Tuition To Private Residential Rehabilitative Institutions (PRRI) [In-State] and Detention Centers	5,518.87	3,679.25		9,198.12
580 Travel	520.52	347.00	123.70	991.22
594 IU Payment By Withholding for Institutionalized Children's Programs – Special Classes	1,034.99	690.00		1,724.99
Total Other Purchased Services	\$2,605,760.93	\$1,737,173.94	\$123.70	\$4,343,058.57
600 <u>Supplies</u>				
610 General Supplies	54,272.08	36,181.39	17,504.66	107,958.13
640 Books and Periodicals	65,180.14	43,453.43		108,633.57
650 Supplies & Fees – Technology Related	3,052.80	2,035.20	40,355.71	45,443.71
Total Supplies	\$122,505.02	\$81,670.02	\$57,860.37	\$262,035.41
700 <u>Property</u>				
752 Capital Equipment – Original and Additional	15,424.82	10,283.22		25,708.04
Total Property	\$15,424.82	\$10,283.22		\$25,708.04
Total 1200 Special Programs – Elementary / Secondary	\$7,588,156.80	\$5,056,946.21	\$1,204,951.71	\$13,850,054.72

LEA : 123466403     Pottstown SD

Printed 1/4/2021 2:16:58 PM

General Fund (10)

1210 Life Skills Support

	Elementary	Secondary	Federal	Total
<b>100 <u>Personnel Services – Salaries</u></b>				
100 Personnel Services – Salaries	317,132.84	211,421.89	266,714.12	795,268.85
<b>Total Personnel Services – Salaries</b>	<b>\$317,132.84</b>	<b>\$211,421.89</b>	<b>\$266,714.12</b>	<b>\$795,268.85</b>
<b>200 <u>Personnel Services – Employee Benefits</u></b>				
210 Group Insurance – Contracted Provider	96,067.64	64,045.09	59,888.64	220,001.37
220 Social Security Contributions	23,121.50	15,414.33	19,419.25	57,955.08
230 PSERS Retirement Contributions	117,480.36	78,320.24	75,275.92	271,076.52
<b>Total Personnel Services – Employee Benefits</b>	<b>\$236,669.50</b>	<b>\$157,779.66</b>	<b>\$154,583.81</b>	<b>\$549,032.97</b>
<b>300 <u>Purchased Professional and Technical Services</u></b>				
322 Professional Educational Services – Ius	84,456.22	56,304.14		140,760.36
329 Professional Educational Services – Other	21,423.77	14,282.52	357,740.59	393,446.88
330 Other Professional Services	108,529.55	72,353.03		180,882.58
390 Other Purchased Professional and Technical Services	6,674.23	4,449.48		11,123.71
<b>Total Purchased Professional and Technical Services</b>	<b>\$221,083.77</b>	<b>\$147,389.17</b>	<b>\$357,740.59</b>	<b>\$726,213.53</b>
<b>500 <u>Other Purchased Services</u></b>				
510 Student Transportation Services	557.35	371.57		928.92
530 Communications	2,580.57	1,720.38		4,300.95
563 Tuition To Nonpublic Schools	16,579.73	11,053.15		27,632.88
568 Tuition To Private Residential Rehabilitative Institutions (PRRI) [In-State] and Detention Centers	5,518.87	3,679.25		9,198.12
580 Travel	337.15	224.76	123.70	685.61
<b>Total Other Purchased Services</b>	<b>\$25,573.67</b>	<b>\$17,049.11</b>	<b>\$123.70</b>	<b>\$42,746.48</b>
<b>600 <u>Supplies</u></b>				
610 General Supplies	16,061.37	10,707.58	17,504.66	44,273.61
640 Books and Periodicals	44,428.09	29,618.73		74,046.82
650 Supplies & Fees – Technology Related			40,355.71	40,355.71
<b>Total Supplies</b>	<b>\$60,489.46</b>	<b>\$40,326.31</b>	<b>\$57,860.37</b>	<b>\$158,676.14</b>
<b>Total 1210 Life Skills Support</b>	<b>\$860,949.24</b>	<b>\$573,966.14</b>	<b>\$837,022.59</b>	<b>\$2,271,937.97</b>

LEA : 123466403     Pottstown SD

Printed 1/4/2021 2:16:58 PM

General Fund (10)				
1220 Sensory Support	<u>Elementary</u>	<u>Secondary</u>	<u>Federal</u>	<u>Total</u>
300 <u>Purchased Professional and Technical Services</u>				
322 Professional Educational Services – Ius	197,676.10	131,784.07		329,460.17
329 Professional Educational Services – Other	68,710.40	45,806.94		114,517.34
<b>Total Purchased Professional and Technical Services</b>	<b>\$266,386.50</b>	<b>\$177,591.01</b>		<b>\$443,977.51</b>
600 <u>Supplies</u>				
610 General Supplies	97.18	64.78		161.96
<b>Total Supplies</b>	<b>\$97.18</b>	<b>\$64.78</b>		<b>\$161.96</b>
<b>Total 1220 Sensory Support</b>	<b>\$266,483.68</b>	<b>\$177,655.79</b>		<b>\$444,139.47</b>

LEA : 123466403     Pottstown SD

Printed 1/4/2021 2:16:58 PM

General Fund (10)

1230 Emotional Support

	Elementary	Secondary	Federal	Total
<b>100 <u>Personnel Services – Salaries</u></b>				
100 Personnel Services – Salaries	565,336.55	376,891.04	96,015.99	1,038,243.58
<b>Total Personnel Services – Salaries</b>	<b>\$565,336.55</b>	<b>\$376,891.04</b>	<b>\$96,015.99</b>	<b>\$1,038,243.58</b>
<b>200 <u>Personnel Services – Employee Benefits</u></b>				
210 Group Insurance – Contracted Provider	119,828.21	79,885.48	17,270.75	216,984.44
220 Social Security Contributions	41,670.95	27,780.64	7,103.90	76,555.49
230 PSERS Retirement Contributions	198,977.71	132,651.80	24,249.86	355,879.37
<b>Total Personnel Services – Employee Benefits</b>	<b>\$360,476.87</b>	<b>\$240,317.92</b>	<b>\$48,624.51</b>	<b>\$649,419.30</b>
<b>300 <u>Purchased Professional and Technical Services</u></b>				
322 Professional Educational Services – Ius	364,053.73	242,702.49		606,756.22
329 Professional Educational Services – Other	15,028.92	10,019.28		25,048.20
<b>Total Purchased Professional and Technical Services</b>	<b>\$379,082.65</b>	<b>\$252,721.77</b>		<b>\$631,804.42</b>
<b>500 <u>Other Purchased Services</u></b>				
561 Tuition To Other School Districts Within the State	13,625.65	9,083.76		22,709.41
563 Tuition To Nonpublic Schools	1,180,129.20	786,752.80		1,966,882.00
580 Travel	173.45	115.63		289.08
<b>Total Other Purchased Services</b>	<b>\$1,193,928.30</b>	<b>\$795,952.19</b>		<b>\$1,989,880.49</b>
<b>600 <u>Supplies</u></b>				
610 General Supplies	25,749.85	17,166.57		42,916.42
650 Supplies & Fees – Technology Related	3,052.80	2,035.20		5,088.00
<b>Total Supplies</b>	<b>\$28,802.65</b>	<b>\$19,201.77</b>		<b>\$48,004.42</b>
<b>700 <u>Property</u></b>				
752 Capital Equipment – Original and Additional	1,799.95	1,199.97		2,999.92
<b>Total Property</b>	<b>\$1,799.95</b>	<b>\$1,199.97</b>		<b>\$2,999.92</b>
<b>Total 1230 Emotional Support</b>	<b>\$2,529,426.97</b>	<b>\$1,686,284.66</b>	<b>\$144,640.50</b>	<b>\$4,360,352.13</b>



LEA : 123466403     Pottstown SD

Printed 1/4/2021 2:16:58 PM

General Fund (10)

1240 Academic Support

	Elementary	Secondary	Federal	Total
<b>100 Personnel Services – Salaries</b>				
100 Personnel Services – Salaries	1,229,454.15	819,636.10	137,775.15	2,186,865.40
<b>Total Personnel Services – Salaries</b>	<b>\$1,229,454.15</b>	<b>\$819,636.10</b>	<b>\$137,775.15</b>	<b>\$2,186,865.40</b>
<b>200 Personnel Services – Employee Benefits</b>				
210 Group Insurance – Contracted Provider	424,433.17	282,955.44	31,183.86	738,572.47
220 Social Security Contributions	88,777.62	59,185.08	10,079.09	158,041.79
230 PSERS Retirement Contributions	424,821.60	283,214.41	34,541.52	742,577.53
<b>Total Personnel Services – Employee Benefits</b>	<b>\$938,032.39</b>	<b>\$625,354.93</b>	<b>\$75,804.47</b>	<b>\$1,639,191.79</b>
<b>300 Purchased Professional and Technical Services</b>				
322 Professional Educational Services – Ius	60,944.56	40,629.71		101,574.27
329 Professional Educational Services – Other	22,800.00	15,200.00		38,000.00
390 Other Purchased Professional and Technical Services	228.00	152.00		380.00
<b>Total Purchased Professional and Technical Services</b>	<b>\$83,972.56</b>	<b>\$55,981.71</b>		<b>\$139,954.27</b>
<b>500 Other Purchased Services</b>				
530 Communications	1,335.00	890.00		2,225.00
563 Tuition To Nonpublic Schools	42,182.40	28,121.60		70,304.00
580 Travel	9.92	6.61		16.53
<b>Total Other Purchased Services</b>	<b>\$43,527.32</b>	<b>\$29,018.21</b>		<b>\$72,545.53</b>
<b>600 Supplies</b>				
610 General Supplies	12,261.69	8,174.46		20,436.15
640 Books and Periodicals	20,752.05	13,834.70		34,586.75
<b>Total Supplies</b>	<b>\$33,013.74</b>	<b>\$22,009.16</b>		<b>\$55,022.90</b>
<b>700 Property</b>				
752 Capital Equipment – Original and Additional	13,624.87	9,083.25		22,708.12
<b>Total Property</b>	<b>\$13,624.87</b>	<b>\$9,083.25</b>		<b>\$22,708.12</b>
<b>Total 1240 Academic Support</b>	<b>\$2,341,625.03</b>	<b>\$1,561,083.36</b>	<b>\$213,579.62</b>	<b>\$4,116,288.01</b>

LEA : 123466403     Pottstown SD

Printed 1/4/2021 2:16:58 PM

General Fund (10)

1241 Learning Support – Public	Elementary	Secondary	Federal	Total
100 <u>Personnel Services – Salaries</u>				
100 Personnel Services – Salaries	1,176,954.22	784,636.15	137,775.15	2,099,365.52
<b>Total Personnel Services – Salaries</b>	<b>\$1,176,954.22</b>	<b>\$784,636.15</b>	<b>\$137,775.15</b>	<b>\$2,099,365.52</b>
200 <u>Personnel Services – Employee Benefits</u>				
210 Group Insurance – Contracted Provider	413,522.91	275,681.94	31,183.86	720,388.71
220 Social Security Contributions	84,919.58	56,613.06	10,079.09	151,611.73
230 PSERS Retirement Contributions	406,806.04	271,204.03	34,541.52	712,551.59
<b>Total Personnel Services – Employee Benefits</b>	<b>\$905,248.53</b>	<b>\$603,499.03</b>	<b>\$75,804.47</b>	<b>\$1,584,552.03</b>
300 <u>Purchased Professional and Technical Services</u>				
322 Professional Educational Services – Ius	60,944.56	40,629.71		101,574.27
<b>Total Purchased Professional and Technical Services</b>	<b>\$60,944.56</b>	<b>\$40,629.71</b>		<b>\$101,574.27</b>
500 <u>Other Purchased Services</u>				
530 Communications	1,335.00	890.00		2,225.00
563 Tuition To Nonpublic Schools	42,182.40	28,121.60		70,304.00
580 Travel	9.92	6.61		16.53
<b>Total Other Purchased Services</b>	<b>\$43,527.32</b>	<b>\$29,018.21</b>		<b>\$72,545.53</b>
600 <u>Supplies</u>				
610 General Supplies	11,526.30	7,684.20		19,210.50
640 Books and Periodicals	20,752.05	13,834.70		34,586.75
<b>Total Supplies</b>	<b>\$32,278.35</b>	<b>\$21,518.90</b>		<b>\$53,797.25</b>
700 <u>Property</u>				
752 Capital Equipment – Original and Additional	13,624.87	9,083.25		22,708.12
<b>Total Property</b>	<b>\$13,624.87</b>	<b>\$9,083.25</b>		<b>\$22,708.12</b>
<b>Total 1241 Learning Support – Public</b>	<b>\$2,232,577.85</b>	<b>\$1,488,385.25</b>	<b>\$213,579.62</b>	<b>\$3,934,542.72</b>

LEA : 123466403     Pottstown SD

Printed 1/4/2021 2:16:58 PM

General Fund (10)				
1243 Gifted Support	<u>Elementary</u>	<u>Secondary</u>	<u>Federal</u>	<u>Total</u>
100 <u>Personnel Services – Salaries</u>				
100 Personnel Services – Salaries	52,499.93	34,999.95		87,499.88
<b>Total Personnel Services – Salaries</b>	<b>\$52,499.93</b>	<b>\$34,999.95</b>		<b>\$87,499.88</b>
200 <u>Personnel Services – Employee Benefits</u>				
210 Group Insurance – Contracted Provider	10,910.26	7,273.50		18,183.76
220 Social Security Contributions	3,858.04	2,572.02		6,430.06
230 PSERS Retirement Contributions	18,015.56	12,010.38		30,025.94
<b>Total Personnel Services – Employee Benefits</b>	<b>\$32,783.86</b>	<b>\$21,855.90</b>		<b>\$54,639.76</b>
300 <u>Purchased Professional and Technical Services</u>				
329 Professional Educational Services – Other	22,800.00	15,200.00		38,000.00
390 Other Purchased Professional and Technical Services	228.00	152.00		380.00
<b>Total Purchased Professional and Technical Services</b>	<b>\$23,028.00</b>	<b>\$15,352.00</b>		<b>\$38,380.00</b>
600 <u>Supplies</u>				
610 General Supplies	735.39	490.26		1,225.65
<b>Total Supplies</b>	<b>\$735.39</b>	<b>\$490.26</b>		<b>\$1,225.65</b>
<b>Total 1243 Gifted Support</b>	<b>\$109,047.18</b>	<b>\$72,698.11</b>		<b>\$181,745.29</b>

LEA : 123466403     Pottstown SD

Printed 1/4/2021 2:16:58 PM

General Fund (10)

1260 Physical Support

	<u>Elementary</u>	<u>Secondary</u>	<u>Federal</u>	<u>Total</u>
300 <u>Purchased Professional and Technical Services</u>				
330 Other Professional Services			9,709.00	9,709.00
Total Purchased Professional and Technical Services			\$9,709.00	\$9,709.00
Total 1260 Physical Support			\$9,709.00	\$9,709.00

LEA : 123466403     Pottstown SD

Printed 1/4/2021 2:16:58 PM

General Fund (10)				
1270 Multi-Handicapped Support	<u>Elementary</u>	<u>Secondary</u>	<u>Federal</u>	<u>Total</u>
300 <u>Purchased Professional and Technical Services</u>				
322 Professional Educational Services – lus	240,417.39	160,278.26		400,695.65
Total Purchased Professional and Technical Services	\$240,417.39	\$160,278.26		\$400,695.65
500 <u>Other Purchased Services</u>				
563 Tuition To Nonpublic Schools	62,190.00	41,460.00		103,650.00
Total Other Purchased Services	\$62,190.00	\$41,460.00		\$103,650.00
600 <u>Supplies</u>				
610 General Supplies	101.99	68.00		169.99
Total Supplies	\$101.99	\$68.00		\$169.99
Total 1270 Multi-Handicapped Support	\$302,709.38	\$201,806.26		\$504,515.64

LEA : 123466403     Pottstown SD

Printed 1/4/2021 2:16:58 PM

General Fund (10)

1280 Early Intervention Support

	<u>Elementary</u>	<u>Secondary</u>	<u>Federal</u>	<u>Total</u>
300 <u>Purchased Professional and Technical Services</u>				
322 Professional Educational Services – lus	2,737.50			2,737.50
Total Purchased Professional and Technical Services	\$2,737.50			\$2,737.50
Total 1280 Early Intervention Support	\$2,737.50			\$2,737.50

LEA : 123466403     Pottstown SD

Printed 1/4/2021 2:16:58 PM

General Fund (10)				
1290 Special Programs - Other Support	<u>Elementary</u>	<u>Secondary</u>	<u>Federal</u>	<u>Total</u>
100 <u>Personnel Services – Salaries</u>				
100 Personnel Services – Salaries	2,711.88	1,807.92		4,519.80
<b>Total Personnel Services – Salaries</b>	<b>\$2,711.88</b>	<b>\$1,807.92</b>		<b>\$4,519.80</b>
200 <u>Personnel Services – Employee Benefits</u>				
220 Social Security Contributions	175.03	116.68		291.71
230 PSERS Retirement Contributions	796.45	530.97		1,327.42
<b>Total Personnel Services – Employee Benefits</b>	<b>\$971.48</b>	<b>\$647.65</b>		<b>\$1,619.13</b>
500 <u>Other Purchased Services</u>				
562 Tuition To Pennsylvania Charter Schools	971,096.40	647,397.60		1,618,494.00
567 Tuition To Approved Private Schools (APS) and PA Chartered Schools for the Deaf and Blind	308,410.25	205,606.83		514,017.08
594 IU Payment By Withholding for Institutionalized Children's Programs – Special Classes	1,034.99	690.00		1,724.99
<b>Total Other Purchased Services</b>	<b>\$1,280,541.64</b>	<b>\$853,694.43</b>		<b>\$2,134,236.07</b>
<b>Total 1290 Special Programs - Other Support</b>	<b>\$1,284,225.00</b>	<b>\$856,150.00</b>		<b>\$2,140,375.00</b>

LEA : 123466403     Pottstown SD

Printed 1/4/2021 2:16:58 PM

General Fund (10)				
1300 Vocational Education	<u>Elementary</u>	<u>Secondary</u>	<u>Federal</u>	<u>Total</u>
100 <u>Personnel Services – Salaries</u>				
100 Personnel Services – Salaries		620,841.42	17,017.50	637,858.92
<b>Total Personnel Services – Salaries</b>		<b>\$620,841.42</b>	<b>\$17,017.50</b>	<b>\$637,858.92</b>
200 <u>Personnel Services – Employee Benefits</u>				
210 Group Insurance – Contracted Provider		156,862.35		156,862.35
220 Social Security Contributions		45,053.43	1,301.88	46,355.31
230 PSERS Retirement Contributions		218,751.46	1,750.60	220,502.06
<b>Total Personnel Services – Employee Benefits</b>		<b>\$420,667.24</b>	<b>\$3,052.48</b>	<b>\$423,719.72</b>
300 <u>Purchased Professional and Technical Services</u>				
322 Professional Educational Services – Ius		7,395.62		7,395.62
390 Other Purchased Professional and Technical Services			750.00	750.00
<b>Total Purchased Professional and Technical Services</b>		<b>\$7,395.62</b>	<b>\$750.00</b>	<b>\$8,145.62</b>
400 <u>Purchased Property Services</u>				
430 Repairs and Maintenance Services		61.00		61.00
<b>Total Purchased Property Services</b>		<b>\$61.00</b>		<b>\$61.00</b>
500 <u>Other Purchased Services</u>				
561 Tuition To Other School Districts Within the State		94.26		94.26
580 Travel		3,000.00	1,431.82	4,431.82
<b>Total Other Purchased Services</b>		<b>\$3,094.26</b>	<b>\$1,431.82</b>	<b>\$4,526.08</b>
600 <u>Supplies</u>				
610 General Supplies		33,489.67	45,688.56	79,178.23
640 Books and Periodicals		8,067.36	3,338.64	11,406.00
<b>Total Supplies</b>		<b>\$41,557.03</b>	<b>\$49,027.20</b>	<b>\$90,584.23</b>
700 <u>Property</u>				
752 Capital Equipment – Original and Additional		34,721.16	61,601.72	96,322.88
<b>Total Property</b>		<b>\$34,721.16</b>	<b>\$61,601.72</b>	<b>\$96,322.88</b>
<b>Total 1300 Vocational Education</b>		<b>\$1,128,337.73</b>	<b>\$132,880.72</b>	<b>\$1,261,218.45</b>



LEA : 123466403     Pottstown SD

Printed 1/4/2021 2:16:58 PM

General Fund (10)				
1400 Other Instructional Programs – Elementary / Secondary	<u>Elementary</u>	<u>Secondary</u>	<u>Federal</u>	<u>Total</u>
100 <u>Personnel Services – Salaries</u>				
100 Personnel Services – Salaries	200,273.06	133,515.38	279,376.00	613,164.44
<b>Total Personnel Services – Salaries</b>	<b>\$200,273.06</b>	<b>\$133,515.38</b>	<b>\$279,376.00</b>	<b>\$613,164.44</b>
200 <u>Personnel Services – Employee Benefits</u>				
210 Group Insurance – Contracted Provider	39,166.32	26,110.89	6,970.63	72,247.84
220 Social Security Contributions	14,961.35	9,974.23	20,637.34	45,572.92
230 PSERS Retirement Contributions	110,399.75	73,599.83	20,849.66	204,849.24
<b>Total Personnel Services – Employee Benefits</b>	<b>\$164,527.42</b>	<b>\$109,684.95</b>	<b>\$48,457.63</b>	<b>\$322,670.00</b>
300 <u>Purchased Professional and Technical Services</u>				
322 Professional Educational Services – Ius	44,088.32	29,392.22		73,480.54
323 Professional Educational Services – Other Educational Agencies	8,936.46	5,957.64		14,894.10
330 Other Professional Services			5,789.30	5,789.30
390 Other Purchased Professional and Technical Services	14,382.50	9,588.33	132,200.71	156,171.54
<b>Total Purchased Professional and Technical Services</b>	<b>\$67,407.28</b>	<b>\$44,938.19</b>	<b>\$137,990.01</b>	<b>\$250,335.48</b>
400 <u>Purchased Property Services</u>				
430 Repairs and Maintenance Services	172.20	114.80		287.00
460 Extermination Services	(416.45)	(277.64)		(694.09)
<b>Total Purchased Property Services</b>	<b>(\$244.25)</b>	<b>(\$162.84)</b>		<b>(\$407.09)</b>
500 <u>Other Purchased Services</u>				
530 Communications	242.57	161.71	677.19	1,081.47
561 Tuition To Other School Districts Within the State	155,609.09	103,739.39		259,348.48
563 Tuition To Nonpublic Schools	145,131.61	96,754.40		241,886.01
580 Travel	1,057.84	705.22	5,826.51	7,589.57
<b>Total Other Purchased Services</b>	<b>\$302,041.11</b>	<b>\$201,360.72</b>	<b>\$6,503.70</b>	<b>\$509,905.53</b>
600 <u>Supplies</u>				
610 General Supplies	2,137.46	1,424.97	254,854.92	258,417.35
640 Books and Periodicals			239.93	239.93
650 Supplies & Fees – Technology Related	171,703.20	114,468.80		286,172.00
<b>Total Supplies</b>	<b>\$173,840.66</b>	<b>\$115,893.77</b>	<b>\$255,094.85</b>	<b>\$544,829.28</b>
800 <u>Other Objects</u>				
810 Dues and Fees	582.00	388.00		970.00
<b>Total Other Objects</b>	<b>\$582.00</b>	<b>\$388.00</b>		<b>\$970.00</b>
<b>Total 1400 Other Instructional Programs – Elementary / Secondary</b>	<b>\$908,427.28</b>	<b>\$605,618.17</b>	<b>\$727,422.19</b>	<b>\$2,241,467.64</b>

LEA : 123466403     Pottstown SD

Printed 1/4/2021 2:16:58 PM

General Fund (10)				
1420 Summer School	<u>Elementary</u>	<u>Secondary</u>	<u>Federal</u>	<u>Total</u>
100 <u>Personnel Services – Salaries</u>				
100 Personnel Services – Salaries			63,656.73	63,656.73
<b>Total Personnel Services – Salaries</b>			<b>\$63,656.73</b>	<b>\$63,656.73</b>
200 <u>Personnel Services – Employee Benefits</u>				
220 Social Security Contributions			4,869.34	4,869.34
230 PSERS Retirement Contributions	12,055.40	8,036.93	1,720.33	21,812.66
<b>Total Personnel Services – Employee Benefits</b>	<b>\$12,055.40</b>	<b>\$8,036.93</b>	<b>\$6,589.67</b>	<b>\$26,682.00</b>
300 <u>Purchased Professional and Technical Services</u>				
390 Other Purchased Professional and Technical Services			1,080.03	1,080.03
<b>Total Purchased Professional and Technical Services</b>			<b>\$1,080.03</b>	<b>\$1,080.03</b>
500 <u>Other Purchased Services</u>				
580 Travel			1,317.89	1,317.89
<b>Total Other Purchased Services</b>			<b>\$1,317.89</b>	<b>\$1,317.89</b>
<b>Total 1420 Summer School</b>	<b>\$12,055.40</b>	<b>\$8,036.93</b>	<b>\$72,644.32</b>	<b>\$92,736.65</b>

LEA : 123466403     Pottstown SD

Printed 1/4/2021 2:16:58 PM

General Fund (10)				
1430 Homebound Instruction	<u>Elementary</u>	<u>Secondary</u>	<u>Federal</u>	<u>Total</u>
100 <u>Personnel Services – Salaries</u>				
100 Personnel Services – Salaries	255.60	170.40		426.00
<b>Total Personnel Services – Salaries</b>	<b>\$255.60</b>	<b>\$170.40</b>		<b>\$426.00</b>
200 <u>Personnel Services – Employee Benefits</u>				
220 Social Security Contributions	18.86	12.57		31.43
230 PSERS Retirement Contributions	79.93	53.29		133.22
<b>Total Personnel Services – Employee Benefits</b>	<b>\$98.79</b>	<b>\$65.86</b>		<b>\$164.65</b>
300 <u>Purchased Professional and Technical Services</u>				
323 Professional Educational Services – Other Educational Agencies	8,852.46	5,901.64		14,754.10
<b>Total Purchased Professional and Technical Services</b>	<b>\$8,852.46</b>	<b>\$5,901.64</b>		<b>\$14,754.10</b>
500 <u>Other Purchased Services</u>				
561 Tuition To Other School Districts Within the State	313.15	208.76		521.91
563 Tuition To Nonpublic Schools	1,917.60	1,278.40		3,196.00
<b>Total Other Purchased Services</b>	<b>\$2,230.75</b>	<b>\$1,487.16</b>		<b>\$3,717.91</b>
<b>Total 1430 Homebound Instruction</b>	<b>\$11,437.60</b>	<b>\$7,625.06</b>		<b>\$19,062.66</b>

LEA : 123466403     Pottstown SD

Printed 1/4/2021 2:16:58 PM

General Fund (10)				
1440 Alternative Regular Education Programs	<u>Elementary</u>	<u>Secondary</u>	<u>Federal</u>	<u>Total</u>
100 <u>Personnel Services – Salaries</u>				
100 Personnel Services – Salaries	200,766.88	133,844.59		334,611.47
<b>Total Personnel Services – Salaries</b>	<b>\$200,766.88</b>	<b>\$133,844.59</b>		<b>\$334,611.47</b>
200 <u>Personnel Services – Employee Benefits</u>				
210 Group Insurance – Contracted Provider	39,154.42	26,102.95		65,257.37
220 Social Security Contributions	14,904.89	9,936.59		24,841.48
230 PSERS Retirement Contributions	69,792.52	46,528.34		116,320.86
<b>Total Personnel Services – Employee Benefits</b>	<b>\$123,851.83</b>	<b>\$82,567.88</b>		<b>\$206,419.71</b>
300 <u>Purchased Professional and Technical Services</u>				
322 Professional Educational Services – Ius	44,088.32	29,392.22		73,480.54
323 Professional Educational Services – Other Educational Agencies	84.00	56.00		140.00
<b>Total Purchased Professional and Technical Services</b>	<b>\$44,172.32</b>	<b>\$29,448.22</b>		<b>\$73,620.54</b>
400 <u>Purchased Property Services</u>				
430 Repairs and Maintenance Services	172.20	114.80		287.00
460 Extermination Services	(416.45)	(277.64)		(694.09)
<b>Total Purchased Property Services</b>	<b>(\$244.25)</b>	<b>(\$162.84)</b>		<b>(\$407.09)</b>
500 <u>Other Purchased Services</u>				
561 Tuition To Other School Districts Within the State	155,295.94	103,530.63		258,826.57
563 Tuition To Nonpublic Schools	143,214.01	95,476.00		238,690.01
580 Travel	1,057.84	705.22		1,763.06
<b>Total Other Purchased Services</b>	<b>\$299,567.79</b>	<b>\$199,711.85</b>		<b>\$499,279.64</b>
600 <u>Supplies</u>				
610 General Supplies	1,856.16	1,237.44		3,093.60
650 Supplies & Fees – Technology Related	171,703.20	114,468.80		286,172.00
<b>Total Supplies</b>	<b>\$173,559.36</b>	<b>\$115,706.24</b>		<b>\$289,265.60</b>
800 <u>Other Objects</u>				
810 Dues and Fees	582.00	388.00		970.00
<b>Total Other Objects</b>	<b>\$582.00</b>	<b>\$388.00</b>		<b>\$970.00</b>
<b>Total 1440 Alternative Regular Education Programs</b>	<b>\$842,255.93</b>	<b>\$561,503.94</b>		<b>\$1,403,759.87</b>

LEA : 123466403     Pottstown SD

Printed 1/4/2021 2:16:58 PM

General Fund (10)

1441 Adjudicated / Court-Placed Programs	Elementary	Secondary	Federal	Total
300 <u>Purchased Professional and Technical Services</u>				
322 Professional Educational Services – Ius	44,088.32	29,392.22		73,480.54
323 Professional Educational Services – Other Educational Agencies	84.00	56.00		140.00
<b>Total Purchased Professional and Technical Services</b>	<b>\$44,172.32</b>	<b>\$29,448.22</b>		<b>\$73,620.54</b>
500 <u>Other Purchased Services</u>				
561 Tuition To Other School Districts Within the State	155,295.94	103,530.63		258,826.57
563 Tuition To Nonpublic Schools	20,385.00	13,590.00		33,975.00
<b>Total Other Purchased Services</b>	<b>\$175,680.94</b>	<b>\$117,120.63</b>		<b>\$292,801.57</b>
<b>Total 1441 Adjudicated / Court-Placed Programs</b>	<b>\$219,853.26</b>	<b>\$146,568.85</b>		<b>\$366,422.11</b>

LEA : 123466403     Pottstown SD

Printed 1/4/2021 2:16:58 PM

General Fund (10)				
1442 Alternative Education Programs	<u>Elementary</u>	<u>Secondary</u>	<u>Federal</u>	<u>Total</u>
100 <u>Personnel Services – Salaries</u>				
100 Personnel Services – Salaries	200,766.88	133,844.59		334,611.47
<b>Total Personnel Services – Salaries</b>	<b>\$200,766.88</b>	<b>\$133,844.59</b>		<b>\$334,611.47</b>
200 <u>Personnel Services – Employee Benefits</u>				
210 Group Insurance – Contracted Provider	39,154.42	26,102.95		65,257.37
220 Social Security Contributions	14,904.89	9,936.59		24,841.48
230 PSERS Retirement Contributions	69,792.52	46,528.34		116,320.86
<b>Total Personnel Services – Employee Benefits</b>	<b>\$123,851.83</b>	<b>\$82,567.88</b>		<b>\$206,419.71</b>
400 <u>Purchased Property Services</u>				
430 Repairs and Maintenance Services	172.20	114.80		287.00
460 Extermination Services	(416.45)	(277.64)		(694.09)
<b>Total Purchased Property Services</b>	<b>(\$244.25)</b>	<b>(\$162.84)</b>		<b>(\$407.09)</b>
500 <u>Other Purchased Services</u>				
563 Tuition To Nonpublic Schools	122,829.01	81,886.00		204,715.01
580 Travel	1,057.84	705.22		1,763.06
<b>Total Other Purchased Services</b>	<b>\$123,886.85</b>	<b>\$82,591.22</b>		<b>\$206,478.07</b>
600 <u>Supplies</u>				
610 General Supplies	1,856.16	1,237.44		3,093.60
650 Supplies & Fees – Technology Related	171,703.20	114,468.80		286,172.00
<b>Total Supplies</b>	<b>\$173,559.36</b>	<b>\$115,706.24</b>		<b>\$289,265.60</b>
800 <u>Other Objects</u>				
810 Dues and Fees	582.00	388.00		970.00
<b>Total Other Objects</b>	<b>\$582.00</b>	<b>\$388.00</b>		<b>\$970.00</b>
<b>Total 1442 Alternative Education Programs</b>	<b>\$622,402.67</b>	<b>\$414,935.09</b>		<b>\$1,037,337.76</b>

LEA : 123466403     Pottstown SD

Printed 1/4/2021 2:16:58 PM

General Fund (10)				
1450 Instructional Programs Outside the Established School Day	<u>Elementary</u>	<u>Secondary</u>	<u>Federal</u>	<u>Total</u>
100 <u>Personnel Services – Salaries</u>				
100 Personnel Services – Salaries	(749.42)	(499.61)	215,719.27	214,470.24
<b>Total Personnel Services – Salaries</b>	<b>(\$749.42)</b>	<b>(\$499.61)</b>	<b>\$215,719.27</b>	<b>\$214,470.24</b>
200 <u>Personnel Services – Employee Benefits</u>				
210 Group Insurance – Contracted Provider	11.90	7.94	6,970.63	6,990.47
220 Social Security Contributions	37.60	25.07	15,768.00	15,830.67
230 PSERS Retirement Contributions	28,471.90	18,981.27	19,129.33	66,582.50
<b>Total Personnel Services – Employee Benefits</b>	<b>\$28,521.40</b>	<b>\$19,014.28</b>	<b>\$41,867.96</b>	<b>\$89,403.64</b>
300 <u>Purchased Professional and Technical Services</u>				
330 Other Professional Services			5,789.30	5,789.30
390 Other Purchased Professional and Technical Services	14,382.50	9,588.33	131,120.68	155,091.51
<b>Total Purchased Professional and Technical Services</b>	<b>\$14,382.50</b>	<b>\$9,588.33</b>	<b>\$136,909.98</b>	<b>\$160,880.81</b>
500 <u>Other Purchased Services</u>				
530 Communications	242.57	161.71	677.19	1,081.47
580 Travel			4,508.62	4,508.62
<b>Total Other Purchased Services</b>	<b>\$242.57</b>	<b>\$161.71</b>	<b>\$5,185.81</b>	<b>\$5,590.09</b>
600 <u>Supplies</u>				
610 General Supplies	281.30	187.53	254,854.92	255,323.75
640 Books and Periodicals			239.93	239.93
<b>Total Supplies</b>	<b>\$281.30</b>	<b>\$187.53</b>	<b>\$255,094.85</b>	<b>\$255,563.68</b>
<b>Total 1450 Instructional Programs Outside the Established School Day</b>	<b>\$42,678.35</b>	<b>\$28,452.24</b>	<b>\$654,777.87</b>	<b>\$725,908.46</b>

LEA : 123466403     Pottstown SD

Printed 1/4/2021 2:16:58 PM

General Fund (10)				
1800 Pre-Kindergarten	<u>Elementary</u>	<u>Secondary</u>	<u>Federal</u>	<u>Total</u>
100 <u>Personnel Services – Salaries</u>				
100 Personnel Services – Salaries				907,154.85
Total Personnel Services – Salaries				\$907,154.85
200 <u>Personnel Services – Employee Benefits</u>				
210 Group Insurance – Contracted Provider				213,902.93
220 Social Security Contributions				63,486.24
230 PSERS Retirement Contributions				292,433.76
Total Personnel Services – Employee Benefits				\$569,822.93
300 <u>Purchased Professional and Technical Services</u>				
329 Professional Educational Services – Other				36,233.26
390 Other Purchased Professional and Technical Services				70,678.91
Total Purchased Professional and Technical Services				\$106,912.17
400 <u>Purchased Property Services</u>				
410 Cleaning Services				1,567.15
430 Repairs and Maintenance Services				1,100.00
Total Purchased Property Services				\$2,667.15
500 <u>Other Purchased Services</u>				
510 Student Transportation Services				1,243.00
530 Communications				1,791.88
549 Other Advertising/Public Relations				14.38
580 Travel				1,032.41
Total Other Purchased Services				\$4,081.67
600 <u>Supplies</u>				
610 General Supplies				57,965.12
Total Supplies				\$57,965.12
800 <u>Other Objects</u>				
810 Dues and Fees				120.00
890 Miscellaneous Expenditures				926,100.00
Total Other Objects				\$926,220.00
Total 1800 Pre-Kindergarten				\$2,574,823.89



LEA : 123466403     Pottstown SD

Printed 1/4/2021 2:16:58 PM

General Fund (10)				
1801 Pre-K Instruction	<u>Elementary</u>	<u>Secondary</u>	<u>Federal</u>	<u>Total</u>
100 <u>Personnel Services – Salaries</u>				
100 Personnel Services – Salaries				445,532.14
Total Personnel Services – Salaries				\$445,532.14
200 <u>Personnel Services – Employee Benefits</u>				
210 Group Insurance – Contracted Provider				91,406.48
220 Social Security Contributions				33,049.80
230 PSERS Retirement Contributions				150,644.78
Total Personnel Services – Employee Benefits				\$275,101.06
300 <u>Purchased Professional and Technical Services</u>				
390 Other Purchased Professional and Technical Services				8,660.00
Total Purchased Professional and Technical Services				\$8,660.00
400 <u>Purchased Property Services</u>				
430 Repairs and Maintenance Services				1,100.00
Total Purchased Property Services				\$1,100.00
500 <u>Other Purchased Services</u>				
510 Student Transportation Services				1,243.00
530 Communications				1,554.57
580 Travel				389.35
Total Other Purchased Services				\$3,186.92
600 <u>Supplies</u>				
610 General Supplies				537.40
Total Supplies				\$537.40
800 <u>Other Objects</u>				
810 Dues and Fees				120.00
Total Other Objects				\$120.00
Total 1801 Pre-K Instruction				\$734,237.52

LEA : 123466403     Pottstown SD

Printed 1/4/2021 2:16:58 PM

General Fund (10)				
1802 Pre-K Administrative Support	<u>Elementary</u>	<u>Secondary</u>	<u>Federal</u>	<u>Total</u>
100 <u>Personnel Services – Salaries</u>				
100 Personnel Services – Salaries				461,622.71
Total Personnel Services – Salaries				\$461,622.71
200 <u>Personnel Services – Employee Benefits</u>				
210 Group Insurance – Contracted Provider				122,496.45
220 Social Security Contributions				30,436.44
230 PSERS Retirement Contributions				141,788.98
Total Personnel Services – Employee Benefits				\$294,721.87
300 <u>Purchased Professional and Technical Services</u>				
390 Other Purchased Professional and Technical Services				27,407.74
Total Purchased Professional and Technical Services				\$27,407.74
400 <u>Purchased Property Services</u>				
410 Cleaning Services				1,567.15
Total Purchased Property Services				\$1,567.15
500 <u>Other Purchased Services</u>				
530 Communications				237.31
549 Other Advertising/Public Relations				14.38
Total Other Purchased Services				\$251.69
600 <u>Supplies</u>				
610 General Supplies				56,143.88
Total Supplies				\$56,143.88
Total 1802 Pre-K Administrative Support				\$841,715.04

LEA : 123466403     Pottstown SD

Printed 1/4/2021 2:16:58 PM

General Fund (10)					
1806 Pre-K Professional Development		<u>Elementary</u>	<u>Secondary</u>	<u>Federal</u>	<u>Total</u>
300	<u>Purchased Professional and Technical Services</u>				
329	Professional Educational Services – Other				36,233.26
390	Other Purchased Professional and Technical Services				34,611.17
<b>Total Purchased Professional and Technical Services</b>					<b>\$70,844.43</b>
500	<u>Other Purchased Services</u>				
580	Travel				643.06
<b>Total Other Purchased Services</b>					<b>\$643.06</b>
600	<u>Supplies</u>				
610	General Supplies				1,283.84
<b>Total Supplies</b>					<b>\$1,283.84</b>
<b>Total 1806 Pre-K Professional Development</b>					<b>\$72,771.33</b>

LEA : 123466403     Pottstown SD

Printed 1/4/2021 2:16:58 PM

General Fund (10)				
1807 Pre-K Pass-Through Funds (Partners)	<u>Elementary</u>	<u>Secondary</u>	<u>Federal</u>	<u>Total</u>
800 <u>Other Objects</u>				
890 Miscellaneous Expenditures				926,100.00
Total Other Objects				\$926,100.00
Total 1807 Pre-K Pass-Through Funds (Partners)				\$926,100.00

LEA : 123466403     Pottstown SD

Printed 1/4/2021 2:17:18 PM

General Fund (10)

<b>2000 Support Services</b>		<b><u>Total</u></b>
<b>100 <u>Personnel Services – Salaries</u></b>		
100 Personnel Services – Salaries	6,736,726.98	
<b>Total Personnel Services – Salaries</b>	<b>\$6,736,726.98</b>	
<b>200 <u>Personnel Services – Employee Benefits</u></b>		
210 Group Insurance – Contracted Provider	1,284,869.56	
220 Social Security Contributions	497,627.79	
230 PSERS Retirement Contributions	2,280,236.74	
240 Tuition Reimbursement	44,321.63	
280 Other Post-Employment Benefits (OPEB)	16,041.45	
299 All Other Employee Benefits	10,000.00	
<b>Total Personnel Services – Employee Benefits</b>	<b>\$4,133,097.17</b>	
<b>300 <u>Purchased Professional and Technical Services</u></b>		
322 Professional Educational Services – Ius	113,500.00	
329 Professional Educational Services – Other	109,663.34	
330 Other Professional Services	728,376.66	
350 Security / Safety Services	388,378.45	
360 Employee Training and Development Services	7,299.66	
390 Other Purchased Professional and Technical Services	113,083.15	
<b>Total Purchased Professional and Technical Services</b>	<b>\$1,460,301.26</b>	
<b>400 <u>Purchased Property Services</u></b>		
410 Cleaning Services	205,241.88	
420 Utility Services	88,807.99	
430 Repairs and Maintenance Services	436,443.20	
440 Rentals	131,254.00	
460 Extermination Services	7,340.99	
490 Other Purchased Property Services	712.65	
<b>Total Purchased Property Services</b>	<b>\$869,800.71</b>	
<b>500 <u>Other Purchased Services</u></b>		
513 Contracted Carriers	1,547,374.34	
516 Student Transportation Services From the IU	385,072.88	
520 Insurance – General	226,230.02	
522 Automotive Liability Insurance	9,529.00	
523 General Property and Liability Insurance	27,636.00	
529 Other Insurance	8,939.00	
530 Communications	104,261.34	
549 Other Advertising/Public Relations	3,638.28	
580 Travel	5,997.81	
595 IU Payments By Withholding	17,163.69	
<b>Total Other Purchased Services</b>	<b>\$2,335,842.36</b>	
<b>600 <u>Supplies</u></b>		
610 General Supplies	967,313.48	
620 Energy	535,535.72	
640 Books and Periodicals	31,964.08	
650 Supplies & Fees – Technology Related	792,494.85	

LEA : 123466403     Pottstown SD

Printed 1/4/2021 2:17:18 PM

General Fund (10)

2000 Support Services

	<u>Total</u>
<b>Total Supplies</b>	<b>\$2,327,308.13</b>
<b>700 <u>Property</u></b>	
752 Capital Equipment – Original and Additional	61,952.09
762 Capitalized Equipment - Replacement	85,928.05
790 Other Property	54,277.16
<b>Total Property</b>	<b>\$202,157.30</b>
<b>800 <u>Other Objects</u></b>	
810 Dues and Fees	40,160.87
890 Miscellaneous Expenditures	1,264.02
<b>Total Other Objects</b>	<b>\$41,424.89</b>
<b>Total 2000 Support Services</b>	<b>\$18,106,658.80</b>

LEA : 123466403     Pottstown SD

Printed 1/4/2021 2:17:18 PM

General Fund (10)				
2100 Support Services – Students	<u>Elementary</u>	<u>Secondary</u>	<u>Federal</u>	<u>Total</u>
100 <u>Personnel Services – Salaries</u>				
100 Personnel Services – Salaries	690,534.33	460,356.22	26,074.36	1,254,491.19
<b>Total Personnel Services – Salaries</b>	<b>\$690,534.33</b>	<b>\$460,356.22</b>	<b>\$26,074.36</b>	<b>\$1,254,491.19</b>
200 <u>Personnel Services – Employee Benefits</u>				
210 Group Insurance – Contracted Provider	104,725.85	69,817.24	6,367.56	204,688.86
220 Social Security Contributions	51,381.11	34,254.08	1,928.00	93,320.35
230 PSERS Retirement Contributions	233,215.75	155,477.16	2,682.38	418,022.71
<b>Total Personnel Services – Employee Benefits</b>	<b>\$389,322.71</b>	<b>\$259,548.48</b>	<b>\$10,977.94</b>	<b>\$716,031.92</b>
300 <u>Purchased Professional and Technical Services</u>				
322 Professional Educational Services – Ius	5,676.00	3,784.00		9,460.00
329 Professional Educational Services – Other	13,213.02	8,808.69		22,964.88
330 Other Professional Services	108,681.30	72,454.20	11,600.17	192,735.67
390 Other Purchased Professional and Technical Services				650.00
<b>Total Purchased Professional and Technical Services</b>	<b>\$127,570.32</b>	<b>\$85,046.89</b>	<b>\$11,600.17</b>	<b>\$225,810.55</b>
400 <u>Purchased Property Services</u>				
440 Rentals	2,250.36	1,500.24		3,750.60
<b>Total Purchased Property Services</b>	<b>\$2,250.36</b>	<b>\$1,500.24</b>		<b>\$3,750.60</b>
500 <u>Other Purchased Services</u>				
530 Communications	553.81	369.20		923.01
580 Travel	405.27	270.18		1,775.45
<b>Total Other Purchased Services</b>	<b>\$959.08</b>	<b>\$639.38</b>		<b>\$2,698.46</b>
600 <u>Supplies</u>				
610 General Supplies	16,908.30	11,272.20		37,481.50
<b>Total Supplies</b>	<b>\$16,908.30</b>	<b>\$11,272.20</b>		<b>\$37,481.50</b>
800 <u>Other Objects</u>				
810 Dues and Fees	126.00	84.00	1,102.00	1,312.00
<b>Total Other Objects</b>	<b>\$126.00</b>	<b>\$84.00</b>	<b>\$1,102.00</b>	<b>\$1,312.00</b>
<b>Total 2100 Support Services – Students</b>	<b>\$1,227,671.10</b>	<b>\$818,447.41</b>	<b>\$49,754.47</b>	<b>\$2,241,576.22</b>

LEA : 123466403     Pottstown SD

Printed 1/4/2021 2:17:18 PM

General Fund (10)				
2110 Supervision of Student Services	<u>Elementary</u>	<u>Secondary</u>	<u>Federal</u>	<u>Total</u>
100 <u>Personnel Services – Salaries</u>				
100 Personnel Services – Salaries			26,074.36	26,074.36
<b>Total Personnel Services – Salaries</b>			<b>\$26,074.36</b>	<b>\$26,074.36</b>
200 <u>Personnel Services – Employee Benefits</u>				
210 Group Insurance – Contracted Provider			6,367.56	6,367.56
220 Social Security Contributions			1,928.00	1,928.00
230 PSERS Retirement Contributions	3,755.14	2,503.42	2,682.38	8,940.94
<b>Total Personnel Services – Employee Benefits</b>	<b>\$3,755.14</b>	<b>\$2,503.42</b>	<b>\$10,977.94</b>	<b>\$17,236.50</b>
400 <u>Purchased Property Services</u>				
440 Rentals	2,250.36	1,500.24		3,750.60
<b>Total Purchased Property Services</b>	<b>\$2,250.36</b>	<b>\$1,500.24</b>		<b>\$3,750.60</b>
500 <u>Other Purchased Services</u>				
530 Communications	553.81	369.20		923.01
580 Travel	193.29	128.86		322.15
<b>Total Other Purchased Services</b>	<b>\$747.10</b>	<b>\$498.06</b>		<b>\$1,245.16</b>
600 <u>Supplies</u>				
610 General Supplies	563.98	375.99		939.97
<b>Total Supplies</b>	<b>\$563.98</b>	<b>\$375.99</b>		<b>\$939.97</b>
<b>Total 2110 Supervision of Student Services</b>	<b>\$7,316.58</b>	<b>\$4,877.71</b>	<b>\$37,052.30</b>	<b>\$49,246.59</b>



LEA : 123466403     Pottstown SD

Printed 1/4/2021 2:17:18 PM

General Fund (10)				
2111 Supervision of Student Services – Head of Component	<u>Elementary</u>	<u>Secondary</u>	<u>Federal</u>	<u>Total</u>
100 <u>Personnel Services – Salaries</u>				
100 Personnel Services – Salaries			26,074.36	26,074.36
<b>Total Personnel Services – Salaries</b>			<b>\$26,074.36</b>	<b>\$26,074.36</b>
200 <u>Personnel Services – Employee Benefits</u>				
210 Group Insurance – Contracted Provider			6,367.56	6,367.56
220 Social Security Contributions			1,928.00	1,928.00
230 PSERS Retirement Contributions	3,755.14	2,503.42	2,682.38	8,940.94
<b>Total Personnel Services – Employee Benefits</b>	<b>\$3,755.14</b>	<b>\$2,503.42</b>	<b>\$10,977.94</b>	<b>\$17,236.50</b>
400 <u>Purchased Property Services</u>				
440 Rentals	2,250.36	1,500.24		3,750.60
<b>Total Purchased Property Services</b>	<b>\$2,250.36</b>	<b>\$1,500.24</b>		<b>\$3,750.60</b>
500 <u>Other Purchased Services</u>				
530 Communications	553.81	369.20		923.01
580 Travel	193.29	128.86		322.15
<b>Total Other Purchased Services</b>	<b>\$747.10</b>	<b>\$498.06</b>		<b>\$1,245.16</b>
600 <u>Supplies</u>				
610 General Supplies	563.98	375.99		939.97
<b>Total Supplies</b>	<b>\$563.98</b>	<b>\$375.99</b>		<b>\$939.97</b>
<b>Total 2111 Supervision of Student Services – Head of Component</b>	<b>\$7,316.58</b>	<b>\$4,877.71</b>	<b>\$37,052.30</b>	<b>\$49,246.59</b>

LEA : 123466403     Pottstown SD

Printed 1/4/2021 2:17:18 PM

General Fund (10)

2120 Guidance Services	Elementary	Secondary	Federal	Total
100 Personnel Services – Salaries				
100 Personnel Services – Salaries	191,501.80	127,667.87		319,169.67
Total Personnel Services – Salaries	\$191,501.80	\$127,667.87		\$319,169.67
200 Personnel Services – Employee Benefits				
210 Group Insurance – Contracted Provider	24,603.85	16,402.57		41,006.42
220 Social Security Contributions	14,290.83	9,527.22		23,818.05
230 PSERS Retirement Contributions	65,313.26	43,542.17		108,855.43
Total Personnel Services – Employee Benefits	\$104,207.94	\$69,471.96		\$173,679.90
Total 2120 Guidance Services	\$295,709.74	\$197,139.83		\$492,849.57

LEA : 123466403     Pottstown SD

Printed 1/4/2021 2:17:18 PM

General Fund (10)				
2140 Psychological Services	<u>Elementary</u>	<u>Secondary</u>	<u>Federal</u>	<u>Total</u>
100 <u>Personnel Services – Salaries</u>				
100 Personnel Services – Salaries	265,908.25	177,272.17		443,180.42
<b>Total Personnel Services – Salaries</b>	<b>\$265,908.25</b>	<b>\$177,272.17</b>		<b>\$443,180.42</b>
200 <u>Personnel Services – Employee Benefits</u>				
210 Group Insurance – Contracted Provider	47,878.84	31,919.23		79,798.07
220 Social Security Contributions	19,759.80	13,173.20		32,933.00
230 PSERS Retirement Contributions	84,852.23	56,568.15		141,420.38
<b>Total Personnel Services – Employee Benefits</b>	<b>\$152,490.87</b>	<b>\$101,660.58</b>		<b>\$254,151.45</b>
300 <u>Purchased Professional and Technical Services</u>				
322 Professional Educational Services – Ius	4,800.00	3,200.00		8,000.00
329 Professional Educational Services – Other	13,213.02	8,808.69		22,021.71
330 Other Professional Services	108,681.30	72,454.20	5,795.00	186,930.50
<b>Total Purchased Professional and Technical Services</b>	<b>\$126,694.32</b>	<b>\$84,462.89</b>	<b>\$5,795.00</b>	<b>\$216,952.21</b>
500 <u>Other Purchased Services</u>				
580 Travel	64.42	42.95		107.37
<b>Total Other Purchased Services</b>	<b>\$64.42</b>	<b>\$42.95</b>		<b>\$107.37</b>
600 <u>Supplies</u>				
610 General Supplies	11,304.04	7,536.03		18,840.07
<b>Total Supplies</b>	<b>\$11,304.04</b>	<b>\$7,536.03</b>		<b>\$18,840.07</b>
800 <u>Other Objects</u>				
810 Dues and Fees	126.00	84.00		210.00
<b>Total Other Objects</b>	<b>\$126.00</b>	<b>\$84.00</b>		<b>\$210.00</b>
<b>Total 2140 Psychological Services</b>	<b>\$556,587.90</b>	<b>\$371,058.62</b>	<b>\$5,795.00</b>	<b>\$933,441.52</b>

LEA : 123466403     Pottstown SD

Printed 1/4/2021 2:17:18 PM

General Fund (10)

2150 Speech Pathology and Audiology Services	Elementary	Secondary	Federal	Total
100 <u>Personnel Services – Salaries</u>				
100 Personnel Services – Salaries	233,124.28	155,416.18		388,540.46
<b>Total Personnel Services – Salaries</b>	<b>\$233,124.28</b>	<b>\$155,416.18</b>		<b>\$388,540.46</b>
200 <u>Personnel Services – Employee Benefits</u>				
210 Group Insurance – Contracted Provider	32,243.16	21,495.44		53,738.60
220 Social Security Contributions	17,330.48	11,553.66		28,884.14
230 PSERS Retirement Contributions	79,295.12	52,863.42		132,158.54
<b>Total Personnel Services – Employee Benefits</b>	<b>\$128,868.76</b>	<b>\$85,912.52</b>		<b>\$214,781.28</b>
300 <u>Purchased Professional and Technical Services</u>				
322 Professional Educational Services – Ius	876.00	584.00		1,460.00
330 Other Professional Services			5,805.17	5,805.17
<b>Total Purchased Professional and Technical Services</b>	<b>\$876.00</b>	<b>\$584.00</b>	<b>\$5,805.17</b>	<b>\$7,265.17</b>
500 <u>Other Purchased Services</u>				
580 Travel	147.56	98.37		245.93
<b>Total Other Purchased Services</b>	<b>\$147.56</b>	<b>\$98.37</b>		<b>\$245.93</b>
600 <u>Supplies</u>				
610 General Supplies	5,040.28	3,360.18		8,400.46
<b>Total Supplies</b>	<b>\$5,040.28</b>	<b>\$3,360.18</b>		<b>\$8,400.46</b>
800 <u>Other Objects</u>				
810 Dues and Fees			1,102.00	1,102.00
<b>Total Other Objects</b>			<b>\$1,102.00</b>	<b>\$1,102.00</b>
<b>Total 2150 Speech Pathology and Audiology Services</b>	<b>\$368,056.88</b>	<b>\$245,371.25</b>	<b>\$6,907.17</b>	<b>\$620,335.30</b>

LEA : 123466403     Pottstown SD

Printed 1/4/2021 2:17:18 PM

General Fund (10)				
2160 Social Work Services	<u>Elementary</u>	<u>Secondary</u>	<u>Federal</u>	<u>Total</u>
100 <u>Personnel Services – Salaries</u>				
100 Personnel Services – Salaries				28,158.00
Total Personnel Services – Salaries				\$28,158.00
200 <u>Personnel Services – Employee Benefits</u>				
210 Group Insurance – Contracted Provider				10,083.78
220 Social Security Contributions				2,097.14
230 PSERS Retirement Contributions				9,719.08
Total Personnel Services – Employee Benefits				\$21,900.00
300 <u>Purchased Professional and Technical Services</u>				
329 Professional Educational Services – Other				943.17
Total Purchased Professional and Technical Services				\$943.17
Total 2160 Social Work Services				\$51,001.17

LEA : 123466403     Pottstown SD

Printed 1/4/2021 2:17:18 PM

General Fund (10)				
2170 Student Accounting Services	<u>Elementary</u>	<u>Secondary</u>	<u>Federal</u>	<u>Total</u>
100 <u>Personnel Services – Salaries</u>				
100 Personnel Services – Salaries				49,368.28
Total Personnel Services – Salaries				\$49,368.28
200 <u>Personnel Services – Employee Benefits</u>				
210 Group Insurance – Contracted Provider				13,694.43
220 Social Security Contributions				3,660.02
230 PSERS Retirement Contributions				16,928.34
Total Personnel Services – Employee Benefits				\$34,282.79
300 <u>Purchased Professional and Technical Services</u>				
390 Other Purchased Professional and Technical Services				650.00
Total Purchased Professional and Technical Services				\$650.00
500 <u>Other Purchased Services</u>				
580 Travel				1,100.00
Total Other Purchased Services				\$1,100.00
600 <u>Supplies</u>				
610 General Supplies				9,301.00
Total Supplies				\$9,301.00
Total 2170 Student Accounting Services				\$94,702.07

LEA : 123466403     Pottstown SD

Printed 1/4/2021 2:17:18 PM

General Fund (10)

2200 Support Services – Instructional Staff	Elementary	Secondary	Federal	Total
<b>100 Personnel Services – Salaries</b>				
100 Personnel Services – Salaries	502,840.23	335,226.83	89,740.30	927,807.36
<b>Total Personnel Services – Salaries</b>	<b>\$502,840.23</b>	<b>\$335,226.83</b>	<b>\$89,740.30</b>	<b>\$927,807.36</b>
<b>200 Personnel Services – Employee Benefits</b>				
210 Group Insurance – Contracted Provider	104,644.13	69,762.77	7,236.08	181,642.98
220 Social Security Contributions	38,887.90	25,925.27	6,696.09	71,509.26
230 PSERS Retirement Contributions	189,613.26	126,408.85	9,238.46	325,260.57
240 Tuition Reimbursement	26,592.98	17,728.65		44,321.63
<b>Total Personnel Services – Employee Benefits</b>	<b>\$359,738.27</b>	<b>\$239,825.54</b>	<b>\$23,170.63</b>	<b>\$622,734.44</b>
<b>300 Purchased Professional and Technical Services</b>				
322 Professional Educational Services – Ius	62,424.00	41,616.00		104,040.00
329 Professional Educational Services – Other	351.00	234.00	385.00	970.00
330 Other Professional Services	567.00	378.00		945.00
360 Employee Training and Development Services	561.00	374.00	6,364.66	7,299.66
<b>Total Purchased Professional and Technical Services</b>	<b>\$63,903.00</b>	<b>\$42,602.00</b>	<b>\$6,749.66</b>	<b>\$113,254.66</b>
<b>400 Purchased Property Services</b>				
430 Repairs and Maintenance Services	18,797.19	12,531.46		31,328.65
440 Rentals	6,945.76	4,630.50		11,576.26
<b>Total Purchased Property Services</b>	<b>\$25,742.95</b>	<b>\$17,161.96</b>		<b>\$42,904.91</b>
<b>500 Other Purchased Services</b>				
530 Communications	2,669.72	1,779.80		4,449.52
580 Travel	1,003.25	668.84	46.69	1,718.78
<b>Total Other Purchased Services</b>	<b>\$3,672.97</b>	<b>\$2,448.64</b>	<b>\$46.69</b>	<b>\$6,168.30</b>
<b>600 Supplies</b>				
610 General Supplies	97,987.46	65,324.97	15,578.00	178,890.43
640 Books and Periodicals	14,700.75	9,800.49		24,501.24
650 Supplies & Fees – Technology Related	175,213.17	116,808.78	436,063.61	728,085.56
<b>Total Supplies</b>	<b>\$287,901.38</b>	<b>\$191,934.24</b>	<b>\$451,641.61</b>	<b>\$931,477.23</b>
<b>700 Property</b>				
790 Other Property	32,566.30	21,710.86		54,277.16
<b>Total Property</b>	<b>\$32,566.30</b>	<b>\$21,710.86</b>		<b>\$54,277.16</b>
<b>800 Other Objects</b>				
810 Dues and Fees	527.40	351.60		879.00
<b>Total Other Objects</b>	<b>\$527.40</b>	<b>\$351.60</b>		<b>\$879.00</b>
<b>Total 2200 Support Services – Instructional Staff</b>	<b>\$1,276,892.50</b>	<b>\$851,261.67</b>	<b>\$571,348.89</b>	<b>\$2,699,503.06</b>

LEA : 123466403     Pottstown SD

Printed 1/4/2021 2:17:18 PM

General Fund (10)

2210 Supervision of Educational Media Services	Elementary	Secondary	Federal	Total
100 <u>Personnel Services – Salaries</u>				
100 Personnel Services – Salaries	43,543.12	29,028.74		72,571.86
<b>Total Personnel Services – Salaries</b>	<b>\$43,543.12</b>	<b>\$29,028.74</b>		<b>\$72,571.86</b>
200 <u>Personnel Services – Employee Benefits</u>				
210 Group Insurance – Contracted Provider	10,226.11	6,817.41		17,043.52
220 Social Security Contributions	3,261.23	2,174.15		5,435.38
230 PSERS Retirement Contributions	14,929.70	9,953.14		24,882.84
<b>Total Personnel Services – Employee Benefits</b>	<b>\$28,417.04</b>	<b>\$18,944.70</b>		<b>\$47,361.74</b>
300 <u>Purchased Professional and Technical Services</u>				
322 Professional Educational Services – Ius	62,424.00	41,616.00		104,040.00
<b>Total Purchased Professional and Technical Services</b>	<b>\$62,424.00</b>	<b>\$41,616.00</b>		<b>\$104,040.00</b>
500 <u>Other Purchased Services</u>				
530 Communications	2,024.83	1,349.88		3,374.71
<b>Total Other Purchased Services</b>	<b>\$2,024.83</b>	<b>\$1,349.88</b>		<b>\$3,374.71</b>
<b>Total 2210 Supervision of Educational Media Services</b>	<b>\$136,408.99</b>	<b>\$90,939.32</b>		<b>\$227,348.31</b>



LEA : 123466403     Pottstown SD

Printed 1/4/2021 2:17:18 PM

General Fund (10)				
2211 Supervision of Educational Media Services – Head of Component	<u>Elementary</u>	<u>Secondary</u>	<u>Federal</u>	<u>Total</u>
100 <u>Personnel Services – Salaries</u>				
100 Personnel Services – Salaries	43,543.12	29,028.74		72,571.86
<b>Total Personnel Services – Salaries</b>	<b>\$43,543.12</b>	<b>\$29,028.74</b>		<b>\$72,571.86</b>
200 <u>Personnel Services – Employee Benefits</u>				
210 Group Insurance – Contracted Provider	10,226.11	6,817.41		17,043.52
220 Social Security Contributions	3,261.23	2,174.15		5,435.38
230 PSERS Retirement Contributions	14,929.70	9,953.14		24,882.84
<b>Total Personnel Services – Employee Benefits</b>	<b>\$28,417.04</b>	<b>\$18,944.70</b>		<b>\$47,361.74</b>
300 <u>Purchased Professional and Technical Services</u>				
322 Professional Educational Services – Ius	62,424.00	41,616.00		104,040.00
<b>Total Purchased Professional and Technical Services</b>	<b>\$62,424.00</b>	<b>\$41,616.00</b>		<b>\$104,040.00</b>
500 <u>Other Purchased Services</u>				
530 Communications	2,024.83	1,349.88		3,374.71
<b>Total Other Purchased Services</b>	<b>\$2,024.83</b>	<b>\$1,349.88</b>		<b>\$3,374.71</b>
<b>Total 2211 Supervision of Educational Media Services – Head of Component</b>	<b>\$136,408.99</b>	<b>\$90,939.32</b>		<b>\$227,348.31</b>

LEA : 123466403     Pottstown SD

Printed 1/4/2021 2:17:18 PM

General Fund (10)				
2220 Technology Support Services	<u>Elementary</u>	<u>Secondary</u>	<u>Federal</u>	<u>Total</u>
100 <u>Personnel Services – Salaries</u>				
100 Personnel Services – Salaries	100,798.78	67,199.19		167,997.97
<b>Total Personnel Services – Salaries</b>	<b>\$100,798.78</b>	<b>\$67,199.19</b>		<b>\$167,997.97</b>
200 <u>Personnel Services – Employee Benefits</u>				
210 Group Insurance – Contracted Provider	35,035.07	23,356.71		58,391.78
220 Social Security Contributions	7,115.66	4,743.77		11,859.43
230 PSERS Retirement Contributions	34,185.04	22,790.02		56,975.06
<b>Total Personnel Services – Employee Benefits</b>	<b>\$76,335.77</b>	<b>\$50,890.50</b>		<b>\$127,226.27</b>
500 <u>Other Purchased Services</u>				
580 Travel	818.06	545.38		1,363.44
<b>Total Other Purchased Services</b>	<b>\$818.06</b>	<b>\$545.38</b>		<b>\$1,363.44</b>
600 <u>Supplies</u>				
610 General Supplies			15,578.00	15,578.00
<b>Total Supplies</b>			<b>\$15,578.00</b>	<b>\$15,578.00</b>
<b>Total 2220 Technology Support Services</b>	<b>\$177,952.61</b>	<b>\$118,635.07</b>	<b>\$15,578.00</b>	<b>\$312,165.68</b>

LEA : 123466403     Pottstown SD

Printed 1/4/2021 2:17:18 PM

General Fund (10)				
2240 Computer-Assisted Instruction Support Services	<u>Elementary</u>	<u>Secondary</u>	<u>Federal</u>	<u>Total</u>
300 <u>Purchased Professional and Technical Services</u>				
330 Other Professional Services	567.00	378.00		945.00
Total Purchased Professional and Technical Services	\$567.00	\$378.00		\$945.00
400 <u>Purchased Property Services</u>				
430 Repairs and Maintenance Services	18,797.19	12,531.46		31,328.65
440 Rentals	6,945.76	4,630.50		11,576.26
Total Purchased Property Services	\$25,742.95	\$17,161.96		\$42,904.91
600 <u>Supplies</u>				
610 General Supplies	81,178.32	54,118.88		135,297.20
640 Books and Periodicals	3,495.00	2,330.00		5,825.00
650 Supplies & Fees – Technology Related	175,213.17	116,808.78	436,063.61	728,085.56
Total Supplies	\$259,886.49	\$173,257.66	\$436,063.61	\$869,207.76
700 <u>Property</u>				
790 Other Property	32,566.30	21,710.86		54,277.16
Total Property	\$32,566.30	\$21,710.86		\$54,277.16
800 <u>Other Objects</u>				
810 Dues and Fees	150.00	100.00		250.00
Total Other Objects	\$150.00	\$100.00		\$250.00
Total 2240 Computer-Assisted Instruction Support Services	\$318,912.74	\$212,608.48	\$436,063.61	\$967,584.83

LEA : 123466403     Pottstown SD

Printed 1/4/2021 2:17:18 PM

General Fund (10)					
2250 School Library Services		Elementary	Secondary	Federal	Total
100 Personnel Services – Salaries					
100 Personnel Services – Salaries		229,580.18	153,053.46		382,633.64
Total Personnel Services – Salaries		\$229,580.18	\$153,053.46		\$382,633.64
200 Personnel Services – Employee Benefits					
210 Group Insurance – Contracted Provider		38,395.39	25,596.93		63,992.32
220 Social Security Contributions		17,004.47	11,336.32		28,340.79
230 PSERS Retirement Contributions		78,370.48	52,246.99		130,617.47
Total Personnel Services – Employee Benefits		\$133,770.34	\$89,180.24		\$222,950.58
600 Supplies					
610 General Supplies		1,808.05	1,205.37		3,013.42
640 Books and Periodicals		6,099.85	4,066.56		10,166.41
Total Supplies		\$7,907.90	\$5,271.93		\$13,179.83
Total 2250 School Library Services		\$371,258.42	\$247,505.63		\$618,764.05

LEA : 123466403     Pottstown SD

Printed 1/4/2021 2:17:18 PM

General Fund (10)				
2260 Instruction and Curriculum Development Services	<u>Elementary</u>	<u>Secondary</u>	<u>Federal</u>	<u>Total</u>
100 <u>Personnel Services – Salaries</u>				
100 Personnel Services – Salaries	109,537.56	73,025.04		182,562.60
<b>Total Personnel Services – Salaries</b>	<b>\$109,537.56</b>	<b>\$73,025.04</b>		<b>\$182,562.60</b>
200 <u>Personnel Services – Employee Benefits</u>				
210 Group Insurance – Contracted Provider	12,970.43	8,646.96		21,617.39
220 Social Security Contributions	10,187.48	6,791.66		16,979.14
230 PSERS Retirement Contributions	42,929.92	28,619.95		71,549.87
<b>Total Personnel Services – Employee Benefits</b>	<b>\$66,087.83</b>	<b>\$44,058.57</b>		<b>\$110,146.40</b>
300 <u>Purchased Professional and Technical Services</u>				
329 Professional Educational Services – Other	351.00	234.00	385.00	970.00
<b>Total Purchased Professional and Technical Services</b>	<b>\$351.00</b>	<b>\$234.00</b>	<b>\$385.00</b>	<b>\$970.00</b>
500 <u>Other Purchased Services</u>				
530 Communications	644.89	429.92		1,074.81
580 Travel	144.44	96.29		240.73
<b>Total Other Purchased Services</b>	<b>\$789.33</b>	<b>\$526.21</b>		<b>\$1,315.54</b>
600 <u>Supplies</u>				
610 General Supplies	15,001.09	10,000.72		25,001.81
640 Books and Periodicals	4,336.70	2,891.13		7,227.83
<b>Total Supplies</b>	<b>\$19,337.79</b>	<b>\$12,891.85</b>		<b>\$32,229.64</b>
800 <u>Other Objects</u>				
810 Dues and Fees	377.40	251.60		629.00
<b>Total Other Objects</b>	<b>\$377.40</b>	<b>\$251.60</b>		<b>\$629.00</b>
<b>Total 2260 Instruction and Curriculum Development Services</b>	<b>\$196,480.91</b>	<b>\$130,987.27</b>	<b>\$385.00</b>	<b>\$327,853.18</b>

LEA : 123466403     Pottstown SD

Printed 1/4/2021 2:17:18 PM

General Fund (10)				
2270 Instructional Staff Professional Development Services	<u>Elementary</u>	<u>Secondary</u>	<u>Federal</u>	<u>Total</u>
100 <u>Personnel Services – Salaries</u>				
100 Personnel Services – Salaries	468.00	312.00	89,740.30	90,520.30
<b>Total Personnel Services – Salaries</b>	<b>\$468.00</b>	<b>\$312.00</b>	<b>\$89,740.30</b>	<b>\$90,520.30</b>
200 <u>Personnel Services – Employee Benefits</u>				
210 Group Insurance – Contracted Provider	57.58	38.39	7,236.08	7,332.05
220 Social Security Contributions	34.33	22.88	6,696.09	6,753.30
230 PSERS Retirement Contributions	13,057.19	8,704.79	9,238.46	31,000.44
240 Tuition Reimbursement	26,592.98	17,728.65		44,321.63
<b>Total Personnel Services – Employee Benefits</b>	<b>\$39,742.08</b>	<b>\$26,494.71</b>	<b>\$23,170.63</b>	<b>\$89,407.42</b>
300 <u>Purchased Professional and Technical Services</u>				
360 Employee Training and Development Services	561.00	374.00	6,364.66	7,299.66
<b>Total Purchased Professional and Technical Services</b>	<b>\$561.00</b>	<b>\$374.00</b>	<b>\$6,364.66</b>	<b>\$7,299.66</b>
500 <u>Other Purchased Services</u>				
580 Travel	40.75	27.17	46.69	114.61
<b>Total Other Purchased Services</b>	<b>\$40.75</b>	<b>\$27.17</b>	<b>\$46.69</b>	<b>\$114.61</b>
600 <u>Supplies</u>				
640 Books and Periodicals	769.20	512.80		1,282.00
<b>Total Supplies</b>	<b>\$769.20</b>	<b>\$512.80</b>		<b>\$1,282.00</b>
<b>Total 2270 Instructional Staff Professional Development Services</b>	<b>\$41,581.03</b>	<b>\$27,720.68</b>	<b>\$119,322.28</b>	<b>\$188,623.99</b>

LEA : 123466403     Pottstown SD

Printed 1/4/2021 2:17:18 PM

General Fund (10)

2290 Other Instructional Staff Services	<u>Elementary</u>	<u>Secondary</u>	<u>Federal</u>	<u>Total</u>
100 <u>Personnel Services – Salaries</u>				
100 Personnel Services – Salaries	18,912.59	12,608.40		31,520.99
<b>Total Personnel Services – Salaries</b>	<b>\$18,912.59</b>	<b>\$12,608.40</b>		<b>\$31,520.99</b>
200 <u>Personnel Services – Employee Benefits</u>				
210 Group Insurance – Contracted Provider	7,959.55	5,306.37		13,265.92
220 Social Security Contributions	1,284.73	856.49		2,141.22
230 PSERS Retirement Contributions	6,140.93	4,093.96		10,234.89
<b>Total Personnel Services – Employee Benefits</b>	<b>\$15,385.21</b>	<b>\$10,256.82</b>		<b>\$25,642.03</b>
<b>Total 2290 Other Instructional Staff Services</b>	<b>\$34,297.80</b>	<b>\$22,865.22</b>		<b>\$57,163.02</b>

LEA : 123466403     Pottstown SD

Printed 1/4/2021 2:17:18 PM

<b>General Fund (10)</b>				
<b>2300 Support Services – Administration</b>	<b><u>Elementary</u></b>	<b><u>Secondary</u></b>	<b><u>Federal</u></b>	<b><u>Total</u></b>
<b>100 <u>Personnel Services – Salaries</u></b>				
100 Personnel Services – Salaries	738,563.90	492,375.94		1,574,318.76
<b>Total Personnel Services – Salaries</b>	<b>\$738,563.90</b>	<b>\$492,375.94</b>		<b>\$1,574,318.76</b>
<b>200 <u>Personnel Services – Employee Benefits</u></b>				
210 Group Insurance – Contracted Provider	157,353.29	104,902.20		327,456.39
220 Social Security Contributions	54,788.84	36,525.90		114,403.04
230 PSERS Retirement Contributions	251,205.37	167,470.25		538,756.51
280 Other Post-Employment Benefits (OPEB)				16,041.45
299 All Other Employee Benefits				10,000.00
<b>Total Personnel Services – Employee Benefits</b>	<b>\$463,347.50</b>	<b>\$308,898.35</b>		<b>\$1,006,657.39</b>
<b>300 <u>Purchased Professional and Technical Services</u></b>				
329 Professional Educational Services – Other	9,507.57	6,338.38		15,845.95
330 Other Professional Services				300,720.51
350 Security / Safety Services	63,280.26	42,186.84		105,467.10
390 Other Purchased Professional and Technical Services	75.00	50.00		78,708.30
<b>Total Purchased Professional and Technical Services</b>	<b>\$72,862.83</b>	<b>\$48,575.22</b>		<b>\$500,741.86</b>
<b>400 <u>Purchased Property Services</u></b>				
430 Repairs and Maintenance Services	4.50	3.00		7.50
440 Rentals	46,480.49	30,987.00		78,394.25
<b>Total Purchased Property Services</b>	<b>\$46,484.99</b>	<b>\$30,990.00</b>		<b>\$78,401.75</b>
<b>500 <u>Other Purchased Services</u></b>				
520 Insurance – General				221,323.00
530 Communications	6,776.89	4,517.93		18,666.40
549 Other Advertising/Public Relations	603.96	402.64		3,638.28
580 Travel				1,014.94
<b>Total Other Purchased Services</b>	<b>\$7,380.85</b>	<b>\$4,920.57</b>		<b>\$244,642.62</b>
<b>600 <u>Supplies</u></b>				
610 General Supplies	55,402.88	36,935.25		101,281.99
640 Books and Periodicals	4,477.70	2,985.14		7,462.84
<b>Total Supplies</b>	<b>\$59,880.58</b>	<b>\$39,920.39</b>		<b>\$108,744.83</b>
<b>700 <u>Property</u></b>				
752 Capital Equipment – Original and Additional				380.00
<b>Total Property</b>				<b>\$380.00</b>
<b>800 <u>Other Objects</u></b>				
810 Dues and Fees	4,081.45	2,720.96		35,016.83
<b>Total Other Objects</b>	<b>\$4,081.45</b>	<b>\$2,720.96</b>		<b>\$35,016.83</b>
<b>Total 2300 Support Services – Administration</b>	<b>\$1,392,602.10</b>	<b>\$928,401.43</b>		<b>\$3,548,904.04</b>



LEA : 123466403     Pottstown SD

Printed 1/4/2021 2:17:18 PM

General Fund (10)				
2310 Board Services	<u>Elementary</u>	<u>Secondary</u>	<u>Federal</u>	<u>Total</u>
300 <u>Purchased Professional and Technical Services</u>				
330 Other Professional Services				80,400.86
Total Purchased Professional and Technical Services				\$80,400.86
500 <u>Other Purchased Services</u>				
520 Insurance – General				221,323.00
549 Other Advertising/Public Relations				2,631.68
Total Other Purchased Services				\$223,954.68
600 <u>Supplies</u>				
610 General Supplies				584.23
Total Supplies				\$584.23
800 <u>Other Objects</u>				
810 Dues and Fees				14,788.22
Total Other Objects				\$14,788.22
Total 2310 Board Services				\$319,727.99

LEA : 123466403     Pottstown SD

Printed 1/4/2021 2:17:18 PM

General Fund (10)

2330 Tax Assessment and Collection Services	<u>Elementary</u>	<u>Secondary</u>	<u>Federal</u>	<u>Total</u>
300 <u>Purchased Professional and Technical Services</u>				
330 Other Professional Services				148,508.05
390 Other Purchased Professional and Technical Services				77,988.30
Total Purchased Professional and Technical Services				\$226,496.35
400 <u>Purchased Property Services</u>				
440 Rentals				926.76
Total Purchased Property Services				\$926.76
500 <u>Other Purchased Services</u>				
530 Communications				6,558.60
Total Other Purchased Services				\$6,558.60
Total 2330 Tax Assessment and Collection Services				\$233,981.71

LEA : 123466403     Pottstown SD

Printed 1/4/2021 2:17:18 PM

General Fund (10)				
2340 Staff Relations and Negotiations Services	<u>Elementary</u>	<u>Secondary</u>	<u>Federal</u>	<u>Total</u>
100 <u>Personnel Services – Salaries</u>				
100 Personnel Services – Salaries				60,678.55
Total Personnel Services – Salaries				\$60,678.55
200 <u>Personnel Services – Employee Benefits</u>				
210 Group Insurance – Contracted Provider				23,020.51
220 Social Security Contributions				4,467.78
230 PSERS Retirement Contributions				20,846.16
Total Personnel Services – Employee Benefits				\$48,334.45
300 <u>Purchased Professional and Technical Services</u>				
330 Other Professional Services				57,253.66
390 Other Purchased Professional and Technical Services				595.00
Total Purchased Professional and Technical Services				\$57,848.66
600 <u>Supplies</u>				
610 General Supplies				2,195.75
Total Supplies				\$2,195.75
800 <u>Other Objects</u>				
810 Dues and Fees				10,408.20
Total Other Objects				\$10,408.20
Total 2340 Staff Relations and Negotiations Services				\$179,465.61

LEA : 123466403     Pottstown SD

Printed 1/4/2021 2:17:18 PM

General Fund (10)

2350 Legal and Accounting Services

<u>Elementary</u>	<u>Secondary</u>	<u>Federal</u>	<u>Total</u>
-------------------	------------------	----------------	--------------

300 Purchased Professional and Technical Services

330 Other Professional Services			14,557.94
---------------------------------	--	--	-----------

<b>Total Purchased Professional and Technical Services</b>			<b>\$14,557.94</b>
--	--	--	--------------------

<b>Total 2350 Legal and Accounting Services</b>			<b>\$14,557.94</b>
---	--	--	--------------------

LEA : 123466403     Pottstown SD

Printed 1/4/2021 2:17:18 PM

General Fund (10)				
2360 Office of the Superintendent / Executive Director Services	<u>Elementary</u>	<u>Secondary</u>	<u>Federal</u>	<u>Total</u>
100 <u>Personnel Services – Salaries</u>				
100 Personnel Services – Salaries				237,151.13
<b>Total Personnel Services – Salaries</b>				<b>\$237,151.13</b>
200 <u>Personnel Services – Employee Benefits</u>				
210 Group Insurance – Contracted Provider				36,587.15
220 Social Security Contributions				15,189.53
230 PSERS Retirement Contributions				83,891.04
280 Other Post-Employment Benefits (OPEB)				16,041.45
299 All Other Employee Benefits				10,000.00
<b>Total Personnel Services – Employee Benefits</b>				<b>\$161,709.17</b>
500 <u>Other Purchased Services</u>				
530 Communications	920.67	613.78		1,534.45
580 Travel				1,014.94
<b>Total Other Purchased Services</b>	<b>\$920.67</b>	<b>\$613.78</b>		<b>\$2,549.39</b>
600 <u>Supplies</u>				
610 General Supplies				6,163.88
<b>Total Supplies</b>				<b>\$6,163.88</b>
700 <u>Property</u>				
752 Capital Equipment – Original and Additional				380.00
<b>Total Property</b>				<b>\$380.00</b>
800 <u>Other Objects</u>				
810 Dues and Fees				2,733.00
<b>Total Other Objects</b>				<b>\$2,733.00</b>
<b>Total 2360 Office of the Superintendent / Executive Director Services</b>	<b>\$920.67</b>	<b>\$613.78</b>		<b>\$410,686.57</b>

LEA : 123466403     Pottstown SD

Printed 1/4/2021 2:17:18 PM

General Fund (10)				
2370 Community Relations Services	<u>Elementary</u>	<u>Secondary</u>	<u>Federal</u>	<u>Total</u>
100 <u>Personnel Services – Salaries</u>				
100 Personnel Services – Salaries				45,549.24
Total Personnel Services – Salaries				\$45,549.24
200 <u>Personnel Services – Employee Benefits</u>				
210 Group Insurance – Contracted Provider				5,593.24
220 Social Security Contributions				3,430.99
230 PSERS Retirement Contributions				15,343.69
Total Personnel Services – Employee Benefits				\$24,367.92
500 <u>Other Purchased Services</u>				
530 Communications				812.98
Total Other Purchased Services				\$812.98
800 <u>Other Objects</u>				
810 Dues and Fees				285.00
Total Other Objects				\$285.00
Total 2370 Community Relations Services				\$71,015.14

LEA : 123466403     Pottstown SD

Printed 1/4/2021 2:17:18 PM

General Fund (10)				
2380 Office of the Principal Services	<u>Elementary</u>	<u>Secondary</u>	<u>Federal</u>	<u>Total</u>
100 <u>Personnel Services – Salaries</u>				
100 Personnel Services – Salaries	738,563.90	492,375.94		1,230,939.84
<b>Total Personnel Services – Salaries</b>	<b>\$738,563.90</b>	<b>\$492,375.94</b>		<b>\$1,230,939.84</b>
200 <u>Personnel Services – Employee Benefits</u>				
210 Group Insurance – Contracted Provider	157,353.29	104,902.20		262,255.49
220 Social Security Contributions	54,788.84	36,525.90		91,314.74
230 PSERS Retirement Contributions	251,205.37	167,470.25		418,675.62
<b>Total Personnel Services – Employee Benefits</b>	<b>\$463,347.50</b>	<b>\$308,898.35</b>		<b>\$772,245.85</b>
300 <u>Purchased Professional and Technical Services</u>				
329 Professional Educational Services – Other	9,507.57	6,338.38		15,845.95
350 Security / Safety Services	63,280.26	42,186.84		105,467.10
390 Other Purchased Professional and Technical Services	75.00	50.00		125.00
<b>Total Purchased Professional and Technical Services</b>	<b>\$72,862.83</b>	<b>\$48,575.22</b>		<b>\$121,438.05</b>
400 <u>Purchased Property Services</u>				
430 Repairs and Maintenance Services	4.50	3.00		7.50
440 Rentals	46,480.49	30,987.00		77,467.49
<b>Total Purchased Property Services</b>	<b>\$46,484.99</b>	<b>\$30,990.00</b>		<b>\$77,474.99</b>
500 <u>Other Purchased Services</u>				
530 Communications	5,856.22	3,904.15		9,760.37
549 Other Advertising/Public Relations	603.96	402.64		1,006.60
<b>Total Other Purchased Services</b>	<b>\$6,460.18</b>	<b>\$4,306.79</b>		<b>\$10,766.97</b>
600 <u>Supplies</u>				
610 General Supplies	55,402.88	36,935.25		92,338.13
640 Books and Periodicals	4,477.70	2,985.14		7,462.84
<b>Total Supplies</b>	<b>\$59,880.58</b>	<b>\$39,920.39</b>		<b>\$99,800.97</b>
800 <u>Other Objects</u>				
810 Dues and Fees	4,081.45	2,720.96		6,802.41
<b>Total Other Objects</b>	<b>\$4,081.45</b>	<b>\$2,720.96</b>		<b>\$6,802.41</b>
<b>Total 2380 Office of the Principal Services</b>	<b>\$1,391,681.43</b>	<b>\$927,787.65</b>		<b>\$2,319,469.08</b>

LEA : 123466403     Pottstown SD

Printed 1/4/2021 2:17:18 PM

General Fund (10)					
2400 Support Services – Pupil Health		Elementary	Secondary	Federal	Total
100 <u>Personnel Services – Salaries</u>					
100 Personnel Services – Salaries				58,834.00	510,374.38
Total Personnel Services – Salaries				\$58,834.00	\$510,374.38
200 <u>Personnel Services – Employee Benefits</u>					
210 Group Insurance – Contracted Provider				20,266.87	101,517.17
220 Social Security Contributions				4,304.18	37,352.61
230 PSERS Retirement Contributions				20,189.09	173,253.33
Total Personnel Services – Employee Benefits				\$44,760.14	\$312,123.11
300 <u>Purchased Professional and Technical Services</u>					
329 Professional Educational Services – Other					7,382.51
330 Other Professional Services					142,247.08
390 Other Purchased Professional and Technical Services					1,114.96
Total Purchased Professional and Technical Services					\$150,744.55
500 <u>Other Purchased Services</u>					
530 Communications					1,042.64
580 Travel					68.57
Total Other Purchased Services					\$1,111.21
600 <u>Supplies</u>					
610 General Supplies					22,192.52
Total Supplies					\$22,192.52
Total 2400 Support Services – Pupil Health				\$103,594.14	\$996,545.77



LEA : 123466403     Pottstown SD

Printed 1/4/2021 2:17:18 PM

General Fund (10)

2420 Medical Services	<u>Elementary</u>	<u>Secondary</u>	<u>Federal</u>	<u>Total</u>
<b>100 <u>Personnel Services – Salaries</u></b>				
100 Personnel Services – Salaries			58,834.00	238,242.86
<b>Total Personnel Services – Salaries</b>			<b>\$58,834.00</b>	<b>\$238,242.86</b>
<b>200 <u>Personnel Services – Employee Benefits</u></b>				
210 Group Insurance – Contracted Provider			20,266.87	70,192.24
220 Social Security Contributions			4,304.18	16,986.62
230 PSERS Retirement Contributions			20,189.09	81,747.13
<b>Total Personnel Services – Employee Benefits</b>			<b>\$44,760.14</b>	<b>\$168,925.99</b>
<b>300 <u>Purchased Professional and Technical Services</u></b>				
329 Professional Educational Services – Other				7,382.51
330 Other Professional Services				115,906.68
390 Other Purchased Professional and Technical Services				739.96
<b>Total Purchased Professional and Technical Services</b>				<b>\$124,029.15</b>
<b>500 <u>Other Purchased Services</u></b>				
530 Communications				1,042.64
580 Travel				68.57
<b>Total Other Purchased Services</b>				<b>\$1,111.21</b>
<b>600 <u>Supplies</u></b>				
610 General Supplies				6,933.17
<b>Total Supplies</b>				<b>\$6,933.17</b>
<b>Total 2420 Medical Services</b>			<b>\$103,594.14</b>	<b>\$539,242.38</b>

LEA : 123466403     Pottstown SD

Printed 1/4/2021 2:17:18 PM

General Fund (10)

2430 Dental Services

	<u>Elementary</u>	<u>Secondary</u>	<u>Federal</u>	<u>Total</u>
300 <u>Purchased Professional and Technical Services</u>				
330 Other Professional Services				4,544.40
Total Purchased Professional and Technical Services				\$4,544.40
Total 2430 Dental Services				\$4,544.40

LEA : 123466403     Pottstown SD

Printed 1/4/2021 2:17:18 PM

General Fund (10)				
2440 Nursing Services				
	<u>Elementary</u>	<u>Secondary</u>	<u>Federal</u>	<u>Total</u>
100 <u>Personnel Services – Salaries</u>				
100 Personnel Services – Salaries				272,131.52
Total Personnel Services – Salaries				\$272,131.52
200 <u>Personnel Services – Employee Benefits</u>				
210 Group Insurance – Contracted Provider				31,324.93
220 Social Security Contributions				20,365.99
230 PSERS Retirement Contributions				91,506.20
Total Personnel Services – Employee Benefits				\$143,197.12
300 <u>Purchased Professional and Technical Services</u>				
330 Other Professional Services				21,796.00
390 Other Purchased Professional and Technical Services				375.00
Total Purchased Professional and Technical Services				\$22,171.00
600 <u>Supplies</u>				
610 General Supplies				15,259.35
Total Supplies				\$15,259.35
Total 2440 Nursing Services				\$452,758.99

LEA : 123466403     Pottstown SD

Printed 1/4/2021 2:17:18 PM

General Fund (10)				
2500 Support Services – Business	Elementary	Secondary	Federal	Total
<b>100 Personnel Services – Salaries</b>				
100 Personnel Services – Salaries			25,431.47	445,771.84
<b>Total Personnel Services – Salaries</b>			<b>\$25,431.47</b>	<b>\$445,771.84</b>
<b>200 Personnel Services – Employee Benefits</b>				
210 Group Insurance – Contracted Provider			6,177.85	80,478.63
220 Social Security Contributions			1,899.90	31,568.78
230 PSERS Retirement Contributions			2,738.81	145,885.02
<b>Total Personnel Services – Employee Benefits</b>			<b>\$10,816.56</b>	<b>\$257,932.43</b>
<b>300 Purchased Professional and Technical Services</b>				
330 Other Professional Services			5,000.00	57,542.65
390 Other Purchased Professional and Technical Services				1,120.00
<b>Total Purchased Professional and Technical Services</b>			<b>\$5,000.00</b>	<b>\$58,662.65</b>
<b>400 Purchased Property Services</b>				
440 Rentals				34,432.92
<b>Total Purchased Property Services</b>				<b>\$34,432.92</b>
<b>500 Other Purchased Services</b>				
520 Insurance – General				4,907.02
530 Communications				14,254.06
580 Travel			67.68	869.56
<b>Total Other Purchased Services</b>			<b>\$67.68</b>	<b>\$20,030.64</b>
<b>600 Supplies</b>				
610 General Supplies				24,986.60
<b>Total Supplies</b>				<b>\$24,986.60</b>
<b>700 Property</b>				
752 Capital Equipment – Original and Additional				300.00
<b>Total Property</b>				<b>\$300.00</b>
<b>800 Other Objects</b>				
810 Dues and Fees				1,129.61
890 Miscellaneous Expenditures				1,264.02
<b>Total Other Objects</b>				<b>\$2,393.63</b>
<b>Total 2500 Support Services – Business</b>			<b>\$41,315.71</b>	<b>\$844,510.71</b>

LEA : 123466403     Pottstown SD

Printed 1/4/2021 2:17:18 PM

General Fund (10)				
2510 Fiscal Services				
	<u>Elementary</u>	<u>Secondary</u>	<u>Federal</u>	<u>Total</u>
100 <u>Personnel Services – Salaries</u>				
100 Personnel Services – Salaries			25,431.47	445,771.84
Total Personnel Services – Salaries			\$25,431.47	\$445,771.84
200 <u>Personnel Services – Employee Benefits</u>				
210 Group Insurance – Contracted Provider			6,177.85	80,478.63
220 Social Security Contributions			1,899.90	31,568.78
230 PSERS Retirement Contributions			2,738.81	145,885.02
Total Personnel Services – Employee Benefits			\$10,816.56	\$257,932.43
300 <u>Purchased Professional and Technical Services</u>				
330 Other Professional Services			5,000.00	41,044.00
390 Other Purchased Professional and Technical Services				1,120.00
Total Purchased Professional and Technical Services			\$5,000.00	\$42,164.00
400 <u>Purchased Property Services</u>				
440 Rentals				5,188.92
Total Purchased Property Services				\$5,188.92
500 <u>Other Purchased Services</u>				
520 Insurance – General				4,907.02
530 Communications				14,254.06
580 Travel			67.68	869.56
Total Other Purchased Services			\$67.68	\$20,030.64
600 <u>Supplies</u>				
610 General Supplies				10,546.33
Total Supplies				\$10,546.33
700 <u>Property</u>				
752 Capital Equipment – Original and Additional				300.00
Total Property				\$300.00
800 <u>Other Objects</u>				
810 Dues and Fees				1,129.61
890 Miscellaneous Expenditures				1,264.02
Total Other Objects				\$2,393.63
Total 2510 Fiscal Services			\$41,315.71	\$784,327.79

LEA : 123466403     Pottstown SD

Printed 1/4/2021 2:17:18 PM

General Fund (10)				
2511 Supervision of Fiscal Services - Head of Component	<u>Elementary</u>	<u>Secondary</u>	<u>Federal</u>	<u>Total</u>
100 <u>Personnel Services – Salaries</u>				
100 Personnel Services – Salaries				189,975.79
Total Personnel Services – Salaries				\$189,975.79
200 <u>Personnel Services – Employee Benefits</u>				
210 Group Insurance – Contracted Provider				22,730.71
220 Social Security Contributions				12,611.49
230 PSERS Retirement Contributions				58,284.63
Total Personnel Services – Employee Benefits				\$93,626.83
300 <u>Purchased Professional and Technical Services</u>				
330 Other Professional Services			5,000.00	12,760.00
390 Other Purchased Professional and Technical Services				490.00
Total Purchased Professional and Technical Services			\$5,000.00	\$13,250.00
500 <u>Other Purchased Services</u>				
580 Travel			67.68	304.75
Total Other Purchased Services			\$67.68	\$304.75
600 <u>Supplies</u>				
610 General Supplies				206.04
Total Supplies				\$206.04
700 <u>Property</u>				
752 Capital Equipment – Original and Additional				300.00
Total Property				\$300.00
800 <u>Other Objects</u>				
810 Dues and Fees				59.99
Total Other Objects				\$59.99
Total 2511 Supervision of Fiscal Services - Head of Component			\$5,067.68	\$297,723.40

LEA : 123466403     Pottstown SD

Printed 1/4/2021 2:17:18 PM

General Fund (10)				
2512 Budgeting Services	<u>Elementary</u>	<u>Secondary</u>	<u>Federal</u>	<u>Total</u>
100 <u>Personnel Services – Salaries</u>				
100 Personnel Services – Salaries				108,225.95
Total Personnel Services – Salaries				\$108,225.95
200 <u>Personnel Services – Employee Benefits</u>				
210 Group Insurance – Contracted Provider				25,641.47
220 Social Security Contributions				7,991.15
230 PSERS Retirement Contributions				36,998.63
Total Personnel Services – Employee Benefits				\$70,631.25
300 <u>Purchased Professional and Technical Services</u>				
390 Other Purchased Professional and Technical Services				350.00
Total Purchased Professional and Technical Services				\$350.00
500 <u>Other Purchased Services</u>				
580 Travel				226.22
Total Other Purchased Services				\$226.22
600 <u>Supplies</u>				
610 General Supplies				94.40
Total Supplies				\$94.40
Total 2512 Budgeting Services				\$179,527.82

LEA : 123466403     Pottstown SD

Printed 1/4/2021 2:17:18 PM

General Fund (10)

2513 Receiving and Disbursing Funds Services	<u>Elementary</u>	<u>Secondary</u>	<u>Federal</u>	<u>Total</u>
100 <u>Personnel Services – Salaries</u>				
100 Personnel Services – Salaries				26,127.79
Total Personnel Services – Salaries				\$26,127.79
200 <u>Personnel Services – Employee Benefits</u>				
210 Group Insurance – Contracted Provider				6,761.84
220 Social Security Contributions				1,932.50
230 PSERS Retirement Contributions				8,959.24
Total Personnel Services – Employee Benefits				\$17,653.58
600 <u>Supplies</u>				
610 General Supplies				292.80
Total Supplies				\$292.80
Total 2513 Receiving and Disbursing Funds Services				\$44,074.17



LEA : 123466403     Pottstown SD

Printed 1/4/2021 2:17:18 PM

General Fund (10)

2514 Payroll Services

	<u>Elementary</u>	<u>Secondary</u>	<u>Federal</u>	<u>Total</u>
<b>100 <u>Personnel Services – Salaries</u></b>				
100 Personnel Services – Salaries			8,901.36	50,750.99
<b>Total Personnel Services – Salaries</b>			<b>\$8,901.36</b>	<b>\$50,750.99</b>
<b>200 <u>Personnel Services – Employee Benefits</u></b>				
210 Group Insurance – Contracted Provider			2,199.00	13,054.13
220 Social Security Contributions			664.94	3,776.66
230 PSERS Retirement Contributions			1,038.35	17,402.50
<b>Total Personnel Services – Employee Benefits</b>			<b>\$3,902.29</b>	<b>\$34,233.29</b>
<b>600 <u>Supplies</u></b>				
610 General Supplies				318.17
<b>Total Supplies</b>				<b>\$318.17</b>
<b>800 <u>Other Objects</u></b>				
810 Dues and Fees				172.22
<b>Total Other Objects</b>				<b>\$172.22</b>
<b>Total 2514 Payroll Services</b>			<b>\$12,803.65</b>	<b>\$85,474.67</b>

LEA : 123466403     Pottstown SD

Printed 1/4/2021 2:17:18 PM

General Fund (10)

2515 Financial Accounting Services	<u>Elementary</u>	<u>Secondary</u>	<u>Federal</u>	<u>Total</u>
<b>100 <u>Personnel Services – Salaries</u></b>				
100 Personnel Services – Salaries			16,530.11	70,691.32
<b>Total Personnel Services – Salaries</b>			<b>\$16,530.11</b>	<b>\$70,691.32</b>
<b>200 <u>Personnel Services – Employee Benefits</u></b>				
210 Group Insurance – Contracted Provider			3,978.85	12,290.48
220 Social Security Contributions			1,234.96	5,256.98
230 PSERS Retirement Contributions			1,700.46	24,240.02
<b>Total Personnel Services – Employee Benefits</b>			<b>\$6,914.27</b>	<b>\$41,787.48</b>
<b>500 <u>Other Purchased Services</u></b>				
520 Insurance – General				4,607.02
580 Travel				21.12
<b>Total Other Purchased Services</b>				<b>\$4,628.14</b>
<b>800 <u>Other Objects</u></b>				
810 Dues and Fees				45.00
<b>Total Other Objects</b>				<b>\$45.00</b>
<b>Total 2515 Financial Accounting Services</b>			<b>\$23,444.38</b>	<b>\$117,151.94</b>

LEA : 123466403     Pottstown SD

Printed 1/4/2021 2:17:18 PM

General Fund (10)				
2519 Other Fiscal Services	<u>Elementary</u>	<u>Secondary</u>	<u>Federal</u>	<u>Total</u>
300 <u>Purchased Professional and Technical Services</u>				
330 Other Professional Services				28,284.00
390 Other Purchased Professional and Technical Services				280.00
<b>Total Purchased Professional and Technical Services</b>				<b>\$28,564.00</b>
400 <u>Purchased Property Services</u>				
440 Rentals				5,188.92
<b>Total Purchased Property Services</b>				<b>\$5,188.92</b>
500 <u>Other Purchased Services</u>				
520 Insurance – General				300.00
530 Communications				14,254.06
580 Travel				317.47
<b>Total Other Purchased Services</b>				<b>\$14,871.53</b>
600 <u>Supplies</u>				
610 General Supplies				9,634.92
<b>Total Supplies</b>				<b>\$9,634.92</b>
800 <u>Other Objects</u>				
810 Dues and Fees				852.40
890 Miscellaneous Expenditures				1,264.02
<b>Total Other Objects</b>				<b>\$2,116.42</b>
<b>Total 2519 Other Fiscal Services</b>				<b>\$60,375.79</b>

LEA : 123466403     Pottstown SD

Printed 1/4/2021 2:17:18 PM

General Fund (10)

2530 Warehousing and Distributing Services	<u>Elementary</u>	<u>Secondary</u>	<u>Federal</u>	<u>Total</u>
300 <u>Purchased Professional and Technical Services</u>				
330 Other Professional Services				16,498.65
Total Purchased Professional and Technical Services				\$16,498.65
Total 2530 Warehousing and Distributing Services				\$16,498.65

LEA : 123466403     Pottstown SD

Printed 1/4/2021 2:17:18 PM

General Fund (10)

2540 Printing, Publishing and Duplicating Services	<u>Elementary</u>	<u>Secondary</u>	<u>Federal</u>	<u>Total</u>
400 <u>Purchased Property Services</u>				
440 Rentals				29,244.00
Total Purchased Property Services				\$29,244.00
600 <u>Supplies</u>				
610 General Supplies				14,440.27
Total Supplies				\$14,440.27
Total 2540 Printing, Publishing and Duplicating Services				\$43,684.27

LEA : 123466403     Pottstown SD

Printed 1/4/2021 2:17:18 PM

General Fund (10)				
2600 Operation and Maintenance of Plant Services	<u>Elementary</u>	<u>Secondary</u>	<u>Federal</u>	<u>Total</u>
100 <u>Personnel Services – Salaries</u>				
100 Personnel Services – Salaries				1,726,534.12
Total Personnel Services – Salaries				\$1,726,534.12
200 <u>Personnel Services – Employee Benefits</u>				
210 Group Insurance – Contracted Provider				323,730.28
220 Social Security Contributions				127,741.43
230 PSERS Retirement Contributions				577,177.95
Total Personnel Services – Employee Benefits				\$1,028,649.66
300 <u>Purchased Professional and Technical Services</u>				
330 Other Professional Services				34,185.75
350 Security / Safety Services				282,911.35
390 Other Purchased Professional and Technical Services				31,489.89
Total Purchased Professional and Technical Services				\$348,586.99
400 <u>Purchased Property Services</u>				
410 Cleaning Services				205,241.88
420 Utility Services				88,807.99
430 Repairs and Maintenance Services				405,107.05
440 Rentals				3,099.97
460 Extermination Services				7,340.99
490 Other Purchased Property Services				712.65
Total Purchased Property Services				\$710,310.53
500 <u>Other Purchased Services</u>				
523 General Property and Liability Insurance				27,636.00
529 Other Insurance				8,939.00
530 Communications				64,517.33
580 Travel				55.20
Total Other Purchased Services				\$101,147.53
600 <u>Supplies</u>				
610 General Supplies	313,567.40	209,044.93	44,294.21	566,906.54
620 Energy				535,535.72
Total Supplies	\$313,567.40	\$209,044.93	\$44,294.21	\$1,102,442.26
700 <u>Property</u>				
752 Capital Equipment – Original and Additional				60,972.09
762 Capitalized Equipment - Replacement				85,928.05
Total Property				\$146,900.14
800 <u>Other Objects</u>				
810 Dues and Fees				1,723.43
Total Other Objects				\$1,723.43
Total 2600 Operation and Maintenance of Plant Services	\$313,567.40	\$209,044.93	\$44,294.21	\$5,166,294.66

LEA : 123466403     Pottstown SD

Printed 1/4/2021 2:17:18 PM

General Fund (10)

2610 Supervision of Operation and Maintenance of Plant Services	<u>Elementary</u>	<u>Secondary</u>	<u>Federal</u>	<u>Total</u>
100 <u>Personnel Services – Salaries</u>				
100 Personnel Services – Salaries				146,733.53
Total Personnel Services – Salaries				\$146,733.53
200 <u>Personnel Services – Employee Benefits</u>				
210 Group Insurance – Contracted Provider				34,340.15
220 Social Security Contributions				10,762.97
230 PSERS Retirement Contributions				50,234.69
Total Personnel Services – Employee Benefits				\$95,337.81
Total 2610 Supervision of Operation and Maintenance of Plant Services				\$242,071.34

LEA : 123466403     Pottstown SD

Printed 1/4/2021 2:17:18 PM

General Fund (10)

2611 Supervision of Operation and Maintenance of Plant Services – Head of Component	<u>Elementary</u>	<u>Secondary</u>	<u>Federal</u>	<u>Total</u>
100 <u>Personnel Services – Salaries</u>				
100 Personnel Services – Salaries				146,733.53
Total Personnel Services – Salaries				\$146,733.53
200 <u>Personnel Services – Employee Benefits</u>				
210 Group Insurance – Contracted Provider				34,340.15
220 Social Security Contributions				10,762.97
230 PSERS Retirement Contributions				50,234.69
Total Personnel Services – Employee Benefits				\$95,337.81
Total 2611 Supervision of Operation and Maintenance of Plant Services – Head of Component				\$242,071.34



LEA : 123466403     Pottstown SD

Printed 1/4/2021 2:17:18 PM

General Fund (10)				
2620 Operation of Buildings Services	<u>Elementary</u>	<u>Secondary</u>	<u>Federal</u>	<u>Total</u>
100 <u>Personnel Services – Salaries</u>				
100 Personnel Services – Salaries				1,282,083.89
Total Personnel Services – Salaries				\$1,282,083.89
200 <u>Personnel Services – Employee Benefits</u>				
210 Group Insurance – Contracted Provider				243,396.19
220 Social Security Contributions				94,928.11
230 PSERS Retirement Contributions				429,440.09
Total Personnel Services – Employee Benefits				\$767,764.39
300 <u>Purchased Professional and Technical Services</u>				
350 Security / Safety Services				4,337.84
390 Other Purchased Professional and Technical Services				31,235.95
Total Purchased Professional and Technical Services				\$35,573.79
400 <u>Purchased Property Services</u>				
410 Cleaning Services				53,135.43
420 Utility Services				88,807.99
430 Repairs and Maintenance Services				252,070.52
440 Rentals				3,099.97
460 Extermination Services				7,340.99
Total Purchased Property Services				\$404,454.90
500 <u>Other Purchased Services</u>				
530 Communications				64,517.33
580 Travel				55.20
Total Other Purchased Services				\$64,572.53
600 <u>Supplies</u>				
610 General Supplies	225,925.97	150,617.32	44,294.21	420,837.50
620 Energy				530,858.65
Total Supplies	\$225,925.97	\$150,617.32	\$44,294.21	\$951,696.15
700 <u>Property</u>				
752 Capital Equipment – Original and Additional				1,361.20
762 Capitalized Equipment - Replacement				85,928.05
Total Property				\$87,289.25
800 <u>Other Objects</u>				
810 Dues and Fees				1,253.93
Total Other Objects				\$1,253.93
Total 2620 Operation of Buildings Services	\$225,925.97	\$150,617.32	\$44,294.21	\$3,594,688.83

LEA : 123466403     Pottstown SD

Printed 1/4/2021 2:17:18 PM

General Fund (10)				
2630 Care and Upkeep of Grounds Services	<u>Elementary</u>	<u>Secondary</u>	<u>Federal</u>	<u>Total</u>
100 <u>Personnel Services – Salaries</u>				
100 Personnel Services – Salaries				94,339.40
Total Personnel Services – Salaries				\$94,339.40
200 <u>Personnel Services – Employee Benefits</u>				
210 Group Insurance – Contracted Provider				26,138.27
220 Social Security Contributions				6,915.39
230 PSERS Retirement Contributions				32,349.03
Total Personnel Services – Employee Benefits				\$65,402.69
400 <u>Purchased Property Services</u>				
410 Cleaning Services				152,106.45
430 Repairs and Maintenance Services				150,058.14
Total Purchased Property Services				\$302,164.59
600 <u>Supplies</u>				
610 General Supplies	6,964.02	4,642.68		11,606.70
Total Supplies	\$6,964.02	\$4,642.68		\$11,606.70
Total 2630 Care and Upkeep of Grounds Services	\$6,964.02	\$4,642.68		\$473,513.38

LEA : 123466403     Pottstown SD

Printed 1/4/2021 2:17:18 PM

General Fund (10)

2640 Care and Upkeep of Equipment Services	<u>Elementary</u>	<u>Secondary</u>	<u>Federal</u>	<u>Total</u>
400 <u>Purchased Property Services</u>				
490 Other Purchased Property Services				712.65
Total Purchased Property Services				\$712.65
600 <u>Supplies</u>				
610 General Supplies	559.25	372.83		932.08
Total Supplies	\$559.25	\$372.83		\$932.08
Total 2640 Care and Upkeep of Equipment Services	\$559.25	\$372.83		\$1,644.73

LEA : 123466403     Pottstown SD

Printed 1/4/2021 2:17:18 PM

<b>General Fund (10)</b>				
<b>2650 Vehicle Operation and Maintenance Services (Other Than Student Transportation Vehicles)</b>	<b><u>Elementary</u></b>	<b><u>Secondary</u></b>	<b><u>Federal</u></b>	<b><u>Total</u></b>
<b>400 <u>Purchased Property Services</u></b>				
430 Repairs and Maintenance Services				2,636.39
<b>Total Purchased Property Services</b>				<b>\$2,636.39</b>
<b>600 <u>Supplies</u></b>				
610 General Supplies	451.81	301.20		753.01
620 Energy				4,677.07
<b>Total Supplies</b>	<b>\$451.81</b>	<b>\$301.20</b>		<b>\$5,430.08</b>
<b>700 <u>Property</u></b>				
752 Capital Equipment – Original and Additional				29,595.00
<b>Total Property</b>				<b>\$29,595.00</b>
<b>Total 2650 Vehicle Operation and Maintenance Services (Other Than Student Transportation Vehicles)</b>	<b>\$451.81</b>	<b>\$301.20</b>		<b>\$37,661.47</b>

LEA : 123466403     Pottstown SD

Printed 1/4/2021 2:17:18 PM

General Fund (10)				
2660 Safety and Security Services	<u>Elementary</u>	<u>Secondary</u>	<u>Federal</u>	<u>Total</u>
100 <u>Personnel Services – Salaries</u>				
100 Personnel Services – Salaries				203,047.36
Total Personnel Services – Salaries				\$203,047.36
200 <u>Personnel Services – Employee Benefits</u>				
210 Group Insurance – Contracted Provider				19,855.67
220 Social Security Contributions				15,109.73
230 PSERS Retirement Contributions				65,154.14
Total Personnel Services – Employee Benefits				\$100,119.54
300 <u>Purchased Professional and Technical Services</u>				
330 Other Professional Services				34,185.75
350 Security / Safety Services				278,573.51
Total Purchased Professional and Technical Services				\$312,759.26
400 <u>Purchased Property Services</u>				
430 Repairs and Maintenance Services				342.00
Total Purchased Property Services				\$342.00
600 <u>Supplies</u>				
610 General Supplies	79,157.40	52,771.60		131,929.00
Total Supplies	\$79,157.40	\$52,771.60		\$131,929.00
700 <u>Property</u>				
752 Capital Equipment – Original and Additional				30,015.89
Total Property				\$30,015.89
Total 2660 Safety and Security Services	\$79,157.40	\$52,771.60		\$778,213.05

LEA : 123466403     Pottstown SD

Printed 1/4/2021 2:17:18 PM

General Fund (10)				
2690 Other Operation and Maintenance of Plant Services	<u>Elementary</u>	<u>Secondary</u>	<u>Federal</u>	<u>Total</u>
100 <u>Personnel Services – Salaries</u>				
100 Personnel Services – Salaries				329.94
Total Personnel Services – Salaries				\$329.94
200 <u>Personnel Services – Employee Benefits</u>				
220 Social Security Contributions				25.23
Total Personnel Services – Employee Benefits				\$25.23
300 <u>Purchased Professional and Technical Services</u>				
390 Other Purchased Professional and Technical Services				253.94
Total Purchased Professional and Technical Services				\$253.94
500 <u>Other Purchased Services</u>				
523 General Property and Liability Insurance				27,636.00
529 Other Insurance				8,939.00
Total Other Purchased Services				\$36,575.00
600 <u>Supplies</u>				
610 General Supplies	508.95	339.30		848.25
Total Supplies	\$508.95	\$339.30		\$848.25
800 <u>Other Objects</u>				
810 Dues and Fees				469.50
Total Other Objects				\$469.50
Total 2690 Other Operation and Maintenance of Plant Services	\$508.95	\$339.30		\$38,501.86

LEA : 123466403     Pottstown SD

Printed 1/4/2021 2:17:18 PM

General Fund (10)				
2700 Student Transportation Services	<u>Elementary</u>	<u>Secondary</u>	<u>Federal</u>	<u>Total</u>
100 <u>Personnel Services – Salaries</u>				
100 Personnel Services – Salaries				80.00
Total Personnel Services – Salaries				\$80.00
200 <u>Personnel Services – Employee Benefits</u>				
220 Social Security Contributions				6.12
230 PSERS Retirement Contributions				27.43
Total Personnel Services – Employee Benefits				\$33.55
300 <u>Purchased Professional and Technical Services</u>				
329 Professional Educational Services – Other				62,500.00
Total Purchased Professional and Technical Services				\$62,500.00
500 <u>Other Purchased Services</u>				
513 Contracted Carriers			189,830.09	1,547,374.34
516 Student Transportation Services From the IU				385,072.88
522 Automotive Liability Insurance				9,529.00
Total Other Purchased Services			\$189,830.09	\$1,941,976.22
600 <u>Supplies</u>				
610 General Supplies				5,620.00
Total Supplies				\$5,620.00
Total 2700 Student Transportation Services			\$189,830.09	\$2,010,209.77

LEA : 123466403     Pottstown SD

Printed 1/4/2021 2:17:18 PM

General Fund (10)				
2710 Supervision of Student Transportation Services	<u>Elementary</u>	<u>Secondary</u>	<u>Federal</u>	<u>Total</u>
100 <u>Personnel Services – Salaries</u>				
100 Personnel Services – Salaries				80.00
Total Personnel Services – Salaries				\$80.00
200 <u>Personnel Services – Employee Benefits</u>				
220 Social Security Contributions				6.12
230 PSERS Retirement Contributions				27.43
Total Personnel Services – Employee Benefits				\$33.55
300 <u>Purchased Professional and Technical Services</u>				
329 Professional Educational Services – Other				62,500.00
Total Purchased Professional and Technical Services				\$62,500.00
500 <u>Other Purchased Services</u>				
513 Contracted Carriers			189,830.09	1,486,102.91
516 Student Transportation Services From the IU				385,072.88
522 Automotive Liability Insurance				9,529.00
Total Other Purchased Services			\$189,830.09	\$1,880,704.79
600 <u>Supplies</u>				
610 General Supplies				5,620.00
Total Supplies				\$5,620.00
Total 2710 Supervision of Student Transportation Services			\$189,830.09	\$1,948,938.34



LEA : 123466403     Pottstown SD

Printed 1/4/2021 2:17:18 PM

General Fund (10)				
2719 Supervision of Student Transportation Services – All Other Supervision	<u>Elementary</u>	<u>Secondary</u>	<u>Federal</u>	<u>Total</u>
100 <u>Personnel Services – Salaries</u>				
100 Personnel Services – Salaries				80.00
Total Personnel Services – Salaries				\$80.00
200 <u>Personnel Services – Employee Benefits</u>				
220 Social Security Contributions				6.12
230 PSERS Retirement Contributions				27.43
Total Personnel Services – Employee Benefits				\$33.55
300 <u>Purchased Professional and Technical Services</u>				
329 Professional Educational Services – Other				62,500.00
Total Purchased Professional and Technical Services				\$62,500.00
500 <u>Other Purchased Services</u>				
513 Contracted Carriers			189,830.09	1,486,102.91
516 Student Transportation Services From the IU				385,072.88
522 Automotive Liability Insurance				9,529.00
Total Other Purchased Services			\$189,830.09	\$1,880,704.79
600 <u>Supplies</u>				
610 General Supplies				5,620.00
Total Supplies				\$5,620.00
Total 2719 Supervision of Student Transportation Services – All Other Supervision			\$189,830.09	\$1,948,938.34

LEA : 123466403     Pottstown SD

Printed 1/4/2021 2:17:18 PM

General Fund (10)

2750 Nonpublic Transportation	<u>Elementary</u>	<u>Secondary</u>	<u>Federal</u>	<u>Total</u>
500 <u>Other Purchased Services</u>				
513 Contracted Carriers				61,271.43
Total Other Purchased Services				\$61,271.43
Total 2750 Nonpublic Transportation				\$61,271.43

LEA : 123466403     Pottstown SD

Printed 1/4/2021 2:17:18 PM

General Fund (10)				
2800 Support Services – Central	<u>Elementary</u>	<u>Secondary</u>	<u>Federal</u>	<u>Total</u>
100 <u>Personnel Services – Salaries</u>				
100 Personnel Services – Salaries				297,349.33
Total Personnel Services – Salaries				\$297,349.33
200 <u>Personnel Services – Employee Benefits</u>				
210 Group Insurance – Contracted Provider				65,355.25
220 Social Security Contributions				21,726.20
230 PSERS Retirement Contributions				101,853.22
Total Personnel Services – Employee Benefits				\$188,934.67
500 <u>Other Purchased Services</u>				
530 Communications				408.38
580 Travel				495.31
Total Other Purchased Services				\$903.69
600 <u>Supplies</u>				
610 General Supplies				29,953.90
650 Supplies & Fees – Technology Related				64,409.29
Total Supplies				\$94,363.19
700 <u>Property</u>				
752 Capital Equipment – Original and Additional				300.00
Total Property				\$300.00
800 <u>Other Objects</u>				
810 Dues and Fees				100.00
Total Other Objects				\$100.00
Total 2800 Support Services – Central				\$581,950.88

LEA : 123466403     Pottstown SD

Printed 1/4/2021 2:17:18 PM

General Fund (10)				
2830 Staff Services				
	<u>Elementary</u>	<u>Secondary</u>	<u>Federal</u>	<u>Total</u>
100 <u>Personnel Services – Salaries</u>				
100 Personnel Services – Salaries				168,385.43
Total Personnel Services – Salaries				\$168,385.43
200 <u>Personnel Services – Employee Benefits</u>				
210 Group Insurance – Contracted Provider				23,604.20
220 Social Security Contributions				12,165.87
230 PSERS Retirement Contributions				57,616.94
Total Personnel Services – Employee Benefits				\$93,387.01
500 <u>Other Purchased Services</u>				
530 Communications				408.38
Total Other Purchased Services				\$408.38
600 <u>Supplies</u>				
610 General Supplies				170.30
Total Supplies				\$170.30
700 <u>Property</u>				
752 Capital Equipment – Original and Additional				300.00
Total Property				\$300.00
Total 2830 Staff Services				\$262,651.12

LEA : 123466403     Pottstown SD

Printed 1/4/2021 2:17:18 PM

General Fund (10)				
2831 Supervision of Staff Services	<u>Elementary</u>	<u>Secondary</u>	<u>Federal</u>	<u>Total</u>
100 <u>Personnel Services – Salaries</u>				
100 Personnel Services – Salaries				168,385.43
Total Personnel Services – Salaries				\$168,385.43
200 <u>Personnel Services – Employee Benefits</u>				
210 Group Insurance – Contracted Provider				23,604.20
220 Social Security Contributions				12,165.87
230 PSERS Retirement Contributions				57,616.94
Total Personnel Services – Employee Benefits				\$93,387.01
500 <u>Other Purchased Services</u>				
530 Communications				408.38
Total Other Purchased Services				\$408.38
600 <u>Supplies</u>				
610 General Supplies				170.30
Total Supplies				\$170.30
700 <u>Property</u>				
752 Capital Equipment – Original and Additional				300.00
Total Property				\$300.00
Total 2831 Supervision of Staff Services				\$262,651.12

LEA : 123466403     Pottstown SD

Printed 1/4/2021 2:17:18 PM

General Fund (10)				
2840 Data Processing Services	<u>Elementary</u>	<u>Secondary</u>	<u>Federal</u>	<u>Total</u>
100 <u>Personnel Services – Salaries</u>				
100 Personnel Services – Salaries				128,963.90
Total Personnel Services – Salaries				\$128,963.90
200 <u>Personnel Services – Employee Benefits</u>				
210 Group Insurance – Contracted Provider				41,751.05
220 Social Security Contributions				9,560.33
230 PSERS Retirement Contributions				44,236.28
Total Personnel Services – Employee Benefits				\$95,547.66
500 <u>Other Purchased Services</u>				
580 Travel				495.31
Total Other Purchased Services				\$495.31
600 <u>Supplies</u>				
610 General Supplies				29,783.60
650 Supplies & Fees – Technology Related				64,409.29
Total Supplies				\$94,192.89
Total 2840 Data Processing Services				\$319,199.76

LEA : 123466403     Pottstown SD

Printed 1/4/2021 2:17:18 PM

General Fund (10)

2850 State and Federal Agency Liaison Services	<u>Elementary</u>	<u>Secondary</u>	<u>Federal</u>	<u>Total</u>
800 <u>Other Objects</u>				
810 Dues and Fees				100.00
Total Other Objects				\$100.00
Total 2850 State and Federal Agency Liaison Services				\$100.00

LEA : 123466403     Pottstown SD

Printed 1/4/2021 2:17:18 PM

General Fund (10)

2900 Other Support Services	<u>Elementary</u>	<u>Secondary</u>	<u>Federal</u>	<u>Total</u>
500 <u>Other Purchased Services</u>				
595 IU Payments By Withholding				17,163.69
Total Other Purchased Services				\$17,163.69
Total 2900 Other Support Services				\$17,163.69



LEA : 123466403     Pottstown SD

Printed 1/4/2021 2:17:18 PM

General Fund (10)

2910 Support Services Not Listed Elsewhere In the 2000 Series

Elementary                      Secondary                      Federal                      Total

500 Other Purchased Services

595 IU Payments By Withholding 17,163.69

**Total Other Purchased Services \$17,163.69**

**Total 2910 Support Services Not Listed Elsewhere In the 2000 Series \$17,163.69**

LEA : 123466403     Pottstown SD

Printed 1/4/2021 2:17:30 PM

<b>General Fund (10)</b>	
<b>3000 Operation of Non-Instructional Services</b>	<b><u>Total</u></b>
<b>100 <u>Personnel Services – Salaries</u></b>	
100 Personnel Services – Salaries	459,904.14
<b>Total Personnel Services – Salaries</b>	<b>\$459,904.14</b>
<b>200 <u>Personnel Services – Employee Benefits</u></b>	
210 Group Insurance – Contracted Provider	19,481.64
220 Social Security Contributions	36,826.90
230 PSERS Retirement Contributions	141,321.66
<b>Total Personnel Services – Employee Benefits</b>	<b>\$197,630.20</b>
<b>300 <u>Purchased Professional and Technical Services</u></b>	
330 Other Professional Services	2,769.18
350 Security / Safety Services	9,384.00
390 Other Purchased Professional and Technical Services	37,614.88
<b>Total Purchased Professional and Technical Services</b>	<b>\$49,768.06</b>
<b>400 <u>Purchased Property Services</u></b>	
430 Repairs and Maintenance Services	660.46
440 Rentals	3,117.34
<b>Total Purchased Property Services</b>	<b>\$3,777.80</b>
<b>500 <u>Other Purchased Services</u></b>	
510 Student Transportation Services	45,029.80
520 Insurance – General	2,580.00
530 Communications	1,183.41
580 Travel	805.41
<b>Total Other Purchased Services</b>	<b>\$49,598.62</b>
<b>600 <u>Supplies</u></b>	
610 General Supplies	111,718.65
<b>Total Supplies</b>	<b>\$111,718.65</b>
<b>800 <u>Other Objects</u></b>	
810 Dues and Fees	7,820.42
860 Grants To Municipal and Community Service Organizations	20,000.00
890 Miscellaneous Expenditures	150.00
<b>Total Other Objects</b>	<b>\$27,970.42</b>
<b>Total 3000 Operation of Non-Instructional Services</b>	<b>\$900,367.89</b>

LEA : 123466403     Pottstown SD

Printed 1/4/2021 2:17:30 PM

General Fund (10)				
3200 Student Activities				
	<u>Elementary</u>	<u>Secondary</u>	<u>Federal</u>	<u>Total</u>
100 <u>Personnel Services – Salaries</u>				
100 Personnel Services – Salaries				439,243.48
Total Personnel Services – Salaries				\$439,243.48
200 <u>Personnel Services – Employee Benefits</u>				
210 Group Insurance – Contracted Provider				19,474.59
220 Social Security Contributions				33,974.98
230 PSERS Retirement Contributions				134,257.94
Total Personnel Services – Employee Benefits				\$187,707.51
300 <u>Purchased Professional and Technical Services</u>				
330 Other Professional Services				2,769.18
350 Security / Safety Services				9,384.00
390 Other Purchased Professional and Technical Services				17,614.88
Total Purchased Professional and Technical Services				\$29,768.06
400 <u>Purchased Property Services</u>				
430 Repairs and Maintenance Services				660.46
440 Rentals				3,117.34
Total Purchased Property Services				\$3,777.80
500 <u>Other Purchased Services</u>				
510 Student Transportation Services				45,029.80
520 Insurance – General				2,580.00
530 Communications				1,183.41
580 Travel				805.41
Total Other Purchased Services				\$49,598.62
600 <u>Supplies</u>				
610 General Supplies				111,718.65
Total Supplies				\$111,718.65
800 <u>Other Objects</u>				
810 Dues and Fees				7,820.42
Total Other Objects				\$7,820.42
Total 3200 Student Activities				\$829,634.54

LEA : 123466403     Pottstown SD

Printed 1/4/2021 2:17:30 PM

General Fund (10)

3300 Community Services

Elementary                      Secondary                      Federal                      Total

100 <u>Personnel Services – Salaries</u>				
100 Personnel Services – Salaries				20,660.66
<b>Total Personnel Services – Salaries</b>				<b>\$20,660.66</b>
200 <u>Personnel Services – Employee Benefits</u>				
210 Group Insurance – Contracted Provider				7.05
220 Social Security Contributions				2,851.92
230 PSERS Retirement Contributions				7,063.72
<b>Total Personnel Services – Employee Benefits</b>				<b>\$9,922.69</b>
300 <u>Purchased Professional and Technical Services</u>				
390 Other Purchased Professional and Technical Services				20,000.00
<b>Total Purchased Professional and Technical Services</b>				<b>\$20,000.00</b>
800 <u>Other Objects</u>				
860 Grants To Municipal and Community Service Organizations				20,000.00
890 Miscellaneous Expenditures				150.00
<b>Total Other Objects</b>				<b>\$20,150.00</b>
<b>Total 3300 Community Services</b>				<b>\$70,733.35</b>

LEA : 123466403     Pottstown SD

Printed 1/4/2021 2:17:45 PM

General Fund (10)

4000 Facilities Acquisition, Construction and Improvement Services	<u>Total</u>
400 <u>Purchased Property Services</u>	
450 Construction Services	770,093.37
Total Purchased Property Services	\$770,093.37
Total 4000 Facilities Acquisition, Construction and Improvement Services	\$770,093.37

LEA : 123466403     Pottstown SD

Printed 1/4/2021 2:17:45 PM

General Fund (10)

4200 Existing Site Improvement Services	<u>Elementary</u>	<u>Secondary</u>	<u>Federal</u>	<u>Total</u>
400 <u>Purchased Property Services</u>				
450 Construction Services				24,900.00
<b>Total Purchased Property Services</b>				<b>\$24,900.00</b>
<b>Total 4200 Existing Site Improvement Services</b>				<b>\$24,900.00</b>

LEA : 123466403     Pottstown SD

Printed 1/4/2021 2:17:45 PM

General Fund (10)

4600 Existing Building Improvement Services	<u>Elementary</u>	<u>Secondary</u>	<u>Federal</u>	<u>Total</u>
400 <u>Purchased Property Services</u>				
450 Construction Services				745,193.37
Total Purchased Property Services				\$745,193.37
Total 4600 Existing Building Improvement Services				\$745,193.37

LEA : 123466403     Pottstown SD

Printed 1/4/2021 2:17:56 PM

General Fund (10)	
5000 Other Expenditures and Financing Uses	<u>Total</u>
800 <u>Other Objects</u>	
830 Interest	1,223,334.19
880 Refunds of Prior Years' Receipts	55,732.42
Total Other Objects	\$1,279,066.61
900 <u>Other Uses of Funds</u>	
910 Redemption of Principal	2,432,000.00
Total Other Uses of Funds	\$2,432,000.00
Total 5000 Other Expenditures and Financing Uses	\$3,711,066.61



LEA : 123466403     Pottstown SD

Printed 1/4/2021 2:17:56 PM

General Fund (10)

5100 Debt Service / Other Expenditures and Financing Uses	<u>Elementary</u>	<u>Secondary</u>	<u>Federal</u>	<u>Total</u>
800 <u>Other Objects</u>				
830 Interest				1,223,334.19
880 Refunds of Prior Years' Receipts				55,732.42
Total Other Objects				\$1,279,066.61
900 <u>Other Uses of Funds</u>				
910 Redemption of Principal				2,432,000.00
Total Other Uses of Funds				\$2,432,000.00
Total 5100 Debt Service / Other Expenditures and Financing Uses				\$3,711,066.61

LEA : 123466403     Pottstown SD

Printed 1/4/2021 2:17:56 PM

General Fund (10)				
5110 Debt Service	<u>Elementary</u>	<u>Secondary</u>	<u>Federal</u>	<u>Total</u>
800 <u>Other Objects</u>				
830 Interest				1,223,334.19
Total Other Objects				\$1,223,334.19
900 <u>Other Uses of Funds</u>				
910 Redemption of Principal				2,432,000.00
Total Other Uses of Funds				\$2,432,000.00
Total 5110 Debt Service				\$3,655,334.19

LEA : 123466403     Pottstown SD

Printed 1/4/2021 2:17:56 PM

General Fund (10)

5130 Refund of Prior Year Revenues / Receipts	<u>Elementary</u>	<u>Secondary</u>	<u>Federal</u>	<u>Total</u>
800 <u>Other Objects</u>				
880 Refunds of Prior Years' Receipts				55,732.42
Total Other Objects				\$55,732.42
Total 5130 Refund of Prior Year Revenues / Receipts				\$55,732.42

LEA : 123466403     Pottstown SD

Printed 1/4/2021 2:17:39 PM

Athletic / School-Sponsored Extra Curricular Activities Fund (29)

3000 Operation of Non-Instructional Services	<u>Total</u>
300 <u>Purchased Professional and Technical Services</u>	
390 Other Purchased Professional and Technical Services	31,010.00
<b>Total Purchased Professional and Technical Services</b>	<b>\$31,010.00</b>
<b>Total 3000 Operation of Non-Instructional Services</b>	<b>\$31,010.00</b>

LEA : 123466403     Pottstown SD

Printed 1/4/2021 2:17:39 PM

Athletic / School-Sponsored Extra Curricular Activities Fund (29)

3200 Student Activities	<u>Elementary</u>	<u>Secondary</u>	<u>Federal</u>	<u>Total</u>
300 <u>Purchased Professional and Technical Services</u>				
390 Other Purchased Professional and Technical Services				31,010.00
<b>Total Purchased Professional and Technical Services</b>				<b>\$31,010.00</b>
<b>Total 3200 Student Activities</b>				<b>\$31,010.00</b>

LEA : 123466403     Pottstown SD

Printed 1/4/2021 2:17:23 PM

Debt Service Fund (40)

2000 Support Services

Total

800 Other Objects

810 Dues and Fees

455,002.24

Total Other Objects	\$455,002.24
Total 2000 Support Services	\$455,002.24

LEA : 123466403     Pottstown SD

Printed 1/4/2021 2:17:23 PM

Debt Service Fund (40)

2300 Support Services – Administration

Elementary                      Secondary                      Federal                      Total

800 Other Objects

810 Dues and Fees 455,002.24

**Total Other Objects \$455,002.24**

**Total 2300 Support Services – Administration \$455,002.24**

LEA : 123466403     Pottstown SD

Printed 1/4/2021 2:17:23 PM

Debt Service Fund (40)				
2310 Board Services	<u>Elementary</u>	<u>Secondary</u>	<u>Federal</u>	<u>Total</u>
800 <u>Other Objects</u>				
810 Dues and Fees				358,219.04
Total Other Objects				\$358,219.04
Total 2310 Board Services				\$358,219.04



LEA : 123466403     Pottstown SD

Printed 1/4/2021 2:17:23 PM

Debt Service Fund (40)

2390 Other Administration Services

<u>Elementary</u>	<u>Secondary</u>	<u>Federal</u>	<u>Total</u>
-------------------	------------------	----------------	--------------

800 Other Objects

810 Dues and Fees			96,783.20
-------------------	--	--	-----------

<b>Total Other Objects</b>			<b>\$96,783.20</b>
----------------------------	--	--	--------------------

<b>Total 2390 Other Administration Services</b>			<b>\$96,783.20</b>
---	--	--	--------------------

LEA : 123466403     Pottstown SD

Printed 1/4/2021 2:17:58 PM

Debt Service Fund (40)

5000 Other Expenditures and Financing Uses

Total

800 <u>Other Objects</u>	
830 Interest	36,376.56
Total Other Objects	\$36,376.56
900 <u>Other Uses of Funds</u>	
910 Redemption of Principal	19,892,105.18
Total Other Uses of Funds	\$19,892,105.18
Total 5000 Other Expenditures and Financing Uses	\$19,928,481.74

LEA : 123466403     Pottstown SD

Printed 1/4/2021 2:17:58 PM

Debt Service Fund (40)

5100 Debt Service / Other Expenditures and Financing Uses	<u>Elementary</u>	<u>Secondary</u>	<u>Federal</u>	<u>Total</u>
800 <u>Other Objects</u>				
830 Interest				36,376.56
Total Other Objects				\$36,376.56
900 <u>Other Uses of Funds</u>				
910 Redemption of Principal				19,892,105.18
Total Other Uses of Funds				\$19,892,105.18
Total 5100 Debt Service / Other Expenditures and Financing Uses				\$19,928,481.74

LEA : 123466403     Pottstown SD

Printed 1/4/2021 2:17:58 PM

Debt Service Fund (40)

5110 Debt Service	<u>Elementary</u>	<u>Secondary</u>	<u>Federal</u>	<u>Total</u>
800 <u>Other Objects</u>				
830 Interest				36,376.56
Total Other Objects				\$36,376.56
Total 5110 Debt Service				\$36,376.56

LEA : 123466403     Pottstown SD

Printed 1/4/2021 2:17:58 PM

Debt Service Fund (40)

5120 Debt Service – Refunded Bonds

<u>Elementary</u>	<u>Secondary</u>	<u>Federal</u>	<u>Total</u>
-------------------	------------------	----------------	--------------

900 Other Uses of Funds

910 Redemption of Principal			19,892,105.18
-----------------------------	--	--	---------------

Total Other Uses of Funds				\$19,892,105.18
Total 5120 Debt Service – Refunded Bonds				\$19,892,105.18

LEA : 123466403     Pottstown SD

Printed 1/4/2021 2:18:21 PM

	<u>General Fund(10)</u>	<u>Student Sponsored Activity Fund(21)</u>	<u>Public Purpose Trust(27)</u>	<u>Other Compt Approved (28)</u>	<u>Athletic / Activity(29)</u>
<b>1000 <u>Instruction</u></b>					
1100 Regular Programs - Elementary / Secondary	20,029,213.01				
1200 Special Programs - Elementary / Secondary	13,850,054.72				
1300 Vocational Education	1,261,218.45				
1400 Other Instructional Programs - Elementary / Secondary	2,241,467.64				
1800 Pre-Kindergarten	2,574,823.89				
<b>Total Instruction</b>	<b>\$39,956,777.71</b>				
<b>2000 <u>Support Services</u></b>					
2100 Support Services - Students	2,241,576.22				
2200 Support Services - Instructional Staff	2,699,503.06				
2300 Support Services - Administration	3,548,904.04				
2400 Support Services - Pupil Health	996,545.77				
2500 Support Services - Business	844,510.71				
2600 Operation and Maintenance of Plant Services	5,166,294.66				
2700 Student Transportation Services	2,010,209.77				
2800 Support Services - Central	581,950.88				
2900 Other Support Services	17,163.69				
<b>Total Support Services</b>	<b>\$18,106,658.80</b>				
<b>3000 <u>Operation of Non-Instructional Services</u></b>					
3200 Student Activities	829,634.54				31,010.00
3300 Community Services	70,733.35				
<b>Total Operation of Non-Instructional Services</b>	<b>\$900,367.89</b>				<b>\$31,010.00</b>
<b>4000 <u>Facilities Acquisition, Construction and Improvement Services</u></b>					
4200 Existing Site Improvement Services	24,900.00				
4600 Existing Building Improvement Services	745,193.37				
<b>Total Facilities Acquisition, Construction and Improvement Services</b>	<b>\$770,093.37</b>				
<b>5000 <u>Other Expenditures and Financing Uses</u></b>					
5100 Debt Service / Other Expenditures and Financing Uses	3,711,066.61				
<b>Total Other Expenditures and Financing Uses</b>	<b>\$3,711,066.61</b>				
<b>TOTAL ACTUAL EXPENDITURES &amp; OTHER FINANCING USES</b>	<b>\$63,444,964.38</b>				<b>\$31,010.00</b>

LEA : 123466403     Pottstown SD

Printed 1/4/2021 2:18:21 PM

	<u>Capital Reserve (690.</u>	<u>Capital Reserve (1431)(32)</u>	<u>Other Capital Projects</u>	<u>Debt Service(40)</u>	<u>Permanent(90)</u>
	<u>1850)(31)</u>		<u>Fund(39)</u>		
<b>1000 <u>Instruction</u></b>					
1100 Regular Programs - Elementary / Secondary					
1200 Special Programs - Elementary / Secondary					
1300 Vocational Education					
1400 Other Instructional Programs - Elementary / Secondary					
1800 Pre-Kindergarten					
<b>Total Instruction</b>					
<b>2000 <u>Support Services</u></b>					
2100 Support Services - Students					
2200 Support Services - Instructional Staff					
2300 Support Services - Administration				455,002.24	
2400 Support Services - Pupil Health					
2500 Support Services - Business					
2600 Operation and Maintenance of Plant Services					
2700 Student Transportation Services					
2800 Support Services - Central					
2900 Other Support Services					
<b>Total Support Services</b>				<b>\$455,002.24</b>	
<b>3000 <u>Operation of Non-Instructional Services</u></b>					
3200 Student Activities					
3300 Community Services					
<b>Total Operation of Non-Instructional Services</b>					
<b>4000 <u>Facilities Acquisition, Construction and Improvement Services</u></b>					
4200 Existing Site Improvement Services					
4600 Existing Building Improvement Services					
<b>Total Facilities Acquisition, Construction and Improvement Services</b>					
<b>5000 <u>Other Expenditures and Financing Uses</u></b>					
5100 Debt Service / Other Expenditures and Financing Uses				19,928,481.74	
<b>Total Other Expenditures and Financing Uses</b>				<b>\$19,928,481.74</b>	
<b>TOTAL ACTUAL EXPENDITURES &amp; OTHER FINANCING USES</b>				<b>\$20,383,483.98</b>	

LEA : 123466403     Pottstown SD

Printed 1/4/2021 2:18:21 PM

	<u>Total</u>
<b>1000 <u>Instruction</u></b>	
1100 Regular Programs - Elementary / Secondary	20,029,213.01
1200 Special Programs - Elementary / Secondary	13,850,054.72
1300 Vocational Education	1,261,218.45
1400 Other Instructional Programs - Elementary / Secondary	2,241,467.64
1800 Pre-Kindergarten	2,574,823.89
<b>Total Instruction</b>	<b>\$39,956,777.71</b>
<b>2000 <u>Support Services</u></b>	
2100 Support Services - Students	2,241,576.22
2200 Support Services - Instructional Staff	2,699,503.06
2300 Support Services - Administration	4,003,906.28
2400 Support Services - Pupil Health	996,545.77
2500 Support Services - Business	844,510.71
2600 Operation and Maintenance of Plant Services	5,166,294.66
2700 Student Transportation Services	2,010,209.77
2800 Support Services - Central	581,950.88
2900 Other Support Services	17,163.69
<b>Total Support Services</b>	<b>\$18,561,661.04</b>
<b>3000 <u>Operation of Non-Instructional Services</u></b>	
3200 Student Activities	860,644.54
3300 Community Services	70,733.35
<b>Total Operation of Non-Instructional Services</b>	<b>\$931,377.89</b>
<b>4000 <u>Facilities Acquisition, Construction and Improvement Services</u></b>	
4200 Existing Site Improvement Services	24,900.00
4600 Existing Building Improvement Services	745,193.37
<b>Total Facilities Acquisition, Construction and Improvement Services</b>	<b>\$770,093.37</b>
<b>5000 <u>Other Expenditures and Financing Uses</u></b>	
5100 Debt Service / Other Expenditures and Financing Uses	23,639,548.35
<b>Total Other Expenditures and Financing Uses</b>	<b>\$23,639,548.35</b>
<b>TOTAL ACTUAL EXPENDITURES &amp; OTHER FINANCING USES</b>	<b>\$83,859,458.36</b>



LEA : 123466403     Pottstown SD

Printed 1/4/2021 2:18:36 PM

PSERS Salary Data (Salary Data should relate to the General Fund only)

Amount	Description	Amount
	Total Salary Base for salaries subject to PSERS withholding	23,806,477.52
	Total Federally Funded salaries subject to PSERS withholding	1,896,282.52

Title I Expenditure Data

Amount	Description	Amount
	Expenditures Funded with Current Title I Funds	1,690,507.64
	Expenditures Funded with Carry over Title I Funds	
Total Title I Expenditure Data		\$1,690,507.64

Benefits for Staff Relative to Collective Bargaining Agreements

	OBJECT	COVERED	NOT COVERED	TOTAL
10 General Fund				
	211 Medical Insurance			
	212 Dental Insurance	117,166.01	177,211.10	294,377.11
	215 Eye Care Insurance	3,240.01	17,285.99	20,526.00
	216 Prescription Insurance			
	271 Self-Insurance Medical Benefits	2,320,509.78	1,158,173.64	3,478,683.42
	272 Self-Insurance Dental Benefits			
	275 Self-Insurance Eye Care Benefits			
	276 Self-Insurance Prescription Benefits	619,464.48	539,848.10	1,159,312.58
	FUND TOTAL	\$3,060,380.28	\$1,892,518.83	\$4,952,899.11
50 Enterprise Fund				
	211 Medical Insurance			
	212 Dental Insurance	14,281.05		14,281.05
	215 Eye Care Insurance	770.56		770.56
	216 Prescription Insurance			
	271 Self-Insurance Medical Benefits	98,606.87		98,606.87
	272 Self-Insurance Dental Benefits			
	275 Self-Insurance Eye Care Benefits			
	276 Self-Insurance Prescription Benefits	38,642.81		38,642.81
	FUND TOTAL	\$152,301.29		\$152,301.29
60 Internal Service Fund	No Self Insurance data to report			
	211 Medical Insurance			
	212 Dental Insurance			
	215 Eye Care Insurance			
	216 Prescription Insurance			
	271 Self-Insurance Medical Benefits			
	272 Self-Insurance Dental Benefits			
	275 Self-Insurance Eye Care Benefits			
	276 Self-Insurance Prescription Benefits			
	FUND TOTAL			
Total of All Funds		\$3,212,681.57	\$1,892,518.83	\$5,105,200.40

LEA : 123466403     Pottstown SD

Printed 1/4/2021 2:18:50 PM

Function	Special Education (Prior Year)	Nonspecial Education (Prior Year)	Total (Prior Year)	Special Education (Current Year)	Nonspecial Education (Current Year)	Total (Current Year)
2120 Guidance Services		477,855.47	477,855.47		492,849.57	492,849.57
2140 Psychological Services	639,206.44	159,801.61	799,008.05	746,753.21	186,688.31	933,441.52
2150 Speech Pathology and Audiology Services	567,892.18		567,892.18	620,335.30		620,335.30
2160 Social Work Services	27,559.31	18,372.87	45,932.18	30,600.70	20,400.47	51,001.17
2260 Instruction and Curriculum Development Services		352,596.01	352,596.01		327,853.18	327,853.18
2350 Legal and Accounting Services		8,660.86	8,660.86		14,557.94	14,557.94
2420 Medical Services	499,566.83	4,925.20	504,492.03	533,977.92	5,264.46	539,242.38
2440 Nursing Services		452,456.09	452,456.09		452,758.99	452,758.99
2700 Student Transportation Services	2,057,250.18	812,494.48	2,869,744.66	1,441,070.51	569,139.26	2,010,209.77
Total	\$3,791,474.94	\$2,287,162.59	\$6,078,637.53	\$3,372,737.64	\$2,069,512.18	\$5,442,249.82

LEA : 123466403     Pottstown SD

Printed 1/4/2021 2:18:58 PM

(PRINCIPAL AMOUNTS ONLY)								
<u>GOVERNMENTAL FUNDS/ ACTIVITIES</u>	Short-Term Borrowing	General Obligation Bonds/Notes	Authority Building Obligations	Other Long-Term Debt	Other Post- Employment Benefits (OPEB)	Compensated Absences	Net Pension Liability	Total
1. Debt at Beginning of Fiscal Year		47,676,000.00			11,164,050.00	412,698.00	82,662,943.00	141,915,691.00
2. Additional Debt Incurred During Year		19,445,000.00			795,108.00	434,944.00	5,815,402.00	26,490,454.00
3. Retirements and Repayments		22,324,105.00			558,628.00	341,084.00	7,673,434.00	30,897,251.00
4. Debt at End of Fiscal Year		44,796,895.00			11,400,530.00	506,558.00	80,804,911.00	137,508,894.00
5. Accreted Interest at End Of Fiscal Year								
6. Total Debt and Accreted Interest		44,796,895.00			11,400,530.00	506,558.00	80,804,911.00	137,508,894.00
7. Current Portion P&I - Due within 1 year		3,443,703.25						3,443,703.25
8. Interest Paid during current fiscal year		1,243,461.25						1,243,461.25

(PRINCIPAL AMOUNTS ONLY)								
<u>PROPRIETARY FUNDS</u>	Short-Term Borrowing	General Obligation Bonds/Notes	Authority Building Obligations	Other Long-Term Debt	Other Post- Employment Benefits (OPEB)	Compensated Absences	Net Pension Liability	Total
1. Debt at Beginning of Fiscal Year					266,955.00	24,499.35	1,730,057.00	2,021,511.35
2. Additional Debt Incurred During Year					13,799.00	7,204.00	408,185.00	429,188.00
3. Retirements and Repayments					23,244.00	10,206.00	185,153.00	218,603.00
4. Debt at End of Fiscal Year					257,510.00	21,497.35	1,953,089.00	2,232,096.35
5. Accreted Interest at End Of Fiscal Year								
6. Total Debt and Accreted Interest					257,510.00	21,497.35	1,953,089.00	2,232,096.35
7. Current Portion P&I - Due within 1 year								
8. Interest Paid during current fiscal year								

LEA : 123466403     Pottstown SD

Printed 1/4/2021 2:18:58 PM

Total Principal and Interest Payments Made by Your School - All Funds

Function	Fund		Principal (910)	Principal (920)	Interest (830)	Total (Principal +Interest)	Misc Other Uses (990)
5110	10	General Fund	2,432,000.00		1,223,334.19	3,655,334.19	
5110	20	Special Revenue Funds					
5110	30	Capital Projects Funds					
5110	40	Debt Service Fund			36,376.56	36,376.56	
5110	90	Permanent Fund					
5120	10	General Fund					
5120	20	Special Revenue Funds					
5120	30	Capital Projects Funds					
5120	40	Debt Service Fund	19,892,105.18			19,892,105.18	
Total Debt Payments - Governmental Funds			\$22,324,105.18		\$1,259,710.75	\$23,583,815.93	

Function	Fund		Principal (910)	Principal (920)	Interest (830)	Total (Principal +Interest)
5110	50	Enterprise Fund				
5110	60	Internal Service Fund				
5120	50	Enterprise Fund				
5120	60	Internal Service Fund				
Total Debt Payments - Proprietary Funds						

LEA : 123466403     Pottstown SD

Printed 1/4/2021 2:18:58 PM

**Debt Details**  
**Governmental Funds/ Activities**

Debt Category	Debt Issue Date (MM/YYYY)	Principal Amounts Only				Current Portion Due Within One Year (Principal and Interest)	Interest Paid During Fiscal Year
		Debt at Beginning of Fiscal Year	Additions	Reductions / Repayments	Debt at End of Fiscal Year		
General Obligation Bonds/Notes – CIB	12/2020	9,630,000.00		9,630,000.00			234,939.00
General Obligation Bonds/Notes – CIB	06/2020		9,785,000.00		9,785,000.00	1,415,840.00	
General Obligation Bonds/Notes – CIB	11/2019		9,660,000.00		9,660,000.00	229,247.00	44,856.25
General Obligation Bonds/Notes – CIB	03/2019	7,040,000.00		20,000.00	7,020,000.00	242,923.75	223,279.00
General Obligation Bonds/Notes – CIB	12/2018	9,230,000.00		870,000.00	8,360,000.00	1,141,250.00	251,325.00
General Obligation Bonds/Notes – CIB	10/2017	9,995,000.00		9,991,105.00	3,895.00	3,895.00	207,008.00
General Obligation Bonds/Notes – CIB	12/2016	9,750,000.00		50,000.00	9,700,000.00	278,547.50	229,298.00
General Obligation Bonds/Notes – CIB	10/2013	1,415,000.00		1,415,000.00			39,985.00
General Obligation Bonds/Notes – CIB	10/2010	220,000.00		220,000.00			5,483.00
General Obligation Bonds/Notes – CIB	11/2002	396,000.00		128,000.00	268,000.00	132,000.00	7,288.00
Compensated Absences		412,698.00	434,944.00	341,084.00	506,558.00		
Other Post-Employment Benefits (OPEB)		11,164,050.00	795,108.00	558,628.00	11,400,530.00		
Net Pension Liability		82,662,943.00	5,815,402.00	7,673,434.00	80,804,911.00		
Totals for Debt Entered:		\$141,915,691.00	\$26,490,454.00	\$30,897,251.00	\$137,508,894.00	\$3,443,703.25	\$1,243,461.25

Debt Category	Debt Issue Date (MM/YYYY)	Principal Amounts Only				Current Portion Due Within One Year (Principal and Interest)	Interest Paid During Fiscal Year
		Debt at Beginning of Fiscal Year	Additions	Reductions / Repayments	Debt at End of Fiscal Year		
Compensated Absences		24,499.35	7,204.00	10,206.00	21,497.35		
Other Post-Employment Benefits (OPEB)		266,955.00	13,799.00	23,244.00	257,510.00		
Net Pension Liability		1,730,057.00	408,185.00	185,153.00	1,953,089.00		
Totals for Debt Entered:		\$2,021,511.35	\$429,188.00	\$218,603.00	\$2,232,096.35		

LEA : 123466403     Pottstown SD

Printed 1/4/2021 2:19:04 PM

General Fund (10)

Section 1: Tuition/Purchased Services as Reported within Expenditure Detail	Amount
Tuition Reported in General Fund Expenditures 1000-560	6,537,572.28
Purchased Services in General Fund Expenditures 1000-594 and 1000-597	1,724.99
<b>Section 1 Total</b>	<b>\$6,539,297.27</b>

Section 2: Tuition Paid to Institution Types During Fiscal Year	Tuition Paid For Nonspecial Education	Tuition Paid For Special Education	Total
1 1306 Institutions			
2 Institutionalized Children's Programs			
3 Juveniles Incarcerated in Adult Facilities			
4 Residential Treatment Facilities			
5 Other Local Education Agencies	259,348.48	(11,937.71)	247,410.77
6 Brick and Mortar Charter Schools	489,235.17	363,326.17	852,561.34
7 Cyber Charter Schools	1,214,120.87	1,255,167.83	2,469,288.70
8 Career and Technology Centers	94.26		94.26
9 Approved Private Schools		514,017.08	514,017.08
10 PA Chartered Schools for the Deaf and Blind			
11 Private Residential Rehabilitative Institutions		9,198.12	9,198.12
12 Juvenile Detention Centers			
13 Special Program Jointures			
14 Other Tuition Not Included Elsewhere In This Section	241,886.01	2,204,840.99	2,446,727.00
<b>Section 2 Total</b>	<b>\$2,204,684.79</b>	<b>\$4,334,612.48</b>	<b>\$6,539,297.27</b>

LEA : 123466403     Pottstown SD

Printed 1/4/2021 2:19:23 PM

Food Service / Cafeteria Operations Fund (51)

3000 Operation of Non-Instructional Services		Total
100	<u>Personnel Services – Salaries</u>	
100	Personnel Services – Salaries	554,238.33
Total Personnel Services – Salaries		\$554,238.33
200	<u>Personnel Services – Employee Benefits</u>	
210	Group Insurance – Contracted Provider	153,173.66
220	Social Security Contributions	39,931.71
230	PSERS Retirement Contributions	261,226.24
280	Other Post-Employment Benefits (OPEB)	(1,779.00)
Total Personnel Services – Employee Benefits		\$452,552.61
300	<u>Purchased Professional and Technical Services</u>	
329	Professional Educational Services – Other	5,364.45
350	Security / Safety Services	6,009.71
390	Other Purchased Professional and Technical Services	327.52
Total Purchased Professional and Technical Services		\$11,701.68
400	<u>Purchased Property Services</u>	
410	Cleaning Services	654.90
430	Repairs and Maintenance Services	1,189.81
490	Other Purchased Property Services	5,574.89
Total Purchased Property Services		\$7,419.60
500	<u>Other Purchased Services</u>	
530	Communications	153.74
580	Travel	247.67
Total Other Purchased Services		\$401.41
600	<u>Supplies</u>	
610	General Supplies	88,105.46
630	Food	1,007,673.21
Total Supplies		\$1,095,778.67
700	<u>Property</u>	
740	Depreciation	8,090.00
Total Property		\$8,090.00
800	<u>Other Objects</u>	
810	Dues and Fees	748.50
890	Miscellaneous Expenditures	10,565.47
Total Other Objects		\$11,313.97
Total 3000 Operation of Non-Instructional Services		\$2,141,496.27



LEA : 123466403     Pottstown SD

Printed 1/4/2021 2:19:23 PM

Food Service / Cafeteria Operations Fund (51)

3100 Food Services	<u>Elementary</u>	<u>Secondary</u>	<u>Federal</u>	<u>Total</u>
100 <u>Personnel Services – Salaries</u>				
100 Personnel Services – Salaries				554,238.33
Total Personnel Services – Salaries				\$554,238.33
200 <u>Personnel Services – Employee Benefits</u>				
210 Group Insurance – Contracted Provider				153,173.66
220 Social Security Contributions				39,931.71
230 PSERS Retirement Contributions				261,226.24
280 Other Post-Employment Benefits (OPEB)				(1,779.00)
Total Personnel Services – Employee Benefits				\$452,552.61
300 <u>Purchased Professional and Technical Services</u>				
329 Professional Educational Services – Other				5,364.45
350 Security / Safety Services				6,009.71
390 Other Purchased Professional and Technical Services				327.52
Total Purchased Professional and Technical Services				\$11,701.68
400 <u>Purchased Property Services</u>				
410 Cleaning Services				654.90
430 Repairs and Maintenance Services				1,189.81
490 Other Purchased Property Services				5,574.89
Total Purchased Property Services				\$7,419.60
500 <u>Other Purchased Services</u>				
530 Communications				153.74
580 Travel				247.67
Total Other Purchased Services				\$401.41
600 <u>Supplies</u>				
610 General Supplies				88,105.46
630 Food				1,007,673.21
Total Supplies				\$1,095,778.67
700 <u>Property</u>				
740 Depreciation				8,090.00
Total Property				\$8,090.00
800 <u>Other Objects</u>				
810 Dues and Fees				748.50
890 Miscellaneous Expenditures				10,565.47
Total Other Objects				\$11,313.97
Total 3100 Food Services				\$2,141,496.27

LEA : 123466403     Pottstown SD

Printed 1/4/2021 2:19:29 PM

Food Service / Cafeteria Operations Fund (51)

5000 Other Expenditures and Financing Uses

Total

900 Other Uses of Funds

939 Other Fund Transfers

82,449.88

Total Other Uses of Funds

\$82,449.88

Total 5000 Other Expenditures and Financing Uses

\$82,449.88

LEA : 123466403     Pottstown SD

Printed 1/4/2021 2:19:29 PM

Food Service / Cafeteria Operations Fund (51)

5200 Interfund Transfers – Out	<u>Elementary</u>	<u>Secondary</u>	<u>Federal</u>	<u>Total</u>
900 <u>Other Uses of Funds</u>				
939 Other Fund Transfers				82,449.88
Total Other Uses of Funds				\$82,449.88
Total 5200 Interfund Transfers – Out				\$82,449.88

LEA : 123466403     Pottstown SD

Printed 1/4/2021 2:19:29 PM

Food Service / Cafeteria Operations Fund (51)

5210 General Fund Transfers	<u>Elementary</u>	<u>Secondary</u>	<u>Federal</u>	<u>Total</u>
900 <u>Other Uses of Funds</u>				
939 Other Fund Transfers				82,449.88
Total Other Uses of Funds				\$82,449.88
Total 5210 General Fund Transfers				\$82,449.88

LEA : 123466403     Pottstown SD

Printed 1/4/2021 2:19:18 PM

Internal Service Fund (60)

2000 Support Services

Total

200 Personnel Services – Employee Benefits

210 Group Insurance – Contracted Provider	5,695,699.00
---	--------------

<b>Total Personnel Services – Employee Benefits</b>	<b>\$5,695,699.00</b>
---	-----------------------

800 Other Objects

810 Dues and Fees	240,441.00
-------------------	------------

<b>Total Other Objects</b>	<b>\$240,441.00</b>
----------------------------	---------------------

<b>Total 2000 Support Services</b>	<b>\$5,936,140.00</b>
------------------------------------	-----------------------

LEA : 123466403     Pottstown SD

Printed 1/4/2021 2:19:18 PM

Internal Service Fund (60)

2100 Support Services – Students

Elementary                      Secondary                      Federal                      Total

200 Personnel Services – Employee Benefits

210 Group Insurance – Contracted Provider 5,695,699.00

**Total Personnel Services – Employee Benefits \$5,695,699.00**

800 Other Objects

810 Dues and Fees 240,441.00

**Total Other Objects \$240,441.00**

**Total 2100 Support Services – Students \$5,936,140.00**

LEA : 123466403     Pottstown SD

Printed 1/4/2021 2:19:18 PM

Internal Service Fund (60)

2110 Supervision of Student Services	<u>Elementary</u>	<u>Secondary</u>	<u>Federal</u>	<u>Total</u>
200 <u>Personnel Services – Employee Benefits</u>				
210 Group Insurance – Contracted Provider				5,695,699.00
Total Personnel Services – Employee Benefits				\$5,695,699.00
800 <u>Other Objects</u>				
810 Dues and Fees				240,441.00
Total Other Objects				\$240,441.00
Total 2110 Supervision of Student Services				\$5,936,140.00

LEA : 123466403     Pottstown SD

Printed 1/4/2021 2:19:18 PM

Internal Service Fund (60)

2111 Supervision of Student Services – Head of Component

<u>Elementary</u>	<u>Secondary</u>	<u>Federal</u>	<u>Total</u>
-------------------	------------------	----------------	--------------

200 Personnel Services – Employee Benefits

210 Group Insurance – Contracted Provider			5,695,699.00
---	--	--	--------------

<b>Total Personnel Services – Employee Benefits</b>			<b>\$5,695,699.00</b>
---	--	--	-----------------------

800 Other Objects

810 Dues and Fees			240,441.00
-------------------	--	--	------------

<b>Total Other Objects</b>			<b>\$240,441.00</b>
----------------------------	--	--	---------------------

<b>Total 2111 Supervision of Student Services – Head of Component</b>			<b>\$5,936,140.00</b>
---	--	--	-----------------------



	<u>Food Service(51)</u>	<u>Child Care Operations(52)</u>	<u>Other Enterprise(58)</u>	<u>Internal Service(60)</u>	<u>Total</u>
<b>2000 <u>Support Services</u></b>					
2100 Support Services - Students				5,936,140.00	5,936,140.00
<b>Total Support Services</b>				<b>\$5,936,140.00</b>	<b>\$5,936,140.00</b>
<b>3000 <u>Operation of Non-Instructional Services</u></b>					
3100 Food Services	2,141,496.27				2,141,496.27
<b>Total Operation of Non-Instructional Services</b>	<b>\$2,141,496.27</b>				<b>\$2,141,496.27</b>
<b>5000 <u>Other Expenditures and Financing Uses</u></b>					
5200 Interfund Transfers - Out	82,449.88				82,449.88
<b>Total Other Expenditures and Financing Uses</b>	<b>\$82,449.88</b>				<b>\$82,449.88</b>
<b>TOTAL ACTUAL EXPENDITURES &amp; OTHER FINANCING USES</b>	<b>\$2,223,946.15</b>			<b>\$5,936,140.00</b>	<b>\$8,160,086.15</b>

LEA : 123466403 Pottstown SD

Printed 1/4/2021 2:19:49 PM

Fund	School	School Number	Local Personnel	Local Nonpersonnel	State Personnel	State Nonpersonnel	Federal Personnel	Federal Nonpersonnel	Total	Explanation
10										
	Barth El Sch	3345	1,820,723.01	394,360.44	1,661,520.17	359,877.82	495,923.26	141,946.23	4,874,350.93	
	Franklin El Sch	3339	1,748,739.12	399,716.83	1,595,830.51	364,765.85	476,145.05	92,201.51	4,677,398.87	
	Lincoln El Sch	3341	1,835,006.47	384,421.06	1,674,554.69	350,807.53	452,486.28	138,792.89	4,836,068.92	
	Pottstown MS	3346	5,514,375.58	1,282,765.05	5,032,202.16	1,170,600.91	673,659.09	348,759.08	14,022,361.87	
	Pottstown SHS	3348	5,447,455.96	1,373,489.99	4,971,133.95	1,253,392.91	435,732.27	237,315.23	13,718,520.31	
	Rupert El Sch	3342	1,760,644.97	456,739.92	1,606,695.32	416,802.88	440,454.84	102,161.09	4,783,499.02	
Total			18,126,945.11	4,291,493.29	16,541,936.80	3,916,247.90	2,974,400.79	1,061,176.03	46,912,199.92	